

POPULAR ANNUAL FINANCIAL REPORT for THE COUNTY of GREENVILLE, SOUTH CAROLINA



Fiscal year ended June 30, 2016





Letter to the citizens of the
County of Greenville..... 4

Greenville County
Government 6

About Greenville County..... 8

Summary of Financial
Information..... 10

Functions of Government 12

Greenville County is a pet-friendly community that enthusiastically supports special events like the very popular Waggin at the Waterpark. Greenville County Animal Care, the state’s largest shelter accepting more than 17,000 animals annually, is dedicated to becoming a “no kill” shelter and has taken dramatic steps to continue to increase save rates and reduce intake.

Letter to the Citizens

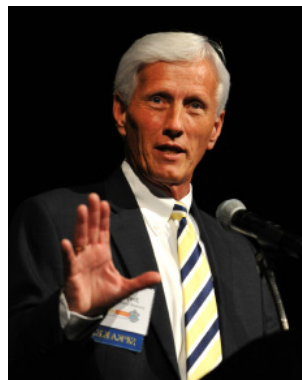
Dear Citizens,

At Greenville County we are honored to be "...at your service." Our mission is to provide quality public service to all citizens of the County. Proper budgeting and financial management allows Greenville County to achieve and exceed this goal while being good stewards of taxpayer dollars.

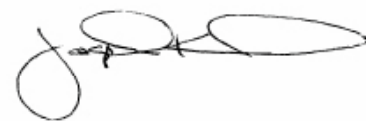
Greenville County government takes great pride in our transparency and accountability. That is why I am pleased to present the Popular Annual Financial Report (PAFR). The purpose of the PAFR is to share our financial story with citizens in an easy-to-read format.

The County also prepares a Comprehensive Annual Financial Report (CAFR) which provides greater detail of the County's finances. We invite you to visit our website www.greenvillecounty.org to view the CAFR, Operating and Capital Budget and other financial information provided to citizens of Greenville County.

Greenville County continues to meet the highest standards of financial reporting and I am honored to share this information with you – the citizens we proudly serve.



Sincerely,



Joseph Kernell
Greenville County Administrator

Major Accomplishment:

For the sixteenth consecutive year, Greenville County has had its prestigious AAA bond rating reaffirmed by all three ratings agencies. The ratings confirm that the County's bonds are of the highest credit quality, provide financial security and translate into substantial savings for tax payers.



Sports Tourism continues to have a significant, positive economic impact on Greenville County. Visitors from across the Southeast participating in baseball, soccer, swimming, lacrosse, and other sports hosted at County facilities contribute more than \$4 million annually into the local economy.

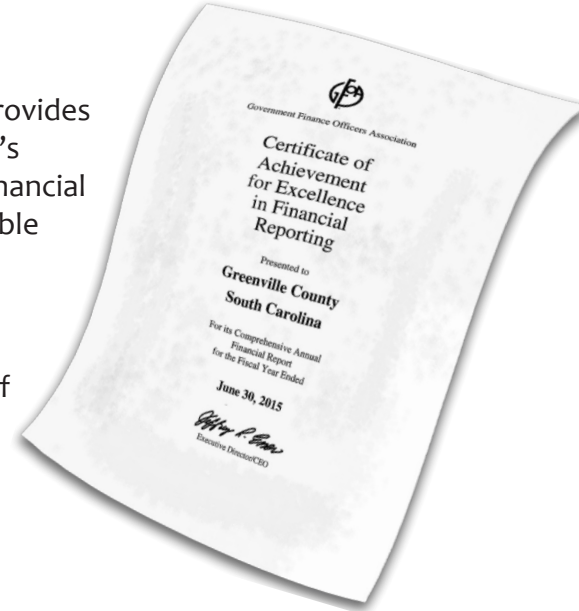


Greenville County Government

Greenville County provides a full range of government services, including law enforcement, judicial system, health services, social services, emergency medical transport, infrastructure construction and maintenance, animal control, comprehensive planning, and more.

The County is committed to open, accountable government, and provides information at the highest possible level of transparency. The County's award-winning website now features easily accessible, front page "Financial Online Accountability" and "Find Your Representative" tools that enable citizens to find the most up to date information on who their elected leaders are and what they are doing.

To further provide citizens with accessible and convenient means of communication, Greenville County provides up-to-date information and opportunity for an open community forum through various social media platforms. Messages shared through County social media platforms are able to reach more than 50,000 community members each day.



www.GreenvilleCounty.org

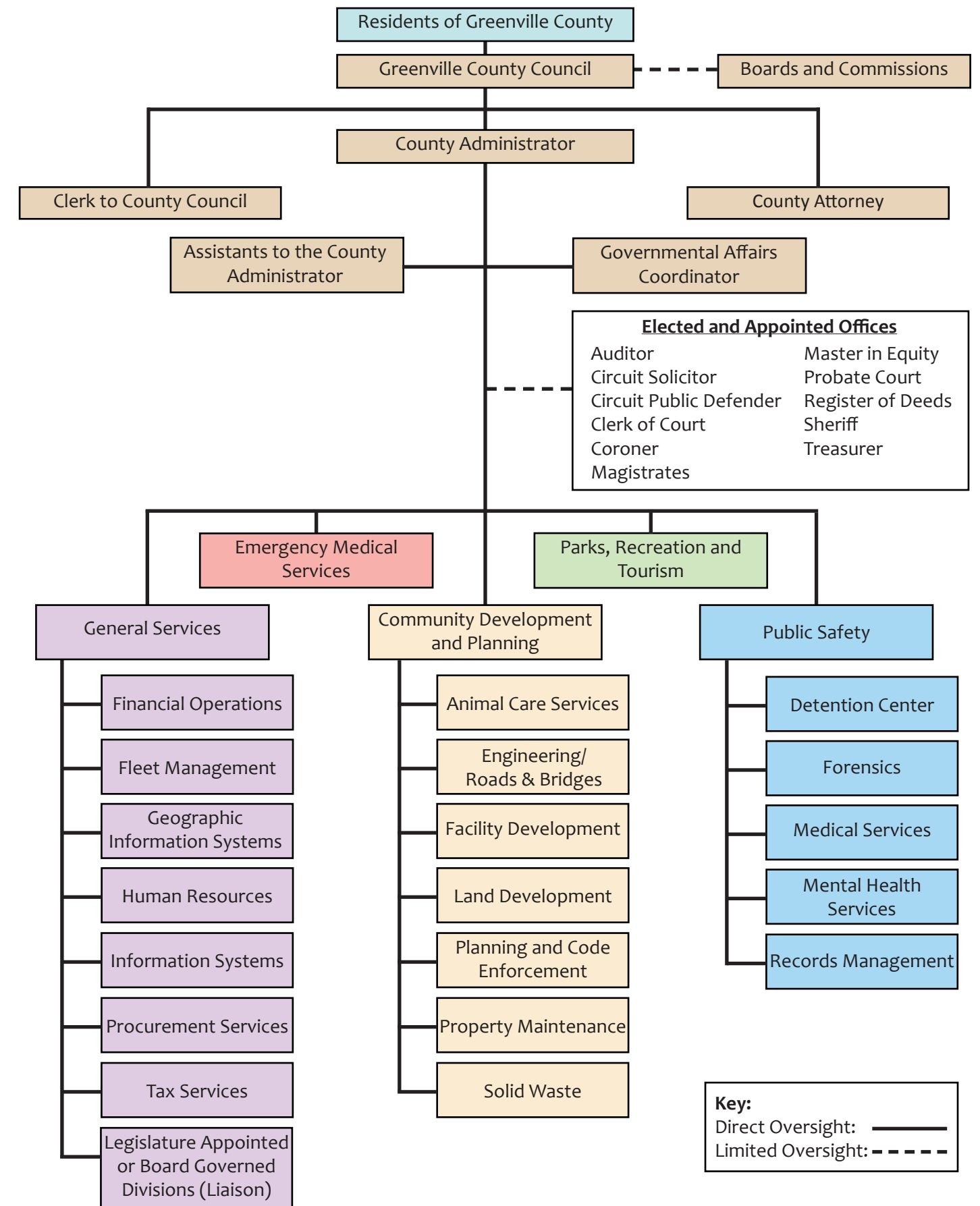
Animal Control (864) 467-7595	Homestead Exemption (864) 467-7300	Planning & Code Enforcement (864) 467-7090	Sheriff (864) 467-5100
Business Registration (864) 467-7300	Hospitality Tax Payments (864) 467-7567	Probate Court (864) 467-7170	Recycling (864) 243-9672
Clerk of Court (864) 467-8551	Human Relations (864) 467-7095	Procurement (864) 467-7200	Veteran's Affairs (864) 467-7230
Detention Center (864) 467-2330	Legal Residence Est. (864) 467-7300	Property Tax Payments (864) 467-7050	Voter Registration (864) 467-7250
Economic Development (864) 235-2008	Mobile Home Permits (864) 467-7300	Real Property Values (864) 467-7300	
EMS (864) 467-7005	Parks, Recreation & Tourism (864) 288-6470	Redevelopment Authority (864) 242-9801	
Engineering (864) 467-7016	Permits (864) 467-7060	Register of Deeds (864) 467-7240	

Greenville County Council

The 12-member, single district, Greenville County Council is the legislative and policy making body for the government. They appoint the county administrator, who is responsible for executing day-to-day operations.

(864) 467-7115

County of Greenville Organizational Chart



Key:
 Direct Oversight: ———
 Limited Oversight: - - - - -

about Greenville County

With more than 451,000 residents, Greenville County is South Carolina's most populous county and continues to grow at an average rate of 2.1 percent per year. Home to thriving, nationally ranked urban areas like Downtown Greenville, the County also features numerous communities rich with character and tradition, all surrounded by the incredible scenic beauty of the rolling foothills of the Blue Ridge Mountains. Considered the "economic engine of South Carolina," the County is home to more than 650 manufacturers and proudly produces an unemployment rate lower than national and state averages. The County features a low cost of living, mild climate, outstanding health care options, award winning schools and universities, easy access via land or air, and a diverse population that enjoys an unrivaled quality of life.



The **Greenville Technical College Center for Manufacturing Innovation (CMI)** provides an engaging environment that gives students the tools needed to succeed in advanced manufacturing careers and employers the skilled workforce required for commercial success. Located on Greenville's Millennium Campus, CMI offers an innovative curriculum featuring integrated project-based learning experiences on real-world projects.



Greenville County's new North Greenville Summary Court consolidates services in a modern, professional facility that provides citizens convenience and easy access. Located on the property of the former Travelers Rest High School, the court is near the very popular GHS Swamp Rabbit Trail and shares parking facilities with other recreational options, including the area's local farmers market.

Summary of Financial Information

The County's Comprehensive Annual Financial Report (CAFR) is presented in accordance with generally accepted accounting principles (GAAP). The presentation of this report differs from GAAP because the data presented is only for the primary government which includes all Greenville County governmental functions. The Greenville County Redevelopment Authority and the Greenville County Library System are excluded.

Governmental activities of Greenville County include the general government, public safety, highways and streets, economic development, judicial services, health and welfare, and culture and recreation. Governmental activities generally are financed through taxes and intergovernmental revenues.

Business-type activities include solid waste disposal, storm water quality and control, and the parking facility. These activities are intended to recover all or a significant portion of their costs through user fees and charges.

Balance Sheet

More formally referred to as the Statement of Net Position (assets minus liabilities), the balance sheet reflects Greenville County's strong financial position.

2016 Balance Sheet

ASSETS	Governmental Activities		Business-type Activities	
	2016	2015	2016	2015
Current and other assets	\$132,629,806	\$138,947,842	\$17,446,560	\$ 17,372,529
Capital assets	508,890,232	507,682,071	25,877,972	24,851,078
Deferred outflow - unamortized amount on refundings	6,140,105	6,143,546		
Deferred outflow - pensions	17,885,326	16,062,164	522,094	441,300
Total assets & deferred outflows of resources	665,545,469	668,835,623	43,846,626	42,664,907
LIABILITIES				
Long-term liabilities	343,948,106	332,780,957	11,121,931	11,052,227
Other liabilities	17,576,769	14,607,863	773,567	432,329
Deferred inflow - pensions	216,591	15,726,937	6,050	432,090
Total liabilities & deferred inflows of resources	361,741,466	363,115,757	11,901,548	11,916,646
Total net position	\$303,804,003	\$305,719,866	\$31,945,078	\$30,748,261

Explanations Of Major Fluctuations:

The decrease in net position for the governmental activities is primarily due to increases in other liabilities and net pension liability. An increase in capital assets contributed to the increase in net position for the business type activities.



The first public-private partnership of its kind in South Carolina, Greenville County's Twin Chimneys Landfill is partnering with Atlas Organics to compost food waste and turn it in to valuable materials for local and regional farmers and landscapers.

Functions of Government

Income Statement

The County's income statement, referred to as the Statement of Activities, reports all financial activity during the fiscal year.

	Governmental Activities		Business-type Activities	
	2016	2015	2016	2015
REVENUES				
Property taxes	\$112,255,919	\$107,316,645	\$3,848,588	\$3,624,509
Charges for services	49,702,298	43,600,095	14,647,795	14,033,869
Grants and contributions	18,740,962	23,114,268	-	-
Intergovernmental	29,522,948	28,436,913	-	-
Hospitality tax	8,208,598	7,728,443	-	-
Other revenue	8,944,861	9,332,724	173,024	92,930
Donald land held for resale	5,931,604	-	-	-
Total revenues	233,307,190	219,529,088	18,669,407	17,751,308
EXPENSES				
Administration services	2,624,799	2,546,428	-	-
General services	19,027,592	16,539,097	-	-
Parks, recreation and tourism	15,761,874	15,982,659	-	-
Emergency Medical Services	19,221,506	17,907,654	-	-
Public safety	32,078,269	31,730,942	-	-
Judicial services	24,874,958	23,822,094	-	-
Community development and planning	55,083,718	41,236,324	-	-
Fiscal services	2,851,492	2,801,313	-	-
Law enforcement services	48,991,466	47,333,376	-	-
Boards, commissions & others	9,629,052	9,722,839	-	-
Interest and fiscal charges	5,325,377	5,681,855	-	-
Solid waste	-	-	9,146,259	8,038,341
Storm water	-	-	7,959,604	8,097,473
Parking facility	-	-	119,677	128,395
Total expenses	235,470,103	215,304,581	17,225,540	16,264,209
Increase (decrease) in net position	(2,162,913)	4,224,507	1,443,867	1,487,099
Transfers in/out	247,050	-	(247,050)	-
CHANGE IN NET POSITION				
	(1,915,863)	4,224,507	1,196,817	1,487,099
Net Position - Beginning	305,719,866	301,495,359	30,748,261	29,261,162
Net position - Ending	\$303,804,003	\$305,719,866	\$31,945,078	\$30,748,261

Explanations of Major Fluctuations:

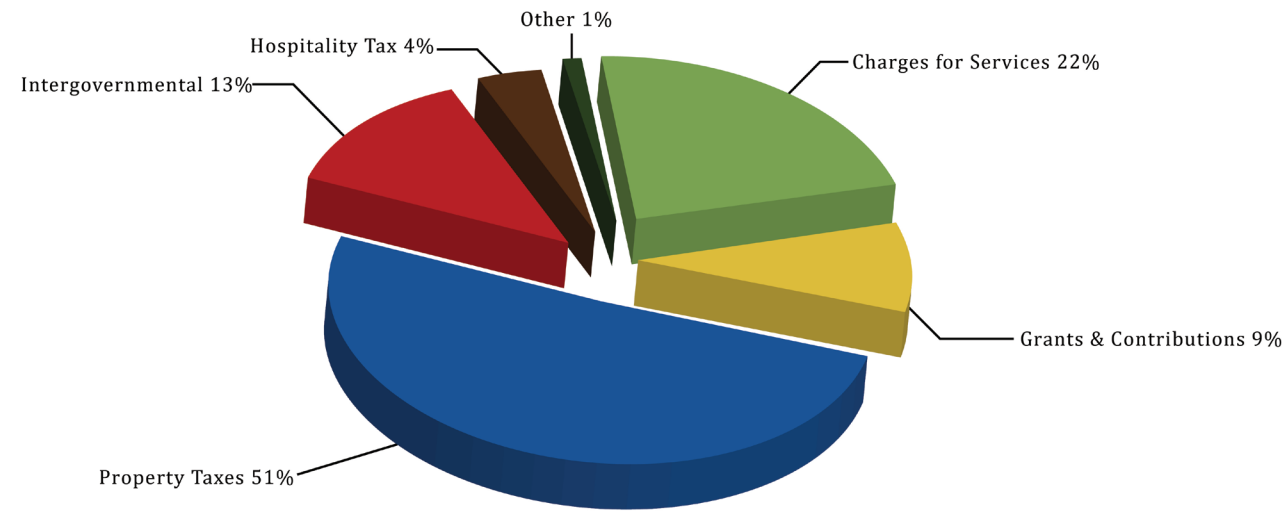
The overall decrease in net position of governmental activities is mostly due to a decrease in operating and capital grants and contributions and increases in salaries and wages and related benefits. The overall increase in the net position of the business-type activities is mainly due to an increase in charges for services and interest income, as well as, a slight increase in property tax revenues.



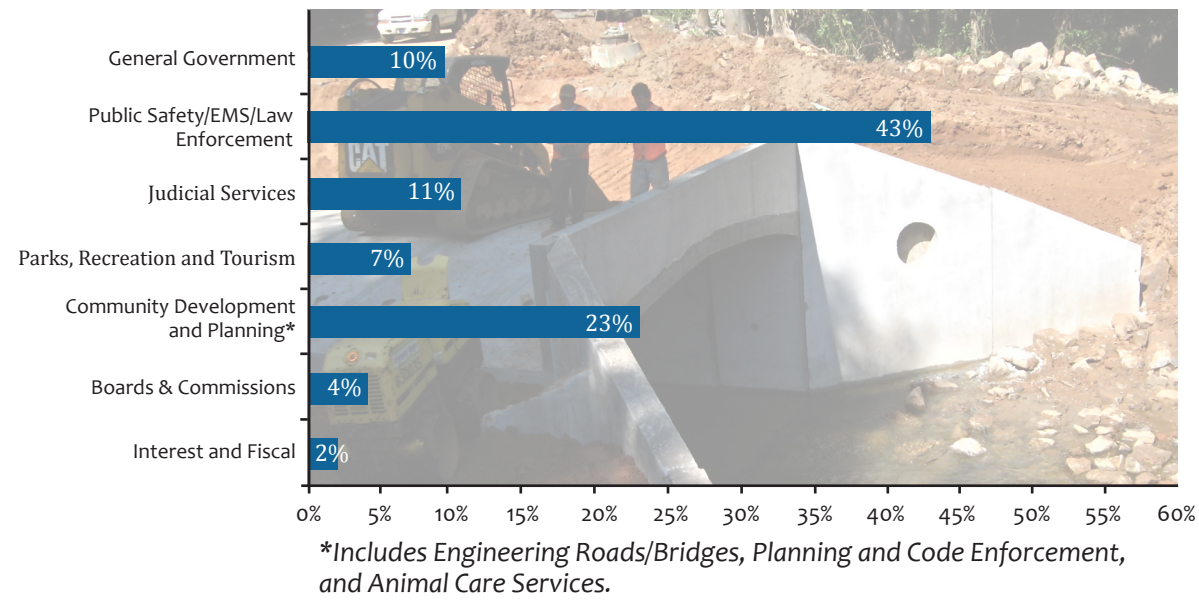
The Greenville County Juvenile Detention Facility is one of three authorized county juvenile detention centers in the state. This 47 bed facility houses juveniles between the ages of 11 to 16 who have been court ordered to be held pending adjudication. The building also hosts the Greenville County Juvenile Assessment Center, which is a result of a unique and collaborative effort between Greenville County and multiple state departments to better address the needs of at-risk youth.

Functions of Government continued

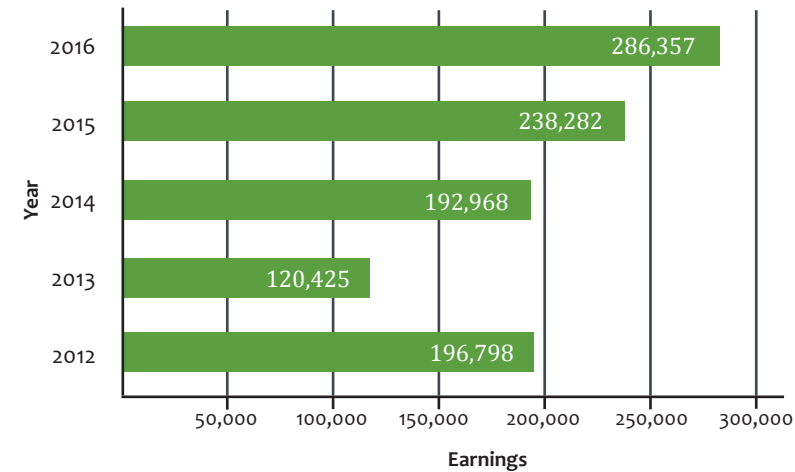
Revenue Sources – Governmental Activities



Expenses – Governmental Activities



Surplus Auction Earnings



Greenville County's Annual Surplus Auction features quality items used or obtained by Greenville County that are made available to the highest bidder at this annual one-day event.



More than 150,000 yearly guests at Greenville County Rec's Pavilion now have an even better surface for skating. The County invested \$1.6 million in a new state-of-the-art ice system that created a smooth, professional, sustainable surface for the County's ice enthusiast.



Financial Operations Division

301 University Ridge, Suite 200
Greenville, South Carolina 29601
Phone: (864) 467-7020