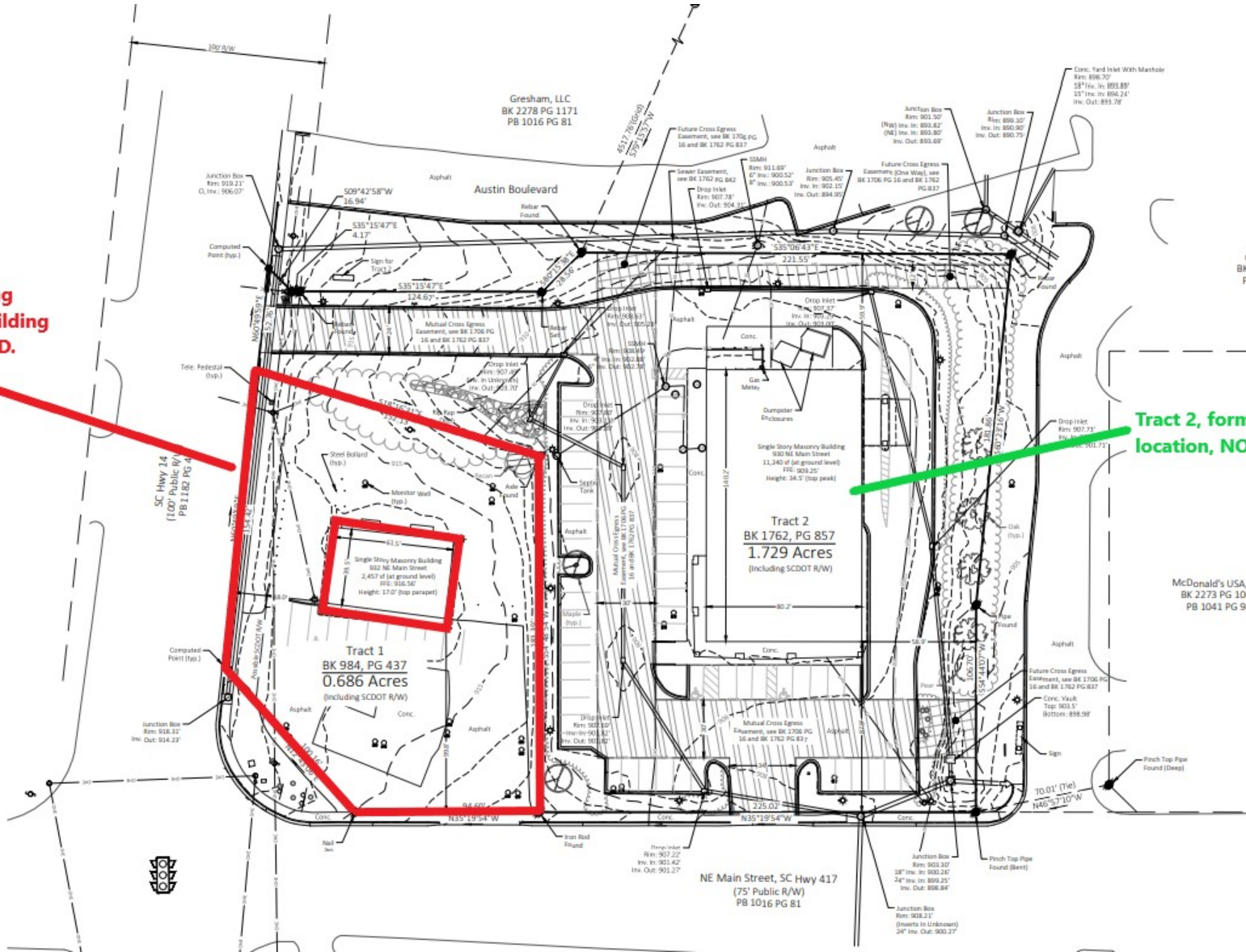


**Abandoned Building
and abandoned building
area outlined in RED.**



**Tract 2, former Rite-Aid
location, NOT ABANDONED.**

McDonald's USA, L
BK 2273 PG 106
PB 1041 PG 98

Gresham, LLC
BK 2278 PG 1171
PB 1016 PG 81

NE Main Street, SC Hwy 417
(75' Public R/W)
PB 1016 PG 81

