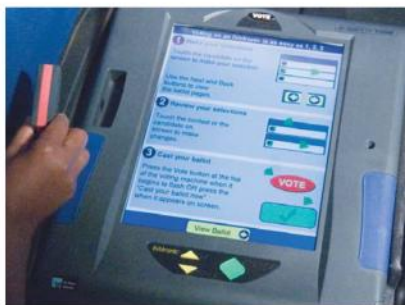


1-2-3Vote!

Using South Carolina's Electronic Touch Screen Voting System

1 Activate Ballot

A pollworker will activate your ballot by inserting a Personal Electronic Ballot (PEB) device into the appropriate slot.



2 Select Your Candidate

To select your candidates, touch the box next to the candidates' names. The touch screen system prevents you from voting for more candidates for a single office than is allowed.



Touch **'NEXT'** to proceed through the ballot.

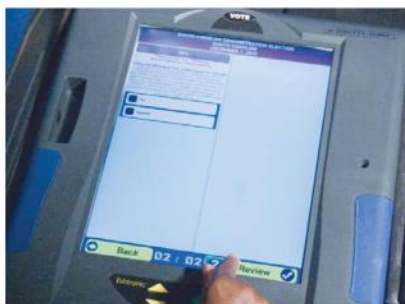


Touch **'BACK'** to go to a previous page.

3 Review Your Ballot

After completing the last ballot page, touch **'REVIEW'** and read over your selections carefully.

To **CHANGE** a selection, touch the box next to your original candidate to deselect, and then touch the box next to your new selection.



Vote!

You must press one of two buttons to record your vote.

1. Press **EITHER** the flashing **RED VOTE** button at the top of the machine, or the flashing **GREEN CHECK** box on the screen.
2. Press **CONFIRM** to officially record your vote.



Thank You For Voting

This completes the voting process.

