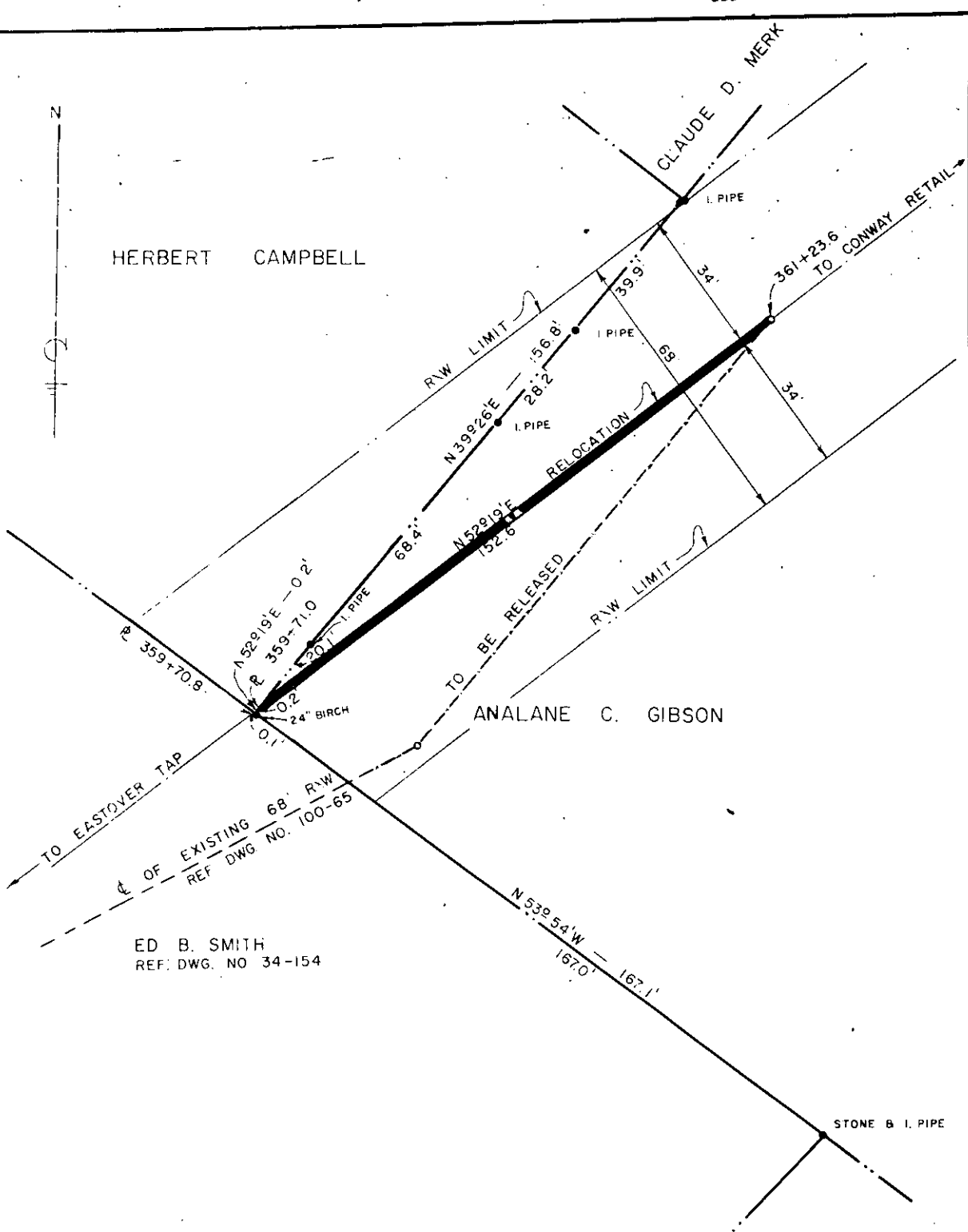




HERBERT CAMPBELL

CLAUDE D. MERK



R. 359+70.8

N 52919'E - 0.2'  
P. 359+71.0  
20.7' I. PIPE  
0.2'  
24" BIRCH  
0.1'

N 39226'E  
156.8'  
I. PIPE  
28.2'

N 52919'E  
152.5'  
I. PIPE  
68.4'

N 39226'E  
39.9'  
I. PIPE  
34'

361+23.6  
TO CONWAY RETAIL  
34'

ANALANE C. GIBSON

TO BE RELEASED  
OF EXISTING 68' RAW  
REF DWG. NO. 100-65

ED B. SMITH  
REF DWG. NO 34-154

N 53254'W - 167.1'  
167.0'

STONE & I. PIPE

DUKE POWER COMPANY  
 RELOCATION OF  
 OAKVALE-E. GREENVILLE  
 TRANSMISSION LINE  
 CROSSING PROPERTIES OF  
 HERBERT CAMPBELL  
 AND  
 ANALANE C. GIBSON  
 BUTLER TOWNSHIP  
 GREENVILLE COUNTY, S.C.

19061

SCALE: 1" = 30'  
 BOOK NO 849  
 DECEMBER 27, 1966  
 FILE NO. 34-155

ORR - 9  
 See 509  
 Recorded February 1st, 1967 at 10:45 A.M. # 19061