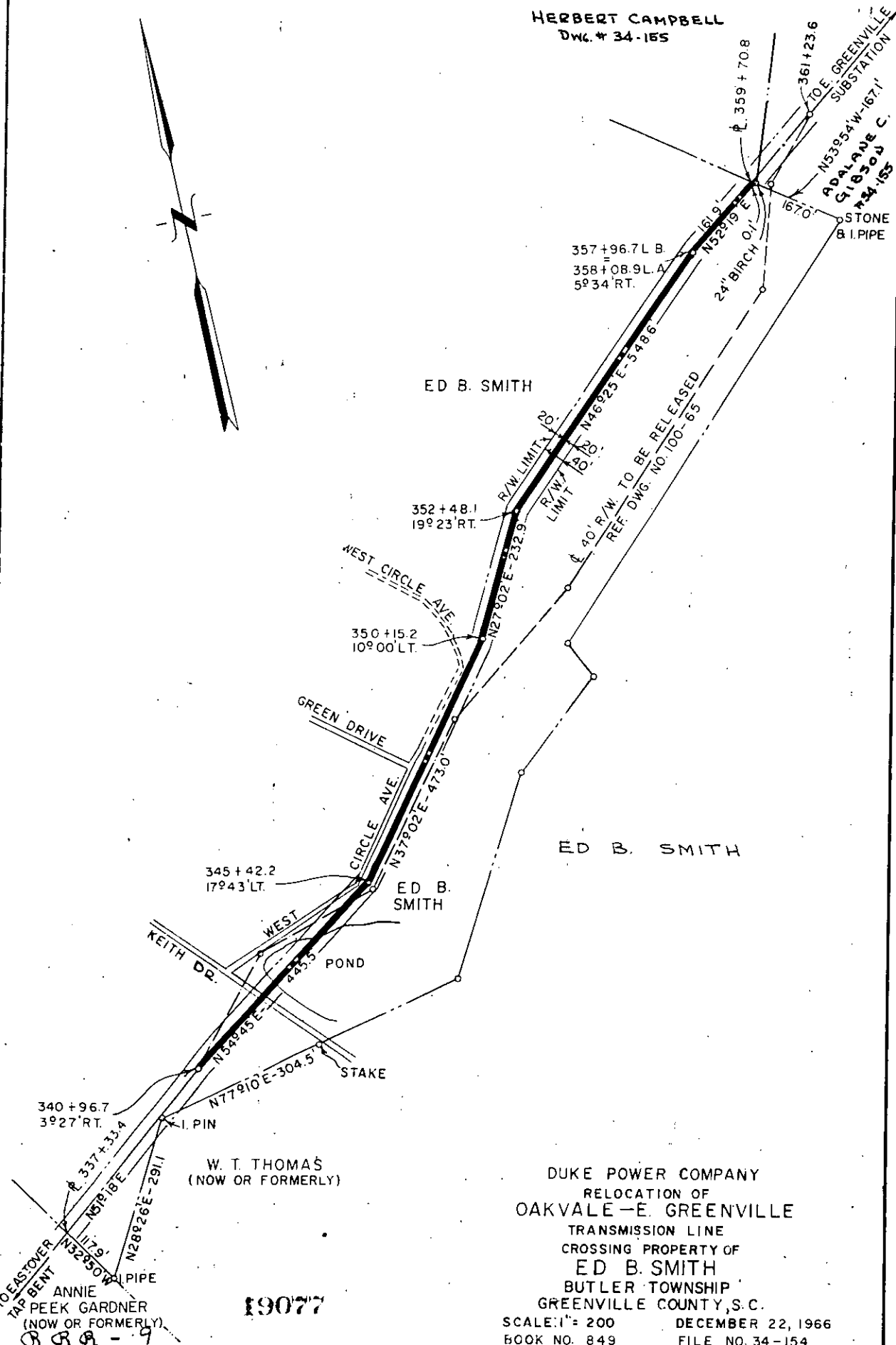


HERBERT CAMPBELL  
DWG. # 34-185



DUKE POWER COMPANY  
 RELOCATION OF  
 OAKVALE - E. GREENVILLE  
 TRANSMISSION LINE  
 CROSSING PROPERTY OF  
 ED B. SMITH  
 BUTLER TOWNSHIP  
 GREENVILLE COUNTY, S.C.

SCALE: 1" = 200  
 BOOK NO. 849  
 DECEMBER 22, 1966  
 FILE NO. 34-154

19077

TO EASTOVER  
 TAP BEAT  
 ANNE  
 PEEK GARDNER  
 (NOW OR FORMERLY)  
 P.P.A. - 9

See 504 Recorded February 5th., 1967. At 10:45 A.M. # 19077