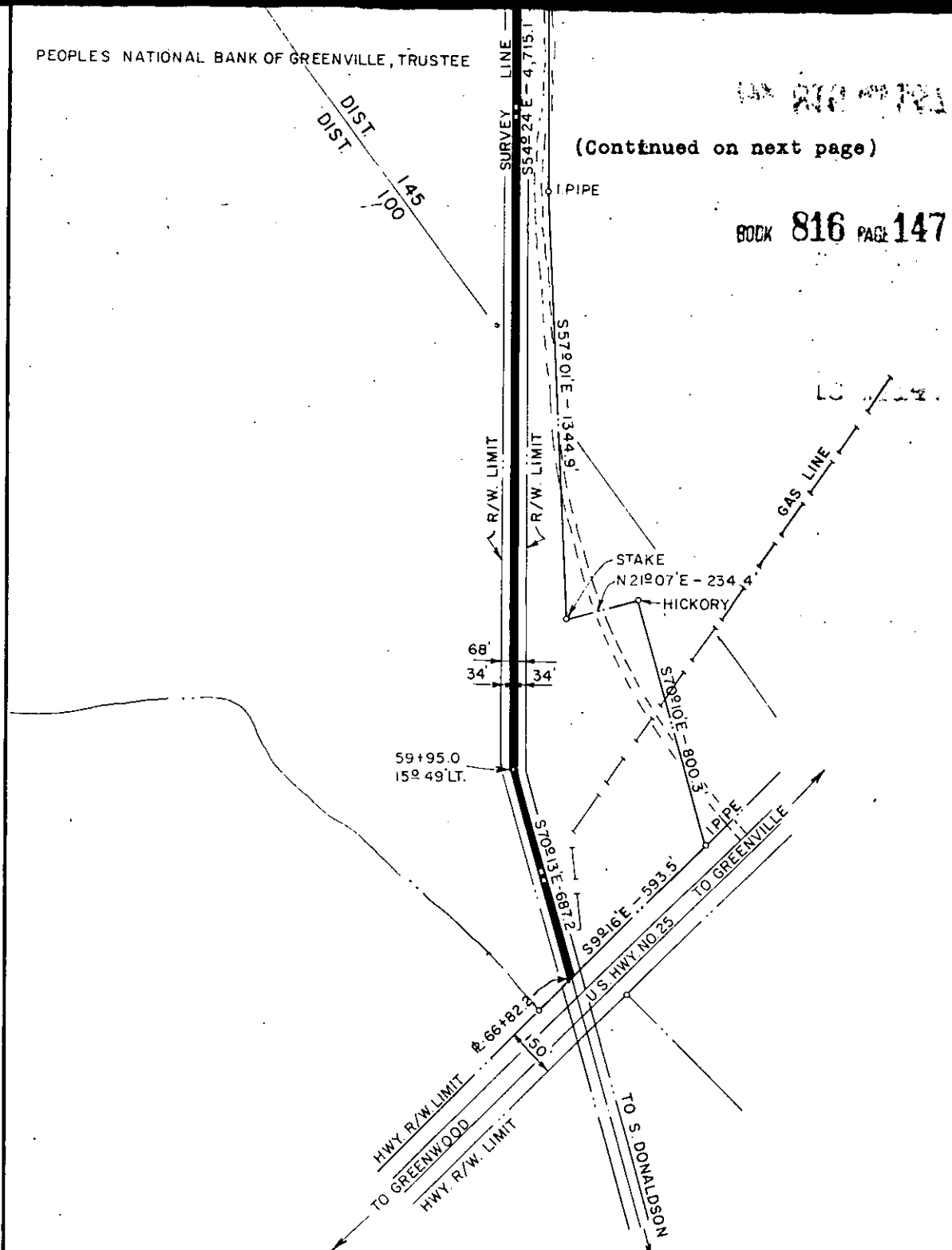


PEOPLES NATIONAL BANK OF GREENVILLE, TRUSTEE

100 816 147

(Continued on next page)

BOOK 816 PAGE 147



MATTIE D. STONE
REF: DWG. No. 34-15

DUKE POWER COMPANY
MOONVILLE TAP-MOONVILLE RETAIL
TRANSMISSION LINE
CROSSING PROPERTY OF

PEOPLES NATIONAL BANK OF GREENVILLE, TRUSTEE
NEAR GREENVILLE, S.C.
GANTT TOWNSHIP
GREENVILLE COUNTY

SCALE: 1" = 400'
BOOK NO. 899

SEPTEMBER 27, 1966
FILE NO. 53-173

Recorded March 24th., 1967 At 4:49 P.M. # 22938