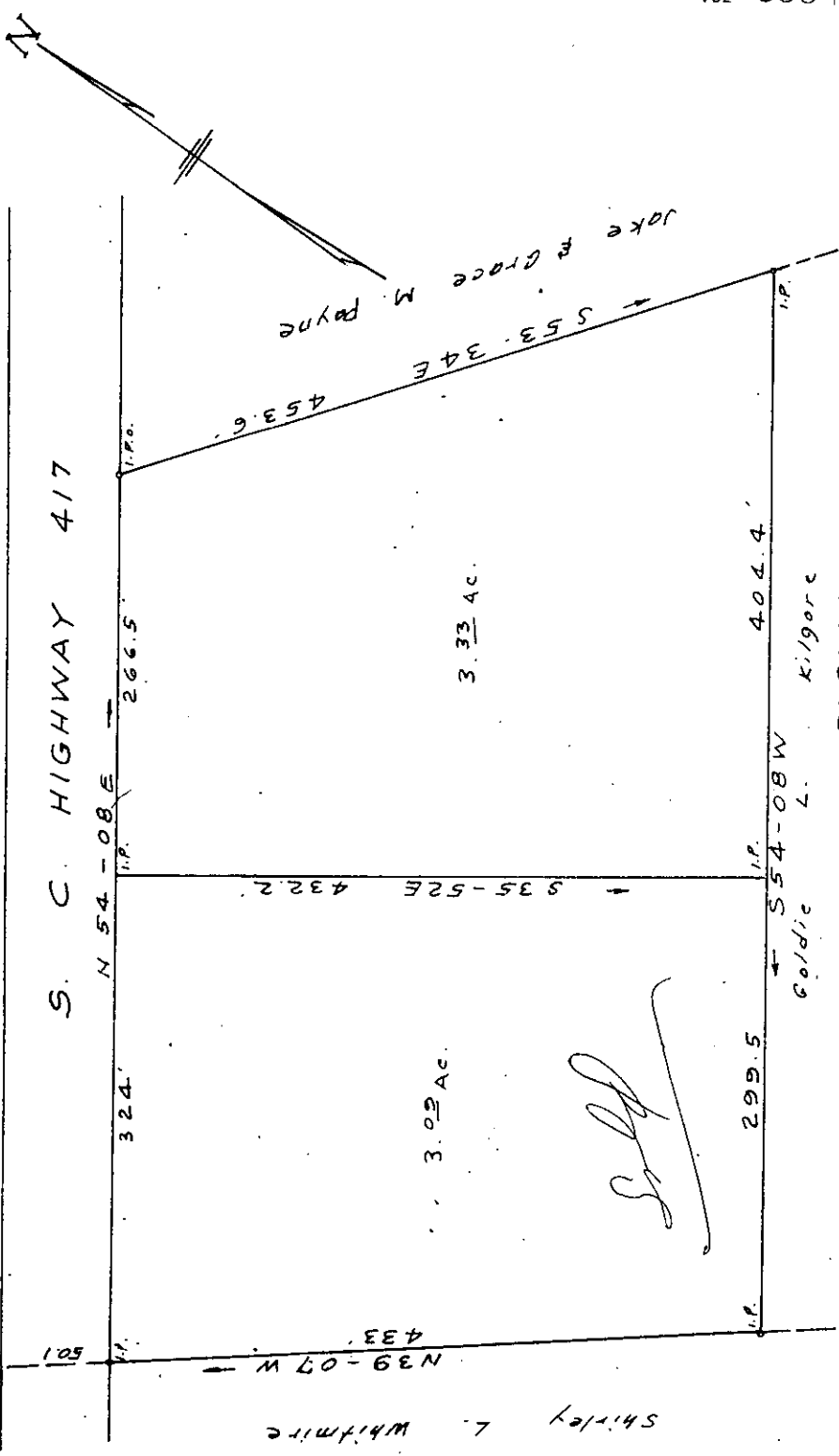


CH# 281. ~~281~~
CH# 295. ~~295~~
5/21/71
Bent



S. C. HIGHWAY 417

N 54-08 E

17.70

266.5

324

453.6

S 53-34 E

S 35-52 E

432.2

433

N 39-07 W

501

142.4

3.33 AC.

3.02 AC.

404.4

S 54-08 W

299.5

17.7

17.7

Goldie L. Kilgore

PROPERTY OF
GOLDIE L. KILGORE

NEAR SIMPSONVILLE S.C.

SCALE 1" = 100'

APR. 20, 1971

C. O. Riddle - Reg. L.S. 1347

Plat and Deed Recorded July 26, 1972 at 10:59 A. M., #2425

EB A-71