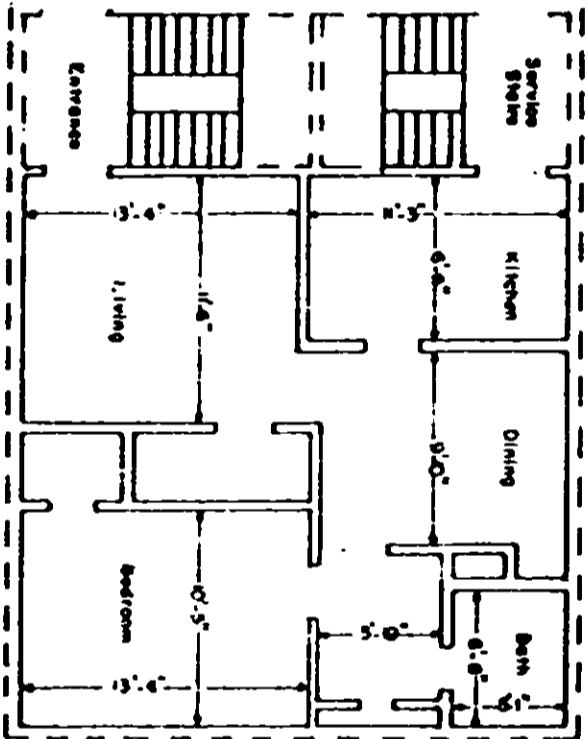


Boundary of unit ———  
 Common Elements - - - -  
 Stairs - Limited Common Elements [hatched box]



TYPICAL UNIT SCHEMATIC OF  
 FLOOR PLAN FOR 1 BEDROOM

LEWIS VILLAGE HORIZONTAL PROPERTY REGIME  
 GREENVILLE COUNTY  
 GREENVILLE, SOUTH CAROLINA

Scale 1" = 10' February, 1979

DALTON & NEVES CO., ENGINEERS

GREENVILLE, S. C.

This is to certify that this is a  
 Typical Section of the following  
 units of Lewis Village Horizontal  
 Property Regime:  
 2A, 2B, 2C, 2D, 4A, 4B, 4C, 4D

S. C. Reg. No. 916

*R. W. Hansen*