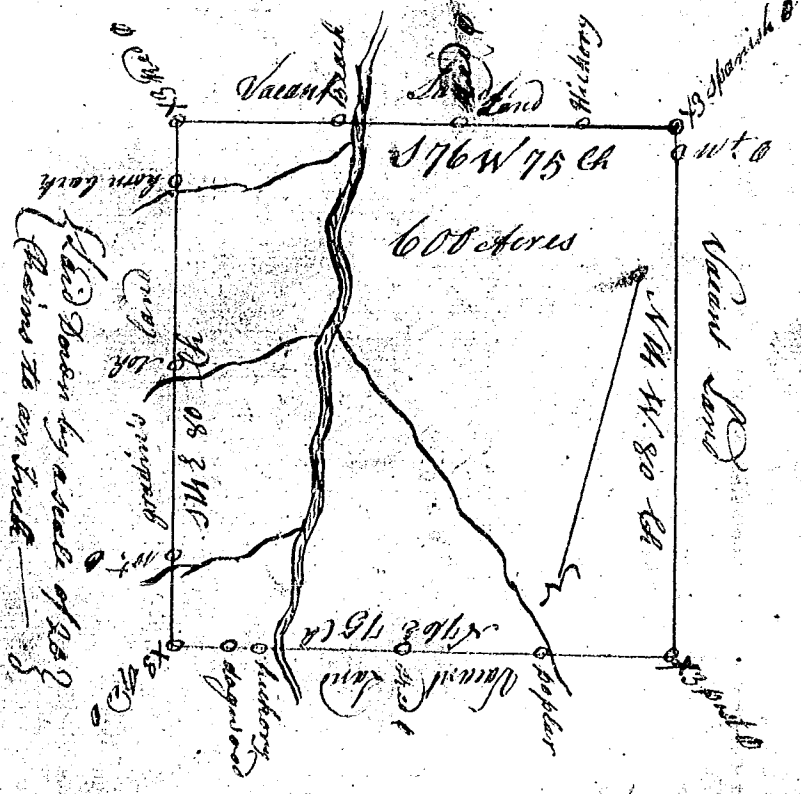


State of South Carolina
 Pursuant to a warrant from John Thomas Esq^r Commissioner of Locations dated the 29th May 1784 I have admeasured and laid out unto James Reynolds a tract of Land containing six hundred and forty acres Situate in ninety six on both sides of Needy river of Saluda about two miles above the old Indian boundary, bounded on all sides by Vacant Land, and hath such form and Markes as the above plat Represents
 Surveyed 6th June 1784
 George Salmon D.S.
 Delivered to John Collins



State of South Carolina
 Pursuant to a warrant from John Thomas Esq^r Commissioner of Locations, dated May 21st 1784, I have admeasured and laid out unto David Leach a tract of Land containing six hundred acres situate in ninety six district on both sides of Needy river of Saluda about two miles above the old Indian Boundary, bounding NE on Hoop's gradin's land, all other sides Vacant, and hath such shape and Markes as the above plat Represents
 Surveyed 15th June 1784
 George Salmon D.S.
 Delivered to John Collins