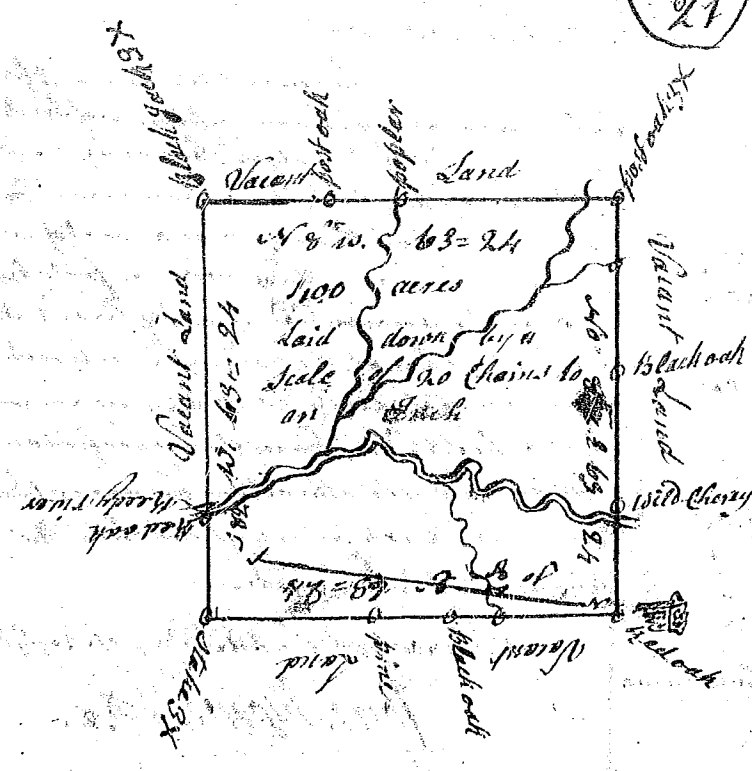
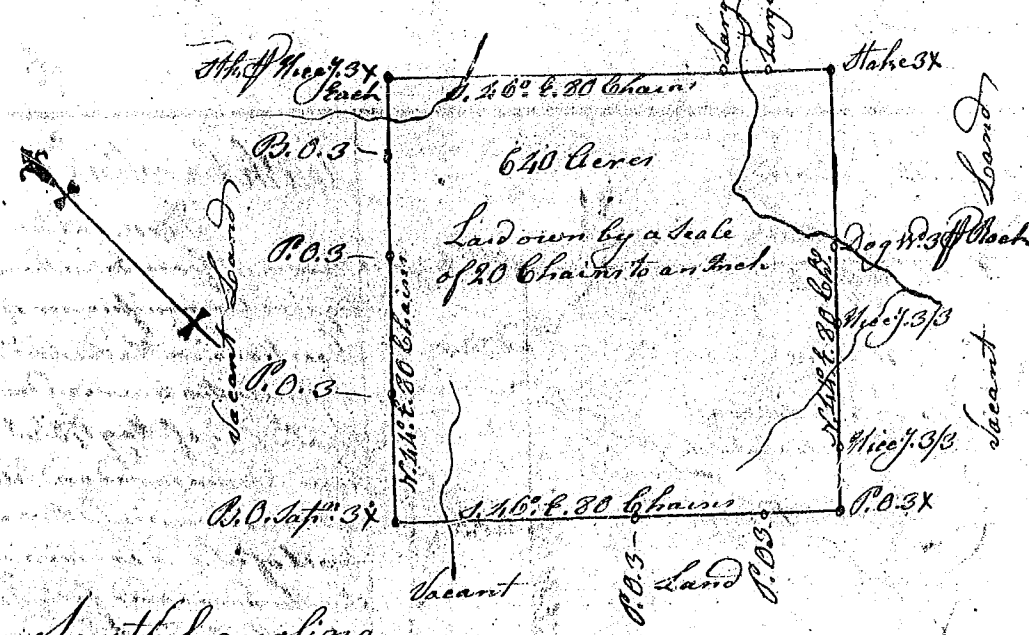


State of South Carolina
 Pursuant to a warrant from John Thomas Esq. Commissioner of Locations dated the 26th day of May 1784, I have admeasured and laid out unto Samuel Earle a Tract of four hundred acres of Land situate in Ninety Six district on both sides Needy River an ancient Boundary Tract including Improvement formerly claimed by Robert Paris Bounding on all sides by Vacant Land, and hath such shape and marks as the above plat represents,
 Surveyed the 28th day of June 1784
 Wm. Benson Esq.
 Delivered to Saml. Earle



Land lately surveyed



South Carolina

Pursuant to a Warrant from John Thomas Esquire Commissioner of Locations in the District of Ninety Six bearing Date the 25th Day of May 1784 I have admeasured and laid out unto John Bowie a Tract of Land containing six hundred and forty Acres (above the ancient boundary line) situate on the Golden Grove a branch of Saludy River cutting and bounding to the N. E. on a New Survey and all other sides on Vacant Land, and hath such form and marks as the above Plat represents
 Surveyed the 22nd Day of May 1784
 John Morille D.V.
 Recorded the 1st Day of July 1784
 and Delivered to John Bowie