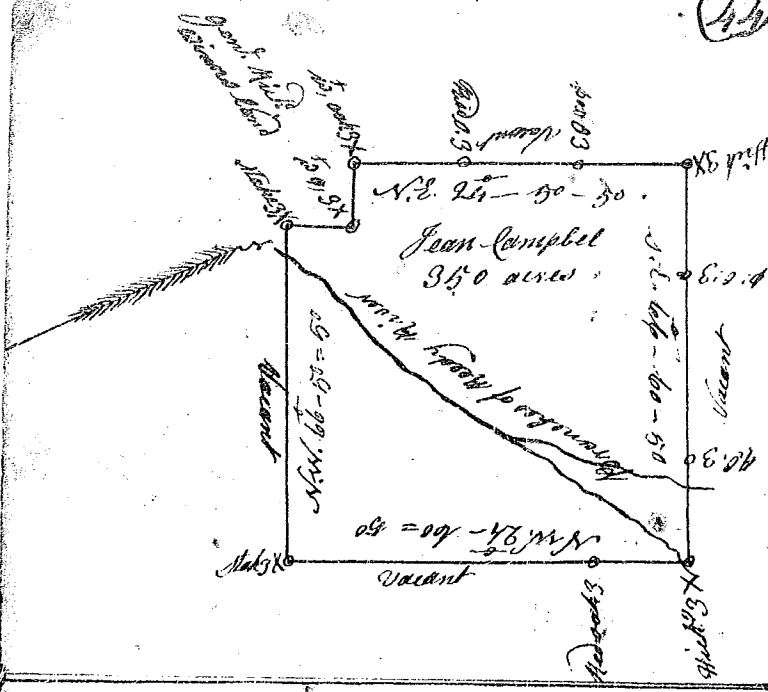
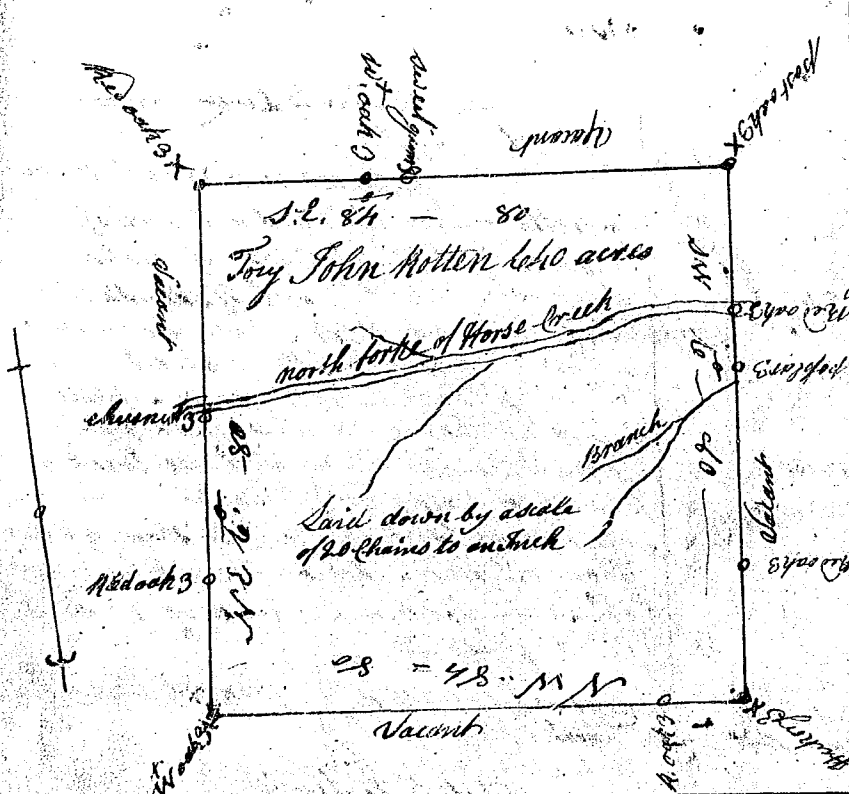


South Carolina



Pursuant to a warrant to me directed under the hand and seal of John Thomas Esq^r Commissioner of Locations for ninety six District North of Saluda River Dated 21 May 1784 I have admeasured and laid out unto Jean Campbell a tract of Land containing 350 acres. Situat in the District afores^d, lying and being on the waters of Ready River of Saluda River, bounded on the West Corner of on land laid out for Richard - Wiken all other sides on Vacant Land - and hath such shape form and marks as the above plat represents
 Surveyed the 26th day of May 1784
 Thomas Lewis Esq^r
 Recorded the 15 July 1784
 Deliv^d to Lewis



Pursuant to a warrant to me directed under the hand and seal of John Thomas Esq^r Commissioner of Locations for the district of 96 North of Saluda River dated the 21st of May 1784. I have admeasured and laid out unto John Motten a tract of Land containing six hundred & forty acres situate lying being in 96 District North of Saluda River on the north fork of Horse Creek bounding on all sides on vacant land and hath such shape form & marks as the above plat represents.
 Surveyed the 11th day of June 1784
 Thomas Lewis Esq^r
 Recorded the 16th July 1784
 Deliv^d to Lewis

Pursuant to a warrant to me directed under the hand and seal of John Thomas Esq^r Commissioner of Locations for ninety six district north of Saluda River, dated the 21st day of May 1784 I have admeasured and laid out unto Sarah Milling a tract of Land containing three hundred acres - Situat lying and being in ninety six district North of Saluda River on the waters of Ready River North side, bounding on the N.E. on land laid out to John Winn Senior, all other sides Vacant and hath such shape form and marks as the above plat represents,
 Surveyed the 24th day of May 1784.
 Recorded the 16th day of July 1784
 Thomas Lewis Esq^r
 Deliv^d to Lewis

