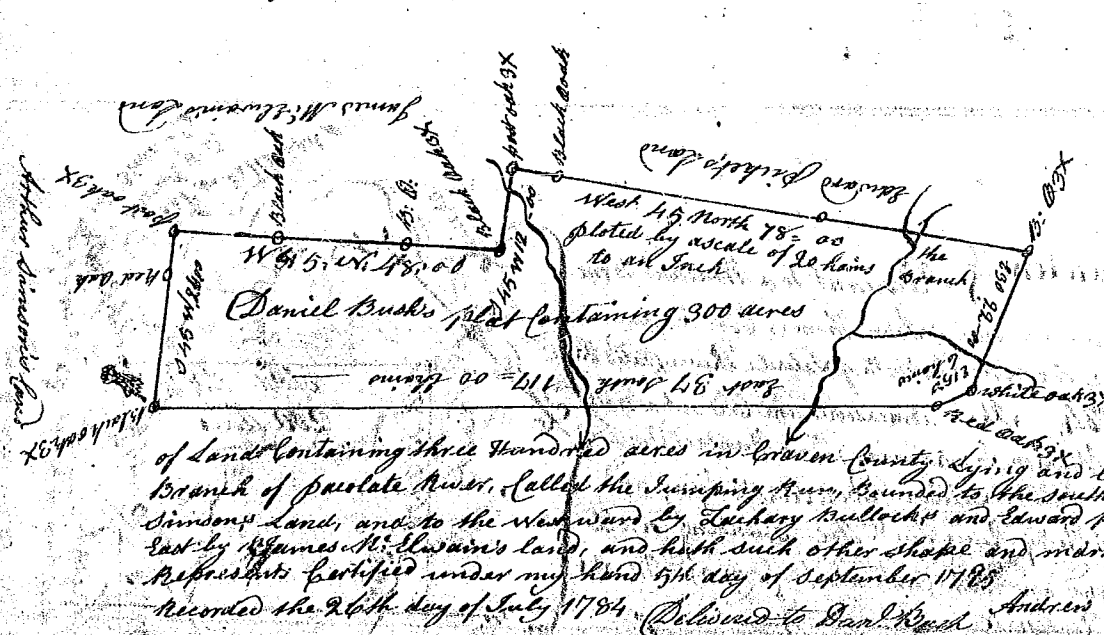
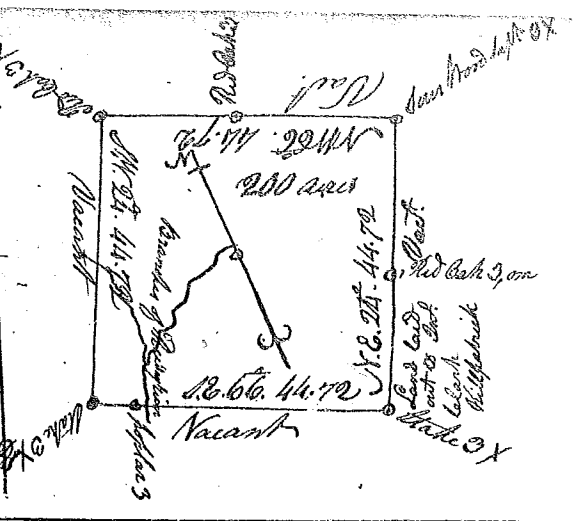


South Carolina } Pursuant to a Warrant to me directed under the hand and seal of John Thomas Esquire Commissioner of Locations for Ninety Six District North of Saluda River dated the 21<sup>st</sup> day of May 1784 I have admeasured and laid out unto John Hughes Esquire, a tract of land containing two hundred acres, in Ninety Six District North of Saluda River, situate lying and being on the banks of Rudy River, bounded on all sides on Vacant Land and hath such shape form and marks as the above Plat represents.

Surveyed the 27<sup>th</sup> day of May 1784 Thomas Lewis D.S.  
Recorded the 26<sup>th</sup> day of July 1784

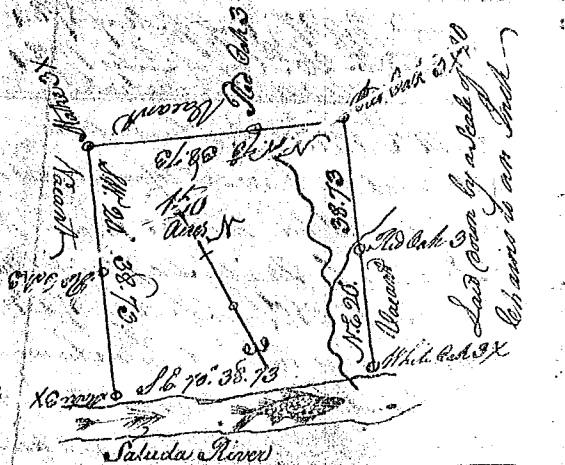


South Carolina } Pursuant to a precept from under the hand and seal of Francis Premier Esq. Deputy Surveyor genl. dated the 18<sup>th</sup> day of June in the year of our Lord 1775 I have admeasured and laid out unto Daniel Busks a plantation or tract of land containing three hundred acres in Craven County lying and being on the small branch of parolite River, called the Jumping Run, bounded to the south side by the land of Simpson, and to the westward by Leakey Bullock's and Edward Pickett's land, to the east by James McBlair's land, and hath such other shape and marks as the above plat represents certified under my hand 5<sup>th</sup> day of September 1785

Recorded the 26<sup>th</sup> day of July 1784 Delivered to Dan. Busks Andrew Thomson D.S.

South Carolina } Pursuant to a Warrant to me directed under the hand and seal of John Thomas Esq. Commissioner of Locations for Ninety Six District North of Saluda River dated the 21<sup>st</sup> day of May 1784 I have admeasured and laid out unto Benjamin Wilson a Tract of land containing one hundred and fifty acres in Ninety Six District North of Saluda River, situate lying and being on Saluda River, bounded on the S.E. on Saluda River, all the sides on Vacant Land, and hath such shape form and marks as the above Plat represents.

Surveyed the 1<sup>st</sup> day of June 1784 Thomas Lewis D.S.  
Recorded the 27<sup>th</sup> day of July 1784



State of South Carolina } Pursuant to a Warrant from John Thomas Esquire Commissioner of Locations dated May the 21<sup>st</sup> 1784 I have admeasured and laid out unto John Hays a tract of land containing three hundred and fifty acres situate in Ninety Six District on both sides of the N. side of Saluda River west of the Old Boundary line, bounded on the N. on Land laid out on 5<sup>th</sup> June 1784 all other sides on Vacant Land and hath such shape form and marks as the above Plat represents.

Surveyed the 28<sup>th</sup> day of May 1784 George Salmon D.S.  
Recorded the 27<sup>th</sup> day of July 1784

