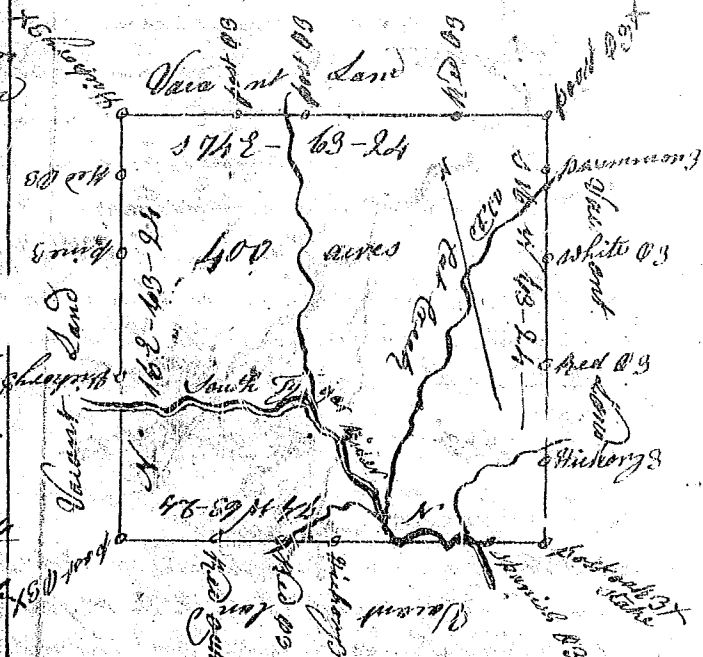


State of Carolina

(60)

Laid down by a scale of 40 Chains to an Inch

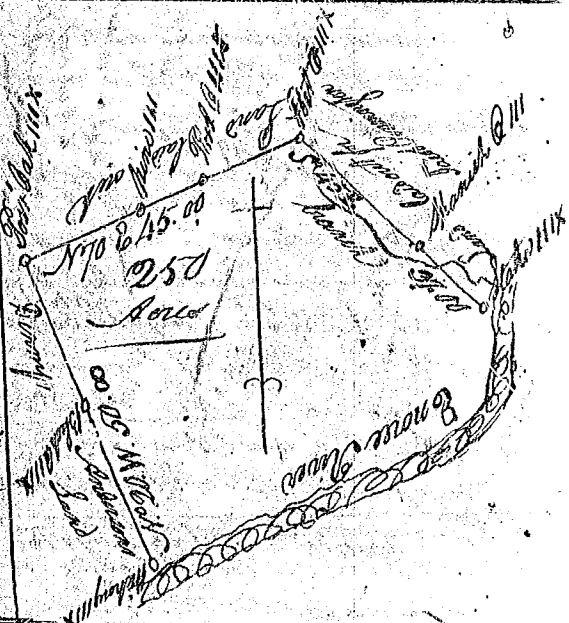
Pursuant to a Warrant from John Thomas Esq. Commissioner of Location dated May the 21st 1784, I have Admeasured and laid out unto Thomas Davis a Tract of Land containing four hundred Acres situated in Ninety six District, west of the Ancient boundary line, on both sides of the Tigger River, including the mouth of Wild-Cat Creek, bounding on all sides on Vacant Land and half such form & marks as the above Platt represents



Surveyed the 26th Day of May 1784
George Salmon D.S.

Recorded the 21st Day of July 1784
Deliv. to Tho. Davis

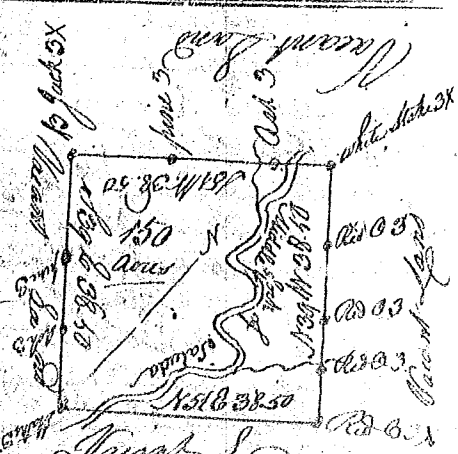
State of South Carolina Pursuant to a Warrant from under the hand and seal of John Thomas Esq. Commissioner of Location N. Calusa River I have Admeasured and laid out unto Henry Anderson a Tract of Land containing two hundred and fifty Acres on the W. Side of the River below the Ancient Boundary bounding Westward on Henry Anderson's Land Northward on Lands laid out Eastward on Lands laid for Jacob Remington and Southwardly on Acres (two) and half such form & marks as the above Platt represents Surveyed the 21st Day of July 1784
Deliv. to Henry Anderson



State of South Carolina

(70)

Pursuant to a Warrant from John Thomas Esq. Commissioner of Location (dated Jan the 11th 1784) I have Admeasured and laid out unto George Wood a Tract of Land containing one hundred and fifty Acres situate in Ninety six District East of the old Indian Boundary on both sides of the Middle fork of Saluda River Near James Bridges Improvement, bounding on all sides on Vacant Land and half such form and marks as the above Platt represents
Surveyed the 21st of June 1784



George Salmon D.S.
Recorded the 29th Day of July 1784
Deliv. to Geo. Wood

Vacant Land
Laid down by a scale of
Twenty Chains to an
Inch