

State of South Carolina

(115)

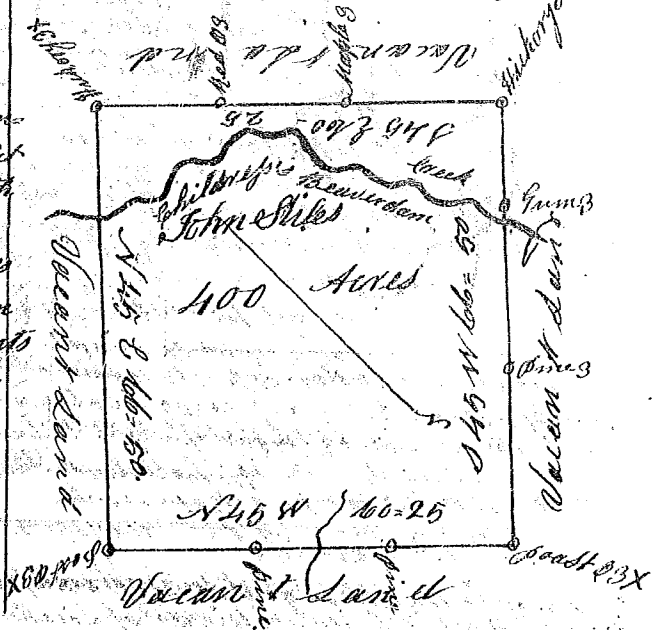
Pursuant to a warrant from John Thomas Esq. Commissioner of Locations Dated May 24th 1784 I have Admeasured and laid out unto John Stiles a tract of Land containing four hundred Acres situate in Ninety Six district west of the old Indian Boundary on both Sides of Whitson's Beaver dam Creek of Tigger Miller Bounding on all sides on Vacant Land, and hath such form and Marks as the above plat represents

Surveyed the 18th June 1784

George Salmon D.S.

Recorded the 15th day of August 1784

Laid Down by a scale of 40 Chains to an Inch



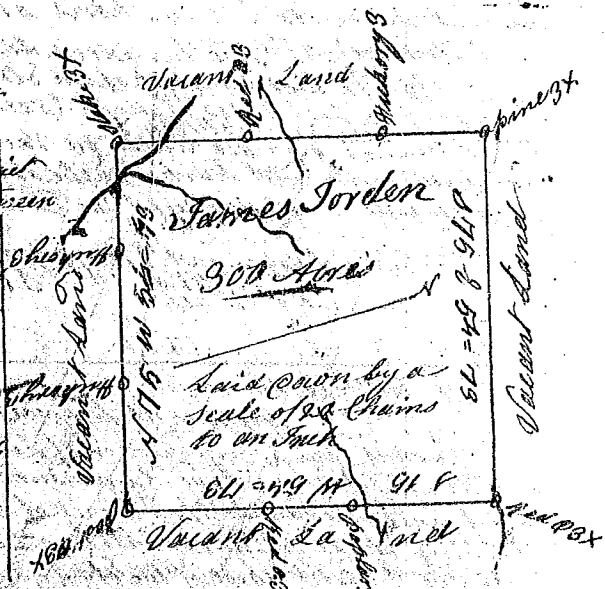
State of South Carolina

Pursuant to a warrant from John Thomas Esq. Commissioner of Locations dated May 24th 1784 I have Admeasured and laid out unto James Jordan a tract of Land containing Three Hundred acres situate in Ninety Six district west of the old Indian Boundary on the Ridge between Needy River and the little fork of said River including a place well known by the name of the old Fort, bounding on all sides on Vacant Land, and hath form and Marks as the above plat represents.

Surveyed the 10th day July 1784

George Salmon D.S.

Recorded the 15th day of August 1784



State of South Carolina

Pursuant to a warrant from John Thomas Esq. Commissioner of Locations Dated May 24th 1784 I have Admeasured and laid out unto Alexander McElhenny a tract of Land containing one hundred and thirty four acres situate lying and being in Ninety Six District west of the old Indian Boundary on the N side of Saluda River Bounding on the west on said River and on the E on land laid out unto Alex. McElhenny on the N West land laid out for Hugh Lewis all other sides on Vacant Land and hath such form and Marks as the above plat represents

Surveyed the 14 June 1784

George Salmon D.S.

Recorded the 15th day August 1784

