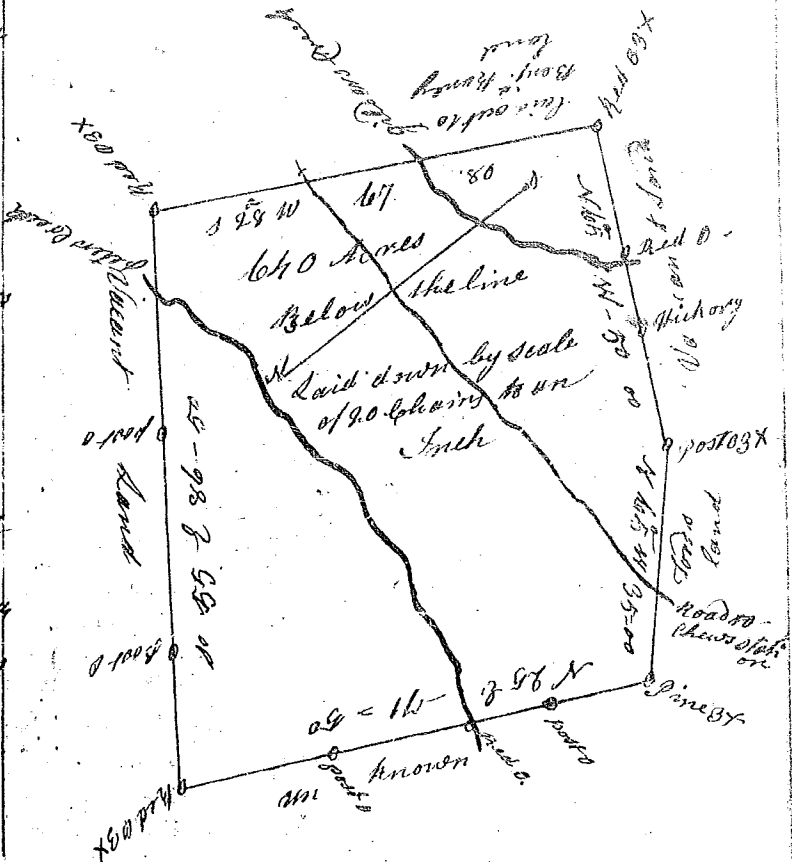


State of South Carolina

(82)

Pursuant to a warrant from John Thomas Esq. Commissioner of Locations dated the 21st day of May 1784 I have admeasured and laid out unto John Beekam a tract of six hundred and Twelve acres of land situate in Ninety six district on Gilders Creek and Peters Creek bounding S & E on land laid out to Benj. Muncy sen. on land laid out for Ford New land unknown and on all other sides by Vacant Land and hath such shape and Marks as the above Plat represents.

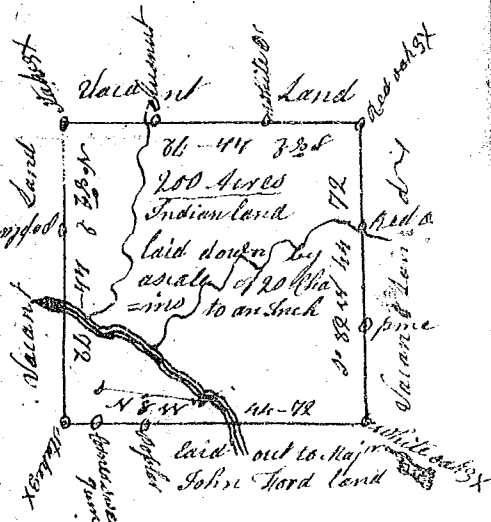
Surveyed the 17th day of June 1784  
 Wm. Benson Det.  
 Recorded the 17th day of August 1784  
 Believ. to John Beekam



State of South Carolina

Pursuant to a warrant from John Thomas Esq. Commissioner of Locations dated the 21st day of May 1784 I have admeasured and laid out unto John Henderson a tract of Two hundred Acres land situate in Ninety six district on the North forke Saluda River bounding to the sea on lands laid out to Maj. John Ford and on all other sides on Vacant Lands and hath shape and Marks as the above Plat represents.

Surveyed the 26th day of July 1784  
 Wm. Benson Det.  
 Recorded the 26th day of August 1784



State of South Carolina

Pursuant to a warrant from John Thomas Esq. Commissioner of Locations dated the 26th day of May 1784 I have admeasured and laid out unto Samuel Earle a tract of Two hundred and forty acres land situate in Ninety six District on the Beaverdam of Endree River bounding on all sides on Vacant Land and hath such shape and Marks as the above Plat represents.

Surveyed the 8th day of June 1784  
 Wm. Benson Det.  
 Recorded the 9th day of August 1784

