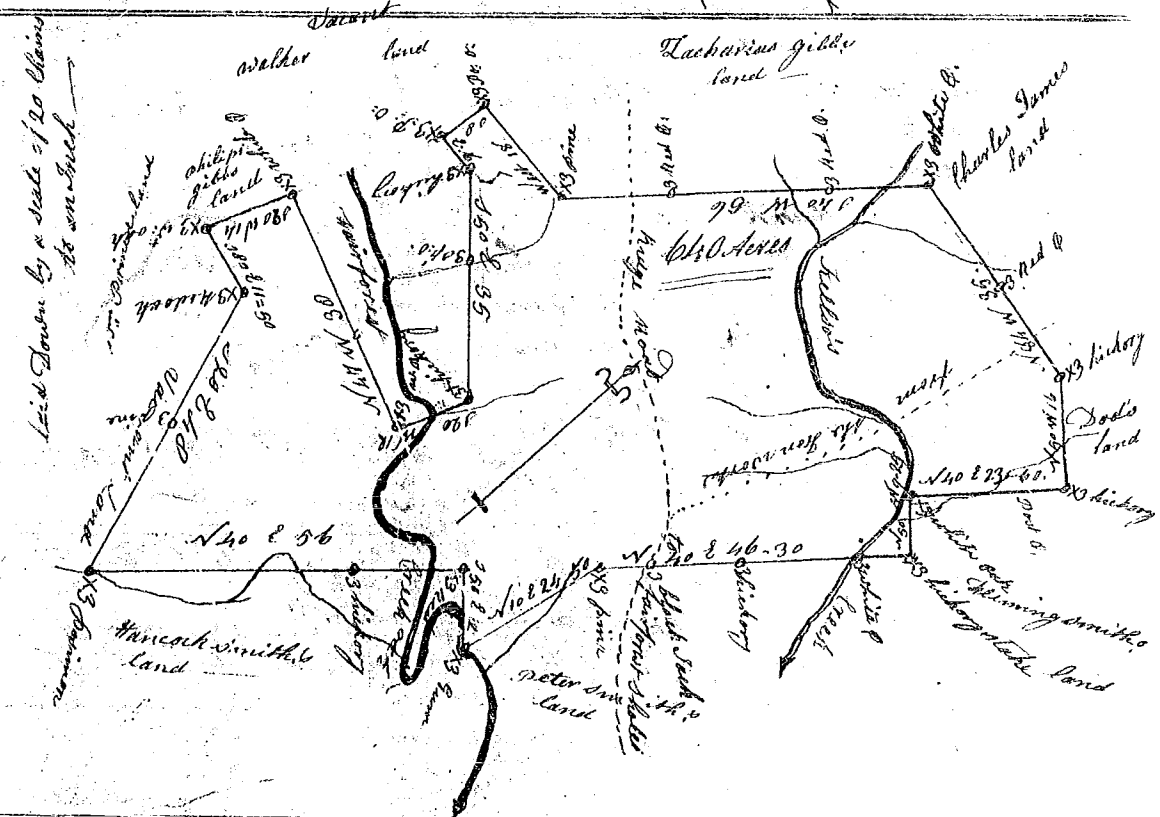
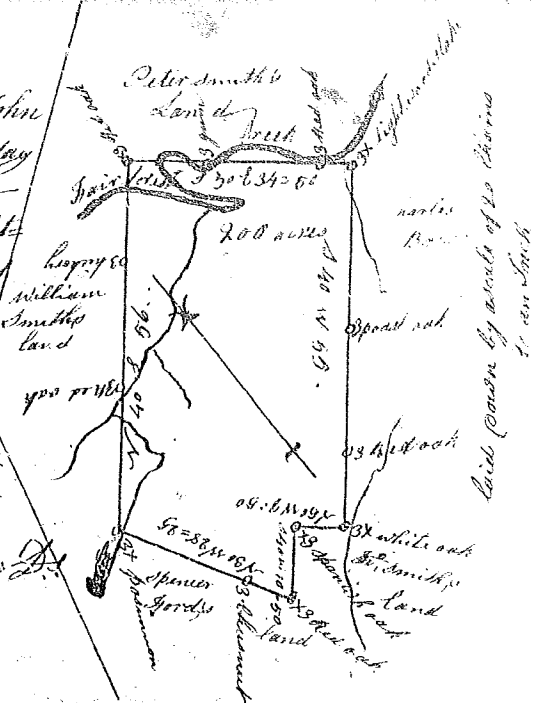


State of South Carolina

Pursuant to a warrant from John Thomas Esq. Commissioner of Locations dated the 19th day of July 1784, I have admeasured and laid out unto Hancock Smith a tract of land containing 200 acres situate in Ninety six district on Fairforest Creek East of the Indian Boundary line bounded on the N.W. by lands of William Smith's on the N.E. by Peter Smith's land, on the S.E. by Charles Bruce's land and on the S.W. by land of Spencer Gordon and has such form and Marks as the above plat represents,

Surveyed the 22nd day of July 1784
 George Salmon D.S.
 Recorded the 23rd day of Aug^r 1784



State of South Carolina

Pursuant to a warrant from John Thomas Esq. Commissioner of Locations Dated June 22nd Day 1784, I have admeasured and laid out unto William Smith a tract of land containing six hundred and forty acres situate in Ninety six District on Fairforest and Helbo's Creek East of the Indian Boundary line, Bounded on the north by the lands of Charles James Nathl. Padd & Jacobus Gibbs On the East by lands of Fleming Smith & Peter Smith's on the South by lands of Hancock Smith & Wm. Prince and on the West by the lands of Philip Gibbs Peter Walker & vacant lands, and hath such form and marks as the above plat represents

Surveyed the 22nd of July 1784
 George Salmon D.S.
 Recorded the 23rd day of August 1784