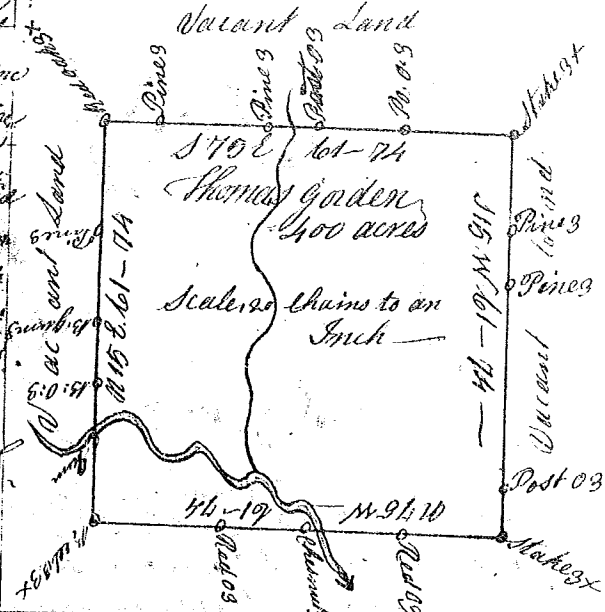


State of S. Carolina 96 District

Pursuant to a warrant from John Thomas Esquire Commissioner of Locations bearing date the 28<sup>th</sup> day of July 1784. I have Admeasured and laid out unto Thomas Gordon, a Tract of Land containing four hundred acres. Lying on a Creek call'd Shicketty, Bounded on all sides by Vacant Land, and hath such shape and marks as the annexed plat Represents Survey the 20<sup>th</sup> July 1784

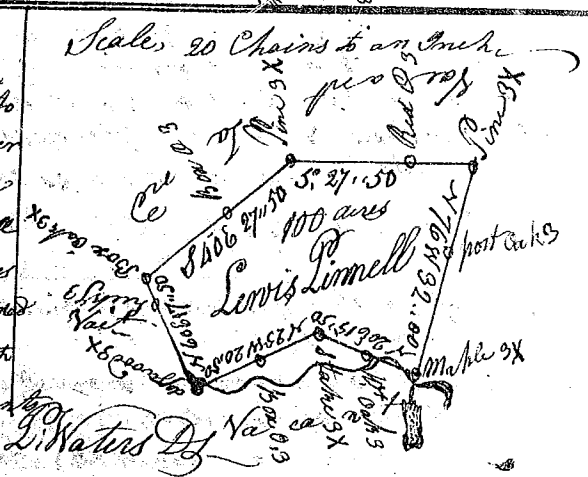
Recorded the 29<sup>th</sup> Sept 1784

L. Waters D<sup>y</sup>



State of South Carolina Ninety Six District East of the Ancient Boundary Pursuant to a warrant from John Thomas Esq. Commissioner of Locations, bearing date 6<sup>th</sup> July 1784. I have Admeasured and laid out unto Lewis Simell a tract of land containing one hundred acres Lying on Hammetts Branch of Fairforest. Bounded N.W. by an old line all other sides Vacant and hath such shape and marks as the Annexed plat Represents Survey the 9<sup>th</sup> August 1784

Recorded the 29<sup>th</sup> of Sept 1784

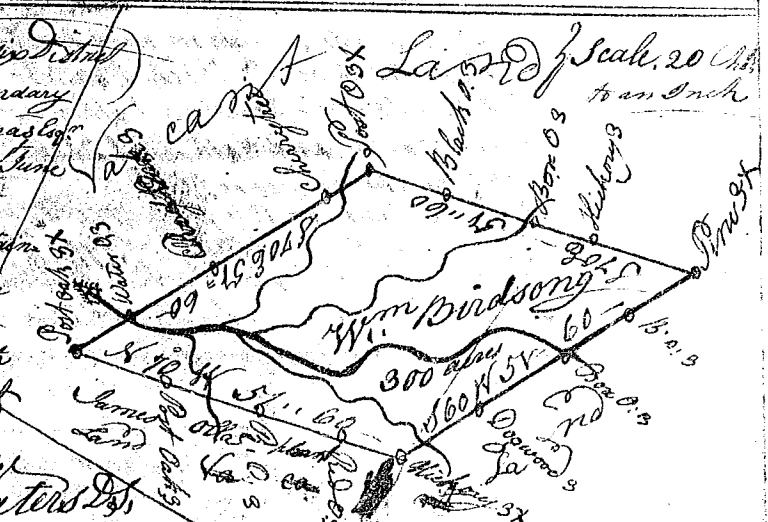


L. Waters D<sup>y</sup>

State of South Carolina Ninety six District On the East side of the Ancient Boundary Pursuant to a warrant from John Thomas Esq. Commissioner of Locations bearing date June 1784. I have Admeasured & laid out unto William Birdsong a Tract of Land containing three Hundred acres. Lying on Sugar creek. Bounded E. by James Claphams Land all other sides Vacant Land and hath such shape and marks as the annexed plat Represents Survey the 9<sup>th</sup> Augt. 1784

Recorded the 29<sup>th</sup> Sept 1784

L. Waters D<sup>y</sup>



State of South Carolina Ninety six District On the East side of the Ancient Boundary line Pursuant to a warrant from John Thomas Esquire Commissioner of Locations On the N. side of Saluda River dated 2<sup>nd</sup> June 1784. I have Admeasured and laid out unto James Bonnet a Tract of Land containing one hundred and forty five acres Lying on a small Branch off Dulshmans Creek Bounded on all sides by Vacant Land and hath such shape & marks as the Annexed plat Represents Survey the 11<sup>th</sup> Augt. 1784

Recorded the 29<sup>th</sup> Sept 1784

L. Waters D<sup>y</sup>

