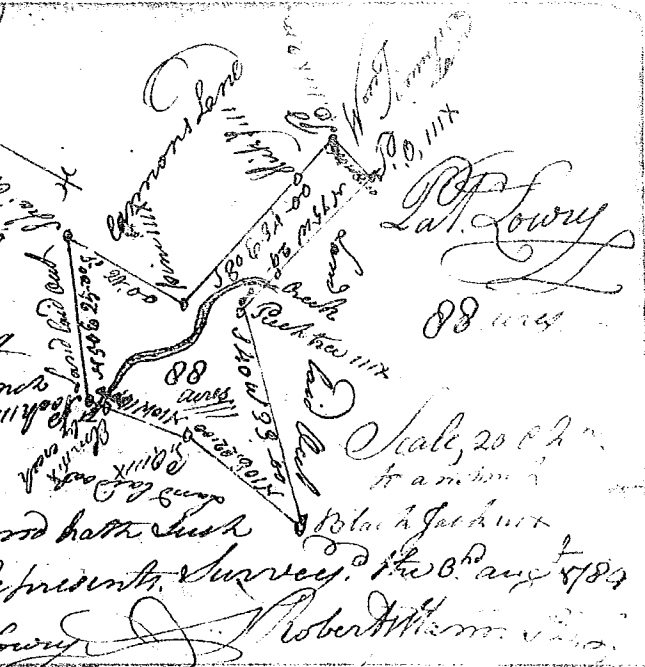
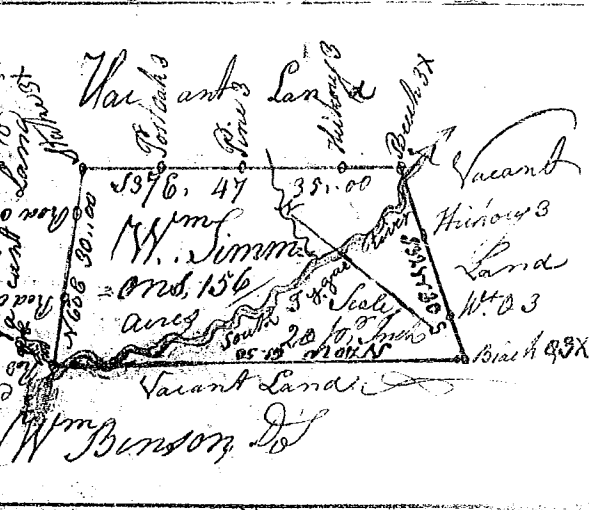


State of S. Carolina (184)

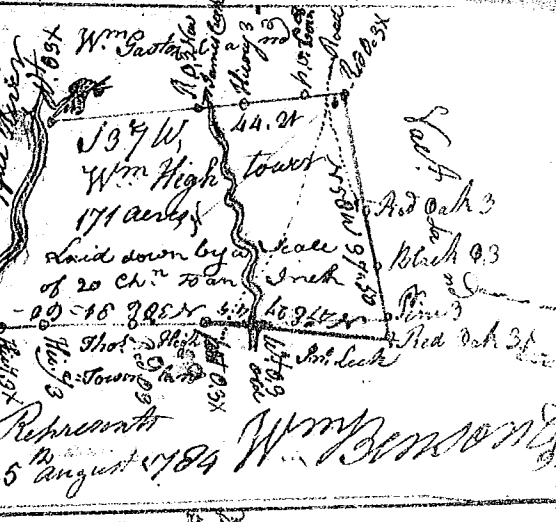
Pursuant to a warrant from John Thomas Esq. Commissioner of Locations in Ninety Six District North of Saluda River bearing date the 19<sup>th</sup> day of July 1784 I have admeasured and laid out unto Patrick Lowry a tract of land containing Eighty Eight acres, on Siders creek a branch of Indian creek below the line bounded by John Simmons Survey & on W. Gimmys land all other sides on survey. land, and hath such shape and marks as the above plat represents. Surveyed this 8<sup>th</sup> Aug 1784. Recorded the 12<sup>th</sup> day of Oct. 1784. (Deliv. to S. W. Lowry) Wm Benson D<sup>r</sup>



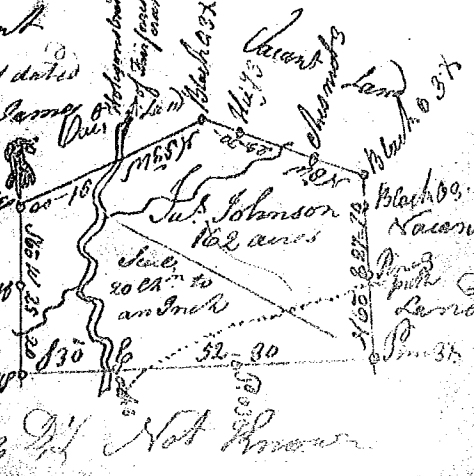
State of South Carolina Pursuant to a warrant from John Thomas Esq. Commissioner of Locations dated the 17<sup>th</sup> day of July 1784 I have admeasured and laid out unto William Simons a tract of one hundred & fifty six acres 50 poles of land, situate in Ninety Six District East of the Ancient Boundary line on both sides of S. Tigger River. Bounding on all sides by land & hath such shape & marks as the annexed plat represents. Surveyed this 12<sup>th</sup> Aug 1784. Recorded the 13<sup>th</sup> day of Oct. 1784.



State of South Carolina Pursuant to a warrant from John Thomas Esq. Commissioner of Locations dated 7<sup>th</sup> July 1784 I have admeasured and laid out unto Wm. Hightower a tract of one hundred and seventy one acres of land, situate in Ninety Six District, east of the Ancient Boundary line, on North Tigger River. Bounding E. on Wm. Easton N.W. on John Leach & Thomas Hightower. & all other sides Vac. and hath such shape and marks as the above plat represents. Surveyed this 25<sup>th</sup> August 1784. Recorded the 12<sup>th</sup> day of Oct. 1784.



State of South Carolina Pursuant to a warrant from John Thomas Esq. Commissioner of Locations dated 14<sup>th</sup> July 1784. I have admeasured and laid out unto James Johnson, a tract of one hundred & thirty two acres of land situate in Ninety Six Dist. East of the Ancient Boundary line, on Holsons branch of Fairforest. Bounding S.W. on land not known & all other sides vacant, & hath such shape and marks as the annexed plat represents. Surveyed this 7<sup>th</sup> Sept. 1784. Recorded this 11<sup>th</sup> day of Oct. 1784.



Wm Benson D<sup>r</sup> Not known