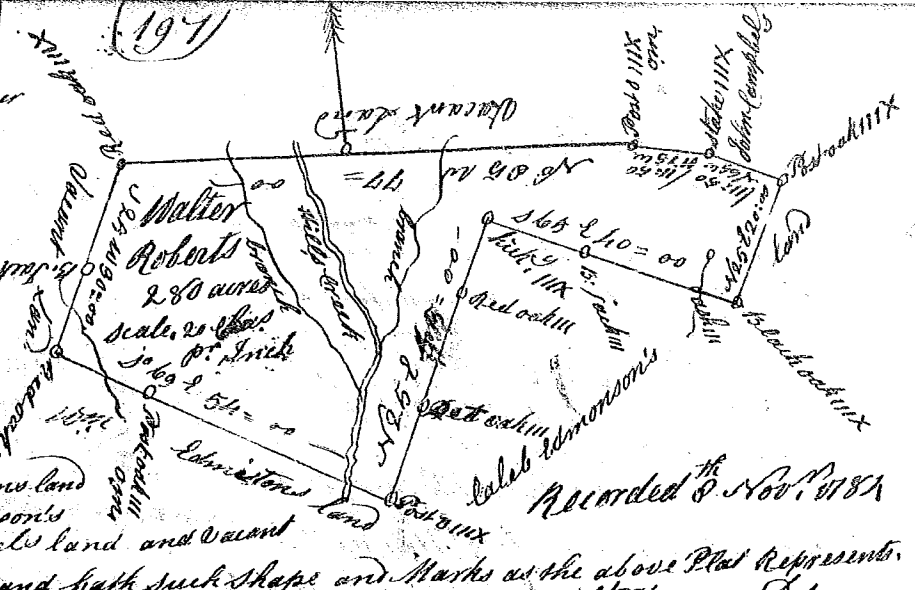


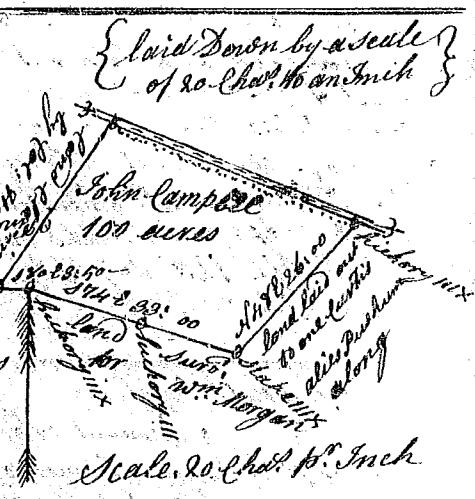
State of South Carolina,

Pursuant to a warrant from John Thomas Esq. Commissioner of Locations in ninety six district No Saluda River dated the 23rd July 1784 I have admeasured and laid out unto Walter Roberts a tract of land containing Two hundred and eighty acres on Hills Creek a branch of Enoree River below the Indian boundary Bounded S.E. on w^m Edmonson's land N.E. and S.E. on Caleb Edmonson's land and on John Campbell's land and Vacant land and N.W. on Vacant land, and hath such shape and Marks as the above Plat Represents. Surveyed the 2^g day of July 1784



State of South Carolina,

Pursuant to a warrant from John Thomas Esq. Commissioner of Locations in Ninety six district North side Saluda River Dated the 2^d July 1784, I have admeasured and laid out unto John Campbell a tract of land containing one hundred acres on Sugar River, below the Indian boundary Bounding N.W. by said River S.W. on land claimed by Col. Hopkins S.E. on land surveyed for w^m Morgan N.E. on land laid out to Thomas Curtis, and hath such shape and Marks as the annexed Plat Represents. Surveyed 23 July 1784



State of South Carolina,

Pursuant to a warrant from John Thomas Esq. Commissioner of Locations in ninety six District No Saluda River dated the 21st day July 1784, I have admeasured and laid out unto James Adington a tract of Land containing one hundred and fifty three acres, on the North side of Enoree River below the Indian line bounding S.E. on said Enoree River E. on w^m Young's land W. on Caleb Edmonson's land N.E. on Vacant land, and hath such shape and Marks as the above Plat Represents. Surveyed 27 July 1784



Recorded 9th Nov: 1784

Robert Hanna D.