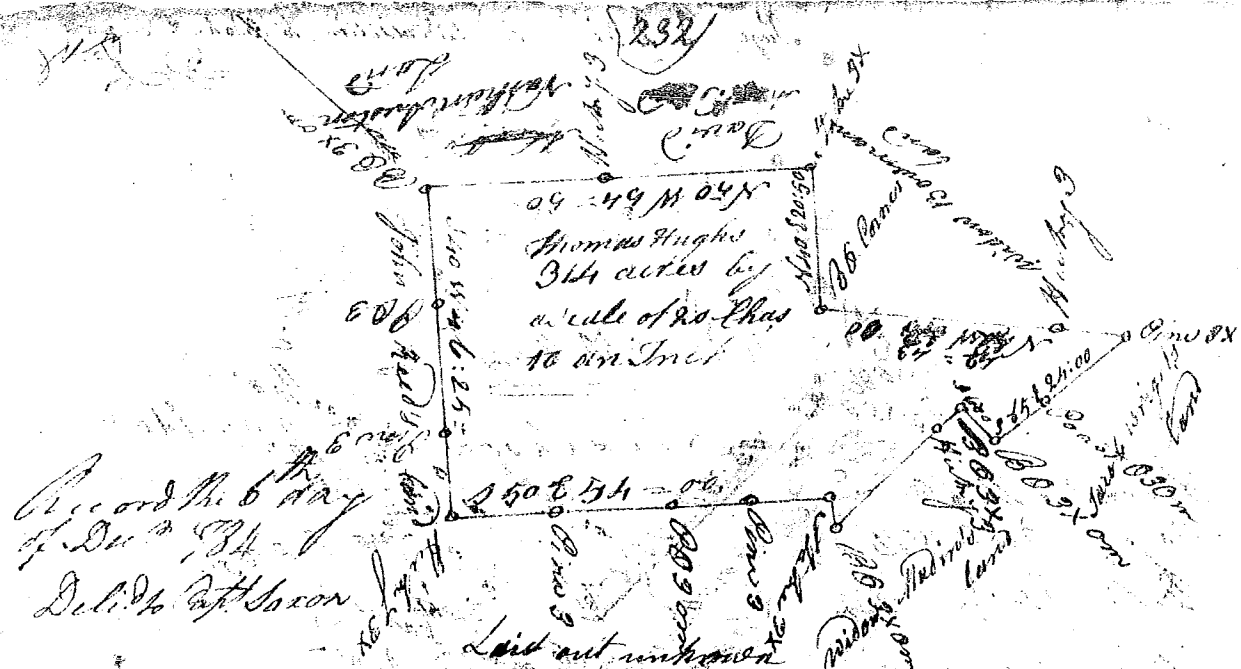


232



Recorded the 6 day
of Dec 1834
Del. to Coffeyson

Laid out unknown

State of South Carolina

Pursuant to warrant from John Thomas Esq. Commissioner of Locations Dated the 21st day of Augt 1834 I have Admeasured and laid out unto Thomas Hughes a tract of land containing 3 1/4 Acres situated in Ninety six District on a branch of a Creek called the Beaver Dam Below the Ancient Boundary Line Bounded N. E. on Das Alex and N. W. on Austin M. W. on John and M. on Land laid out James E. on the Widow Madden and Jacob Wright Land and E. on the Widow Bowman. Laid out in a black such shape and marked as the above Plat Representing Survey & By me the 8th day of Oct 1834
Joseph Coffeyson Deft. Sur.

State of South Carolina

Pursuant to warrant from John Thomas Esq. Commissioner of Locations Dated the 21st day of Augt 1834 I have Admeasured and laid out unto Thomas Hughes a tract of 3 1/4 Acres of land situated in Ninety six District on a branch of a Creek called the Beaver Dam below the Ancient Boundary Line Bounded N. E. on Joseph Coffeyson & Co. on Land and all other sides on Uncult Land and laid out in a black such shape and marked as the above Plat Representing



Surveyed By me the 9th day of Oct 1834
Recorded the 6 day of Dec 1834
Del. to Coffeyson
Joseph Coffeyson Deft. Sur.