

State of S. Carolina

Pursuant to a warrant from John

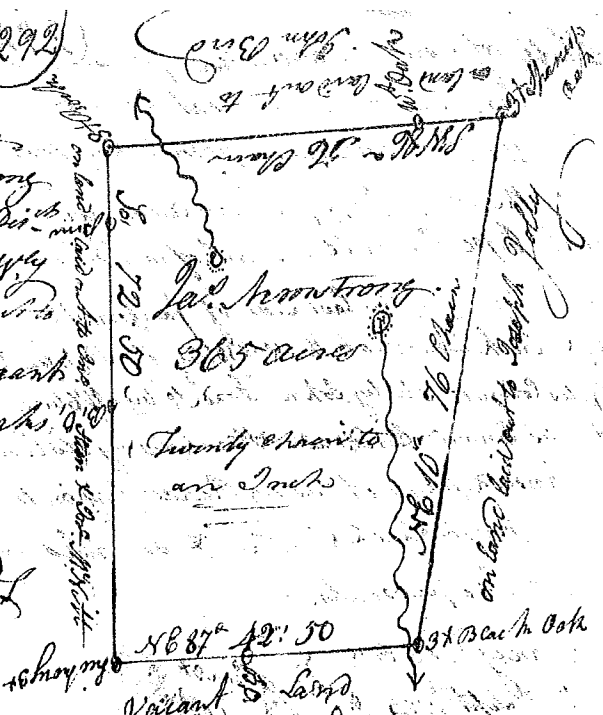
Thomas Esq. Comr. Locations I have measured & laid out unto James Armstrong a tract of 365 acres of land Situate in 96 Dist. on the waters of Gibbs creek Bounding N.W. by on land laid out to John Bird, on land laid out to John Stoen & John Smith all other sides on Vacant and laid out and hath such shape & marks as the annexed plat represents

Survey the 9<sup>th</sup> of Decr 1784

J. P. Thompson

Recorded the 3<sup>rd</sup> Jan<sup>y</sup> 1785

Delivered to Wm. Jefferson



State of South Carolina 96<sup>th</sup> District on the East side of the ancient Boundary line

Pursuant to a warrant from John Thomas Esq. Comr. Locations bearing date the 12<sup>th</sup> August 1784. I have measured and laid out unto James Brantley a tract of 300 acres containing three hundred acres lying on both sides of Ferguson's Creek bounded to the north west by an old line to the West by Benjamin Griffiths and all other sides on Vacant Land and hath such shape and marks as the annexed plat represents

Survey the 31<sup>st</sup> Aug. 1784

J. P. Thompson

Recorded the 3<sup>rd</sup> Jan<sup>y</sup> 1785

Delivered to James Brantley



State of South Carolina Ninety six District on the East side of the ancient Boundary line

Pursuant to a warrant from John Thomas Esq. Comr. Locations (dated the 5<sup>th</sup> day of Decr 1784) I have measured and laid out unto John Neale a tract of land containing three hundred & sixty eight acres lying on the Small Branches of Fairmount Creek bounded on Harless Creek Bounded N.W. by John Simpson and N.W. by Hugh Donda all other sides on Vacant Land and hath such shape & marks as the annexed plat represents

Survey the 15<sup>th</sup> Decr 1784

Recorded the 3<sup>rd</sup> Jan<sup>y</sup> 1785

Del. to J. Neale

J. P. Thompson

