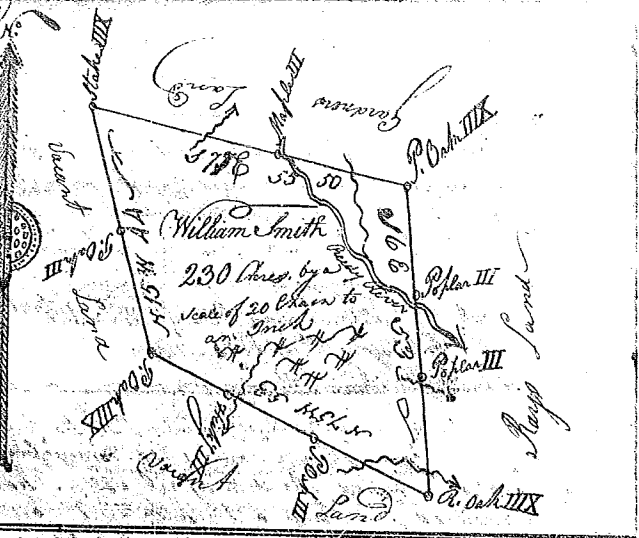
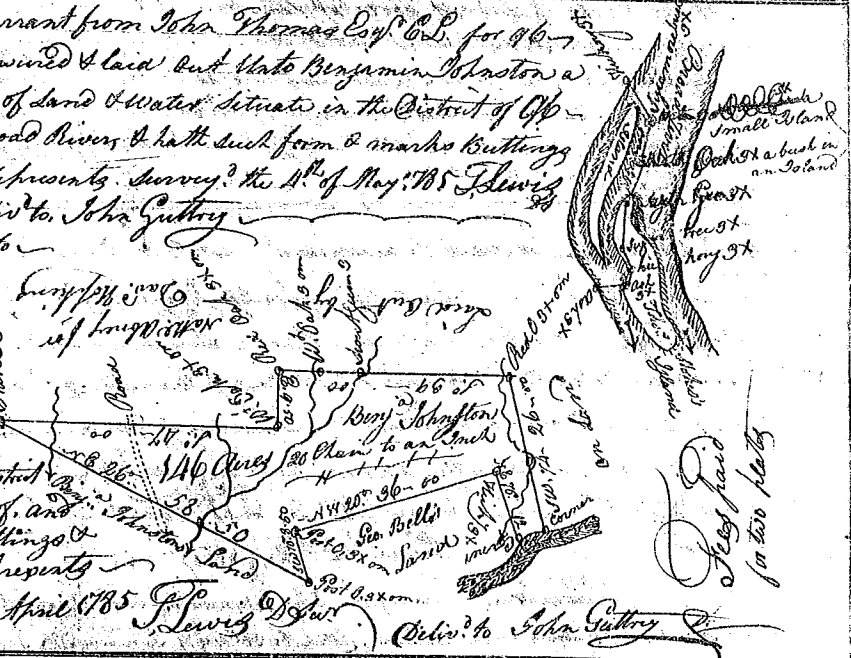


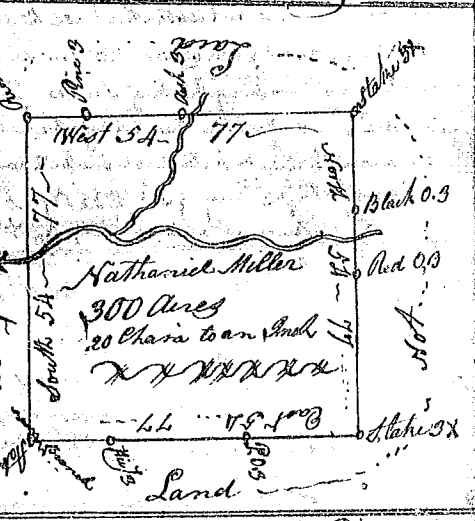
State of South Carolina Pursuant to a warrant from John Thomas Esq. Com. Locations for the District of the N. of Santee River, I have surveyed & laid out unto William Smith a tract of Land Containing Two Hundred & thirty acres. Situated above the ancient Boundary line on both sides of Santee River: Bounded N. & W. by Jacob Landrup's Land & by Sawney Ray's Land and all other sides on vacant Land & has such shape and marks as the annexed plat represents  
 Surveyed the 28<sup>th</sup> April 1785  
 Recorded the 6<sup>th</sup> May 1785  
 James Gibson Esq.



South Carolina Pursuant to a warrant from John Thomas Esq. Com. for 96<sup>th</sup> District N. of Santee River, I have surveyed & laid out unto Benjamin Johnston a tract of Land Containing 25 acres of Land & water Situated in the District of 96<sup>th</sup> including two small Islands in Broad River & hath such form & marks Buttings and Boundings as the annexed plat represents. Surveyed the 1<sup>st</sup> of May 1785  
 Recorded the 6<sup>th</sup> May 1785 & Deliv<sup>d</sup> to John Gentry  
 State South Carolina Pursuant to a warrant from John Thomas Esq. Com. for Ninety six District N. of Santee River, dated the 20<sup>th</sup> day of April 1785  
 I have Admeasured & laid out unto Benjamin Johnston a tract of Land Containing One Hundred & forty six acres. Situated in 96<sup>th</sup> District on Broad River and the waters thereof, and hath such shape form & marks Buttings & Boundings as the above plat represents  
 Surveyed the 25<sup>th</sup> day of April 1785  
 Recorded the 6<sup>th</sup> May 1785  
 Deliv<sup>d</sup> to John Gentry



State of S. Carolina Pursuant to a warrant from John Thomas Esq. Commissioner of Locations dated the 16<sup>th</sup> day of April 1785 I have admeasured & laid out unto Nathaniel Miller a Tract of Three Hundred acres of Land Situated in 96<sup>th</sup> District East of the ancient Boundary, on the Santee River. Bounding on all sides on vacant Land & hath such shape and marks as the above plat represents  
 Surveyed this 19<sup>th</sup> day of April 1785  
 Recorded this 6<sup>th</sup> May 1785  
 W. Benson Esq.



State of South Carolina Pursuant to a warrant from John Thomas Esq. Commissioner of Locations in Ninety six District South of Santee River, dated the 5<sup>th</sup> of August 1785. I have admeasured and laid out unto Joel Thacker a Tract of Land Containing Two Hundred acres below the ancient Boundary line. Situated in 96<sup>th</sup> District on Santee River, bounding to the N. on S. River and all other sides on vacant Land and hath such form & marks as the above plat represents  
 Surveyed this 5<sup>th</sup> day of Augt. 1785  
 Recorded the 29<sup>th</sup> April 1785  
 Deliv<sup>d</sup> to John Bowie Esq.

