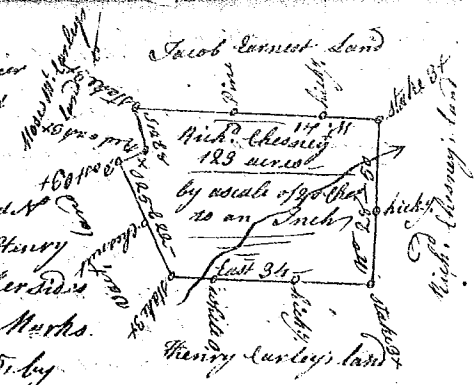


State of S<sup>c</sup> Carolina 96 @ District N<sup>o</sup> of Saluda

Pursuant to a warrant from John Thomas Commissioner of Locations dated 21 day of May 1785, I have admeasured and laid out unto Rich<sup>d</sup>. Chesney a tract of land containing one hundred and twenty three acres, situate on a branch of James's Creek, waters of Tygar River, bounded N<sup>o</sup> by Jacob Earnest's land, East by Rich<sup>d</sup>. Chesney's land, S<sup>o</sup> by Henry Curley's land W<sup>o</sup> by Moses M<sup>c</sup> Lanley's land, on all other sides by Vacant land, and hath such shape form and Marks as the above Plat Represents, Survey, 20th May 1785, by

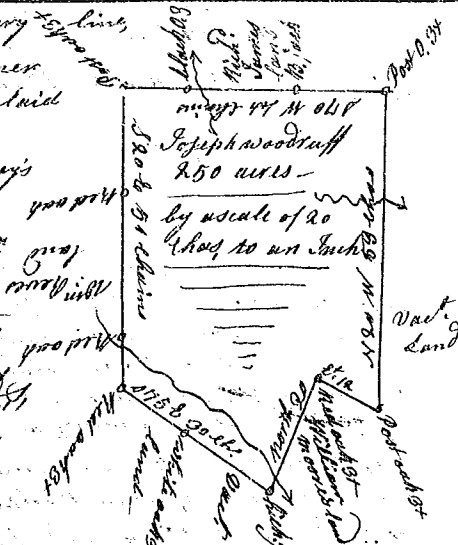
Recorded 19th July 1785



State of S<sup>c</sup> Carolina 96 @ District E<sup>o</sup> of the ancient boundary

Pursuant to a warrant from John Thomas Commissioner of Locations dated 8th March 1785, I have Measured and laid out unto Joseph Woodruff a tract of land containing two hundred and fifty acres, lying both sides James's Creek waters of Tygar River, bounded N<sup>o</sup> by Rich<sup>d</sup>. James's land, W<sup>o</sup> by William Reeves's land, S<sup>o</sup> by Moore's land, all other sides Vacant land, and hath such shape and Marks as the above Plat Represents, Survey, 30th March 1785, by Andrew Thomson

Recorded 19th July 1785



State of South Carolina  
Laurence County

Pursuant to a warrant from John Thomas Esq<sup>r</sup> Commissioner of Locations dated 25 April 1785, I have admeasured and laid out unto John Martin a tract of six hundred and forty acres of land on a branch of Willcocks's Creek called Redlick, bounding S<sup>o</sup> & S<sup>o</sup> on lands of Edmond Leary Wood N<sup>o</sup> on land of James Hillson & East on lands of Adam Taylor and the other sides on Vacant Land, and hath such shape and Marks as the above Plat Represents, Survey, the 23<sup>rd</sup> May 1785,

Recorded 20 July 1785

