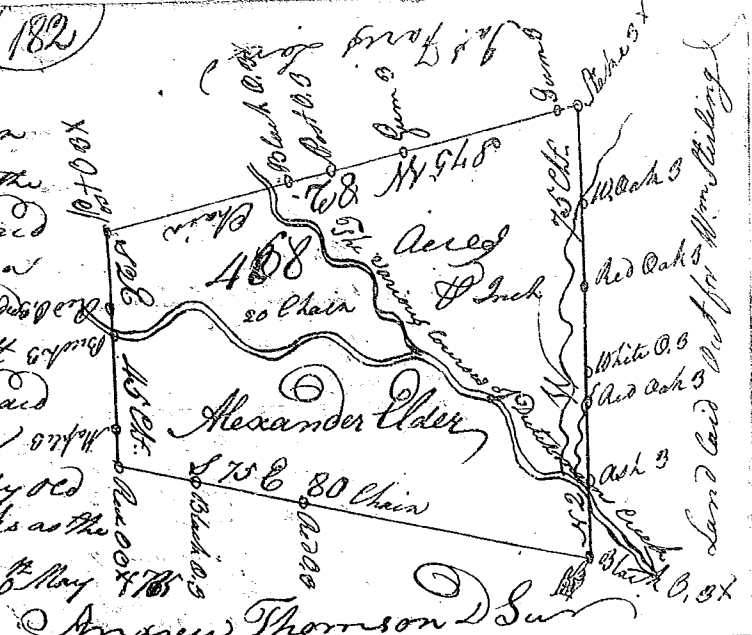


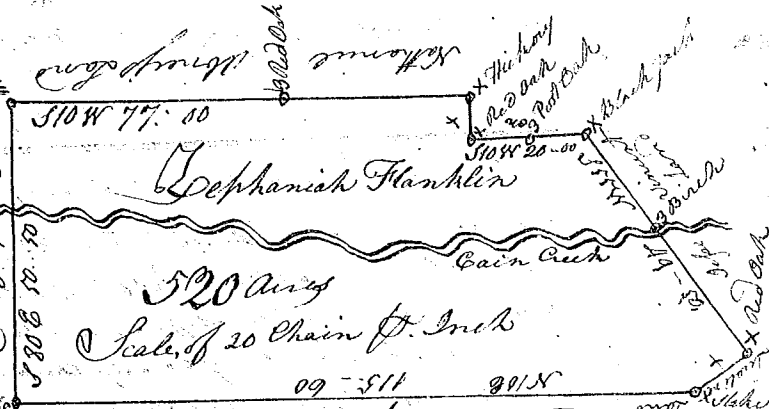
State of S<sup>c</sup> Carolina Kinley 20<sup>th</sup> Dec<sup>r</sup> 1785  
 Pursuant to a warrant from John Thomas Esq<sup>r</sup> Commissioner of Locations Dated the 28<sup>th</sup> May of 1785. I have admeasured and laid out unto Alexander Elder a Tract of Land containing four hundred and sixty eight acres lying on both sides of Dutchmans Creek bounded East by land laid out to W<sup>m</sup> Stirling NW by James Faris's Land S<sup>c</sup> by old Lines & hath such shape & marks as the above Plat Represents Surveyed this 30<sup>th</sup> May 1785



Recorded the 22<sup>nd</sup> July 1785  
 Obedt. to John Elder Esq<sup>r</sup>

Andrew Thomson D<sup>r</sup>

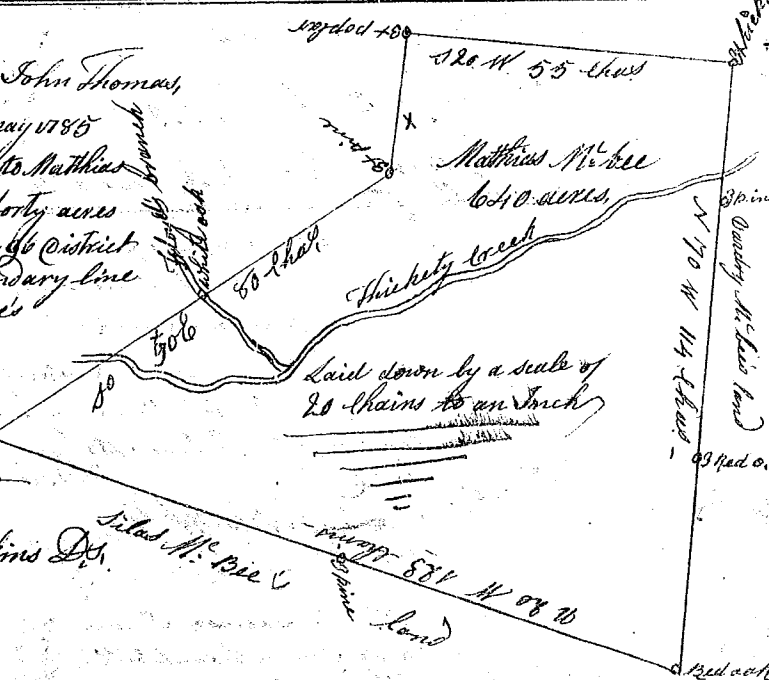
State of S<sup>c</sup> Carolina  
 Pursuant to a warrant from John Thomas Esq<sup>r</sup> Commissioner of Locations Dated the 6<sup>th</sup> day of June 1785. I have admeasured & laid out unto Leppheniah Franklin a tract of 520 acres of land situated in 96<sup>th</sup> dist<sup>r</sup> N<sup>c</sup> side of Saluda on same creek bounding to the N.E. on Nathl. Olney S<sup>c</sup> on Wm Vincents land S<sup>c</sup> on Sullins Land Other sides on land laid out & hath such shape & marks as the above Plat Represents. Surveyed this 8<sup>th</sup> day of June 1785



Recorded the 26<sup>th</sup> July 1785. Obedt. to James Vepel. by Order from M. Kinross

Ferdinand Hopkins D<sup>r</sup>

South Carolina  
 Pursuant to a warrant from John Thomas Commissioner of Locations, dated 18<sup>th</sup> May 1785 I have admeasured and laid out unto Matthias M<sup>c</sup>bee a tract of six hundred and forty acres of land, situate lying and being in 96<sup>th</sup> district N<sup>c</sup> Saluda River. below the old boundary line bounded S<sup>c</sup> W<sup>c</sup> by land of Silas M<sup>c</sup>bee's NW by land laid out to Lucy M<sup>c</sup>bee's E<sup>c</sup> by land of William Doubs, so called and hath such shape form and marks as the above Plat Represents



Surveyed 19<sup>th</sup> May 1785

Recorded 27 July 1785

by D<sup>r</sup> Hopkins D<sup>r</sup>