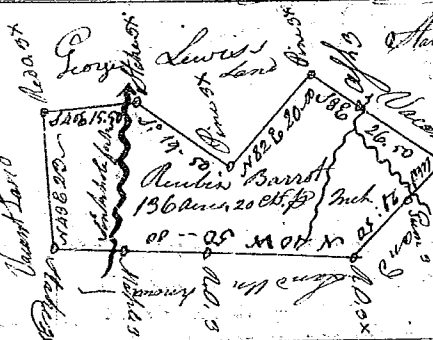
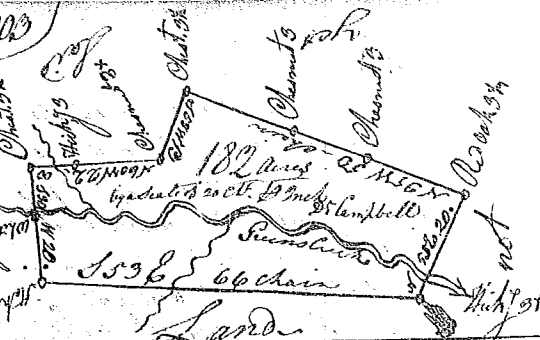
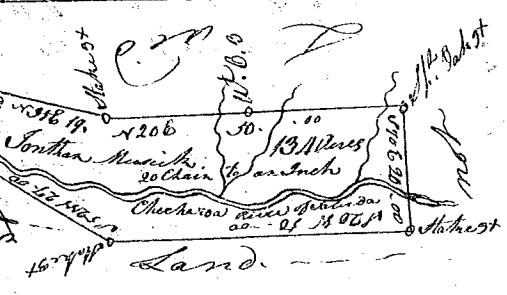


State of South Carolina Pursuant to a Warrant from (203)  
 John Thomas Esq. Com. of Locat. dated the 30th June 1785. I have admeasured  
 & laid out unto John Thomas Esq. a tract of one hundred  
 & eighty two acres of land situated in 96 District S. of Saluda  
 446 of the old Boundary on both sides of Grand Creek of old  
 District above, all being vacant land & hath such shape  
 & marks as the annexed plat represents being the 5th July 1785  
 Recorded this 12th August 1785

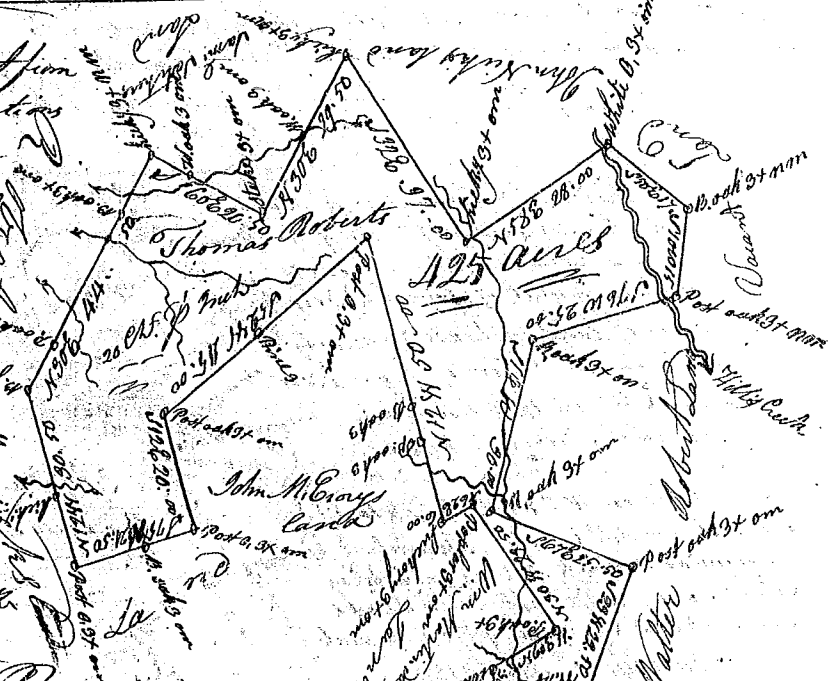


State of South Carolina  
 Pursuant to a Warrant from John Thomas Esq. Com. of Locations  
 dated the 30th June 1785. I have admeasured & laid out unto John  
 Barret a tract of 136 acres of land situated in 96 District on both  
 sides of a branch of Fortmumburgs River of the Yggar river, & hath  
 such shape marks & boundaries as the annexed plat  
 represents being the 6th June 1785. John Young Esq. Es.  
 Recorded this 12th August 1785

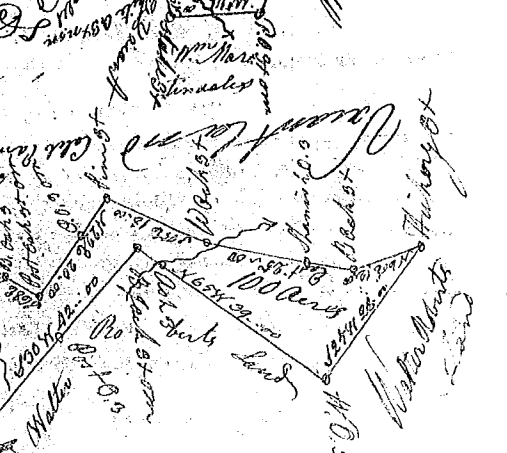
State of South Carolina, Pursuant to a warrant from John  
 Thomas Esq. Com. of Locat. dated the 25th April 1785, I have ad-  
 measured & laid out unto Jonathan Murick a tract of one hundred  
 & thirty four acres of land situated in 96 Dist.  
 on both sides of Checharoa River of Saluda, and  
 hath such shape marks & boundaries as the annexed plat represents  
 Surveyed the 25th April 1785  
 John Young Esq. Es.  
 Recorded this 12th August 1785



State of South Carolina  
 Pursuant to a Warrant from  
 John Thomas Esq. Com. of Locations  
 in 96 District S. of Saluda  
 I have admeasured & laid out  
 unto Thomas Roberts a tract  
 of 425 Acres of land on Hills  
 Creek & branches of Johns Creek  
 of Union County bounded W. on Robert  
 Muricks land N. on Samuel  
 Satchers land & John Kirks land  
 E. on Walter Roberts & vacant land  
 S. on John McEnry's & land laid  
 out to William Martin's & I  
 hath such shape & marks as the  
 annexed plat represents  
 Surveyed the 13 July 1785



Recorded this 12th Aug. 1785  
 State of South Carolina. Pursuant to a Warrant  
 from John Thomas Esq. Com. of Locations in 96 District  
 S. of Saluda River. I have admeasured & laid out unto  
 Thomas Roberts a tract of one hundred acres  
 of land on the Dry Branch of Enore River in  
 Union County. Bounded W. on Walter Roberts  
 N. & S. on John McEnry's land all other sides Vacant  
 I hath such shape & marks as the annexed plat  
 represents Surveyed the 26 July 1785  
 Recorded the 12th Aug. 1785



Delivered to Thomas Roberts both the above tracts in his name