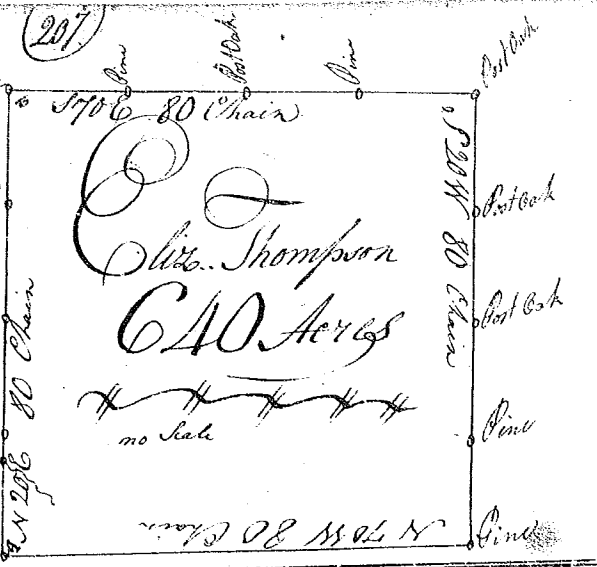
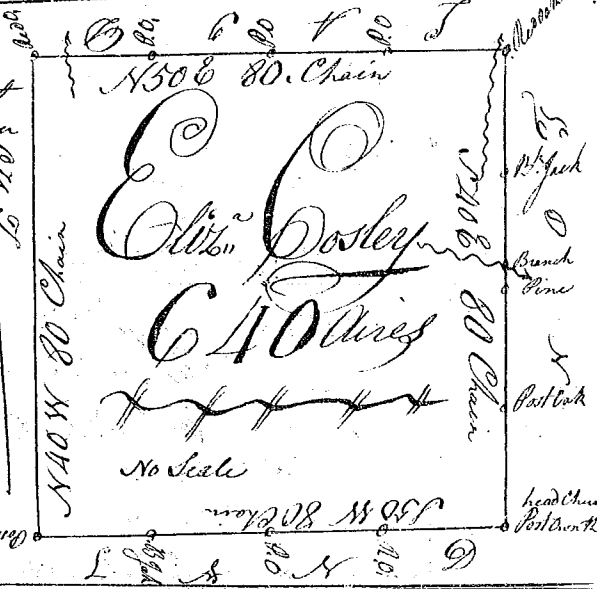


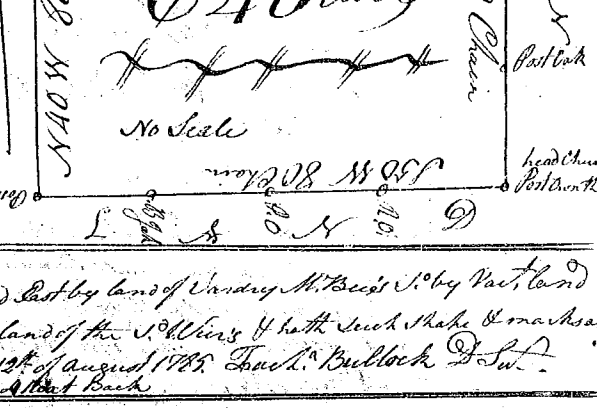
State of South Carolina Ninety Six District
 Pursuant to a Warrant from John Thomas Esq.
 Comr. of Locations Dated the 29th July 1785. I have
 admeasured & laid out unto Elizabeth Thompson
 a tract of Land containing Six Hundred & Forty
 acres situated in 96 District N. of Saluda
 on the Waters of Sars Creek a branch of Broad
 River. Bounded S. by land of James M. Bee's lot
 by Mary M. Bee's land, the other sides to the land
 of both such shape & marks as the annexed plat
 represents. Surveyed this 19th August 1785
 Recorded this 16th August 1785
 L. Bullcock D.S.



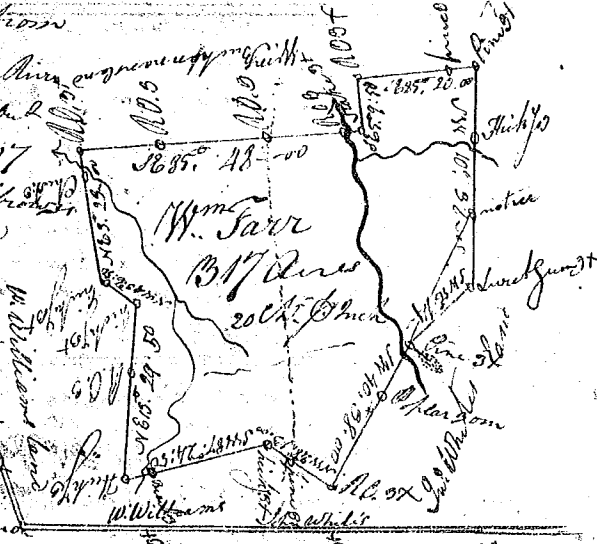
South Carolina Pursuant to a Warrant from John Thomas
 Esq. Comr. Locations Dated the 29th July 1785. I have
 admeasured & laid out unto Elizabeth Esley a tract
 of land on the Waters of such Waters of Broad river
 containing six Hundred & Forty acres, situated in 96
 N. of Saluda, Bounded on all sides on vacant land
 & hath such shape & marks as the annexed plat represents
 Surveyed this 19th August 1785. L. Bullcock D.S.
 Recorded the 16th August 1785



State of Carolina 96 District
 Pursuant to a Warrant
 from John Thomas Esq.
 Dated 26 July 1785. I have
 admeasured & laid out
 unto William Orr a tract
 of 50 acres of land on the
 Creek of Broad River situated in
 96 District N. of Saluda. Bounded East by land of Vandy M. Bee's S. by Vac. land
 West by lands of Matthew Setups & by land of the S. Millers & hath such shape & marks as
 the above plat represents. Surveyed this 19th of August 1785. L. Bullcock D.S.
 Recorded the 16th Aug. 1785. D. C. Sarr



State S. Carolina Pursuant to a warrant from
 John Thomas Esq. Comr. for 96 District N. of Saluda
 (Dated 8th July 1785. I have admeasured & laid out
 unto Wm. Sarr a tract of land containing 317
 acres. situated in 96 District on the waters of Broad
 River. & hath such shape marks & boundaries as
 the Annexed plat represents
 Surveyed the 9th Aug. 1785. Lewis D. Sarr
 Recorded 20th Aug. 1785. D. C. Sarr



State of S. Carolina Pursuant to a warrant
 from John Thomas Esq. Comr. for 96 Dist. N. of Saluda
 I have admeasured & laid out unto William Sarr
 a tract of land containing 192 acres. situated in the
 District of 96 on fishdam Creek of Broad River &
 hath such shape marks & boundaries as
 the Annexed plat represents. Surveyed 30 July 1785
 Recorded 20th Aug. 1785. Lewis D. Sarr
 D. C. Sarr

