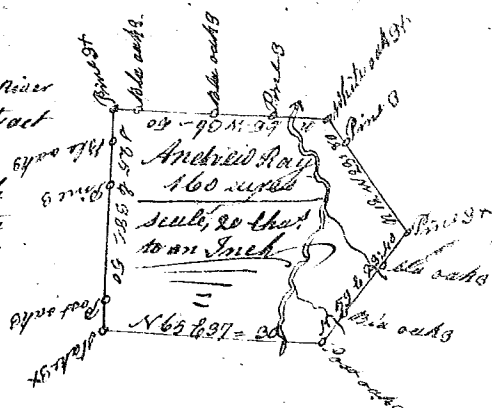


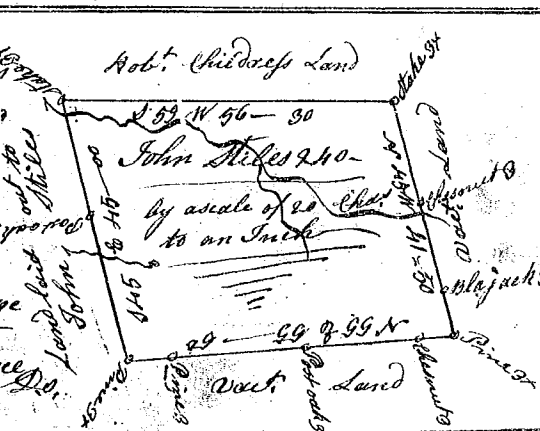
State of South Carolina Pursuant to a warrant from John Thomas Esq. Commissioner of locations N^o Saluda River I have admeasured and laid out unto Andrew Ray a tract of one hundred and sixty acres of land situate in 96th district on horse-creek of Broad River, and hath such bearing and bounding, and other shape & marks as the above Plat Represents, — Survey, the 24th June 1785. Recorded 16th Sept. 1785, by Rob^t. Prince Esq.



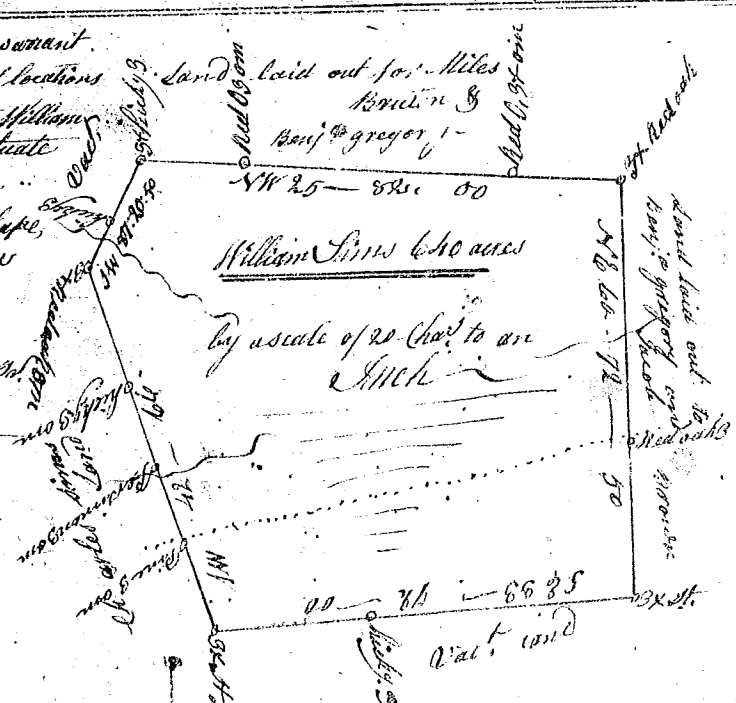
State of South Carolina Pursuant to a warrant from John Thomas Esq. Commissioner of locations for the District of Nine by N^o side Saluda River dated the 24th July 1785 I have admeasured & laid out unto Jesse Duncan a Tract of two hundred & 200 to five acres of land situate in Ninety six District North of Saluda River above the ancient line bounding on all sides as above mentioned. & hath such shape & marks as the above Plat Represents to Surveyed the 29th July 1785. Recorded the 16th Sept. 1785. John Hunter Esq. Delivered to Jesse Duncan.



State of South Carolina Pursuant to a warrant from John Thomas Esq. Commissioner of locations N^o of Saluda River I have admeasured and laid out unto John Miles a tract of two hundred and forty acres of land situate in Ninety six district, on a branch of the line of Sycor River West of the Indian boundary line, having and bounding, and such other shape and marks as the above Plat Represents. Survey, the 9th day of June 1785, by Rob^t. Prince Esq. Recorded the 17th Sept. 1785.



State of South Carolina Pursuant to a warrant from John Thomas Esq. Commissioner of locations I have admeasured and laid out unto William Sims a tract of 640 acres of land situate in Ninety six District, on Sth side of Broad River, and hath such shape, marks, form, bearings & bounding as the above Plat Represents, Survey, 22nd of Aug. 1785, by Charles Sims Esq. Recorded 19th Sept. 1785.



Dubin Robert Savage