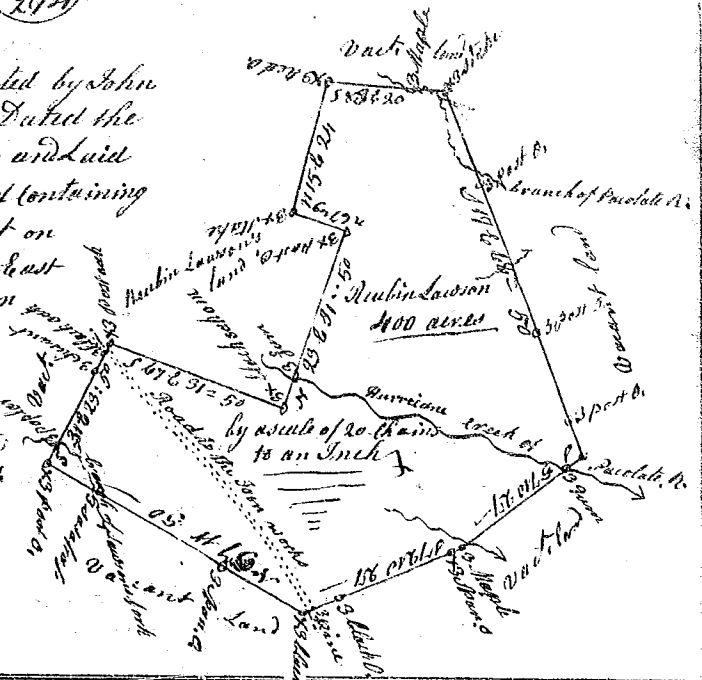


State of South Carolina,

Pursuant to a warrant granted by John Thomas Esq<sup>r</sup> Commissioner of locations Dated the 13<sup>th</sup> of August 1785, I have admeasured and laid out unto Reubin Lawson a tract of land containing 400 acres, situate in Ninety Six District on Hurricane Creek a branch of Pacolite River East of the Indian boundary line, bounded on the NW by lands belonging to J<sup>d</sup> Lawson and on all other sides by vacant lands, and hath such form and Marks as the above Plat Represents, SW<sup>th</sup> 13<sup>th</sup> Aug. 1785,

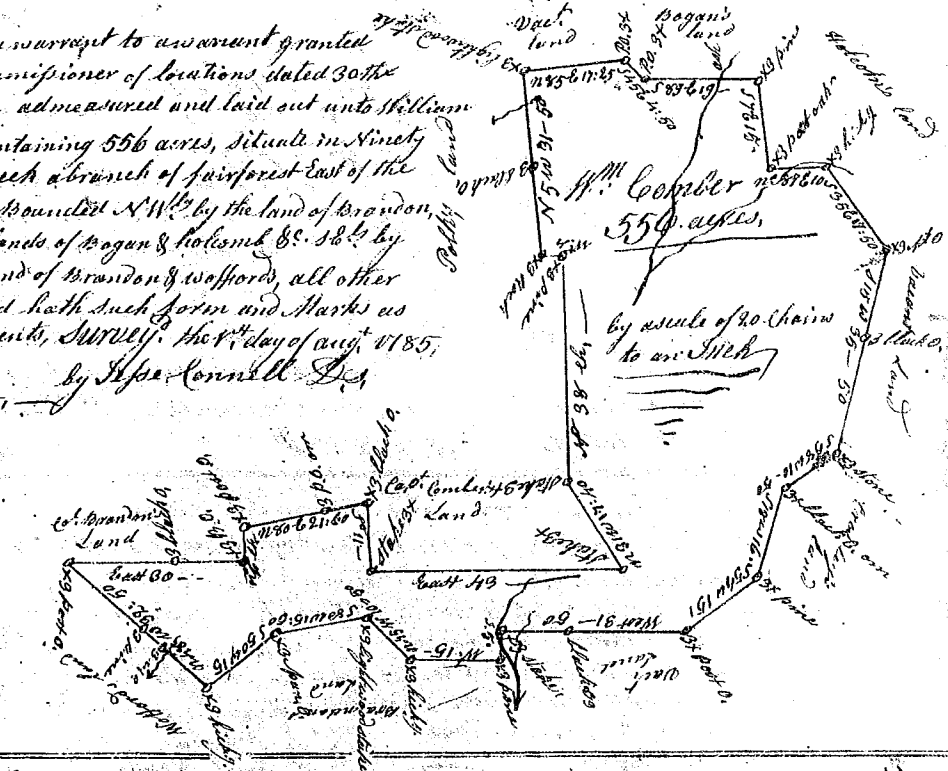
by J<sup>d</sup> Connell Esq<sup>r</sup>  
Recorded 21<sup>st</sup> Sept<sup>r</sup> 1785



South Carolina

Pursuant to a warrant to a warrant granted by John Thomas Esq<sup>r</sup> Commissioner of locations dated 30<sup>th</sup> day of July 1785, I have admeasured and laid out unto William Comber a tract of Land containing 556 acres, situate in Ninety Six District on Sholly Creek a branch of fairforest East of the Indian boundary line, bounded N.W. by the land of Brandon Comber & Pelt, N.E. by lands of Pagan & Holcomb E.S. S.E. by land of Croftly, S.W. by land of Brandon & Wofford, all other sides by vacant land, and hath such form and Marks as the annexed Plat Represents, SW<sup>th</sup> 30<sup>th</sup> day of Aug<sup>r</sup> 1785,

by J<sup>d</sup> Connell Esq<sup>r</sup>  
Recorded 21<sup>st</sup> day Sept<sup>r</sup> 1785



State of South Carolina,

Pursuant to a warrant from John Thomas Esq<sup>r</sup> Commissioner of locations dated the 1<sup>st</sup> day of Aug<sup>r</sup> 1785, I have admeasured and laid out unto Jeremiah Daws a tract of land of one hundred and one acres, situate in 96 District N<sup>o</sup> of Saluda below the Indian boundary, on the East branches of Middle Tigger River all sides on vacant land, and hath such shape and Marks as the above Plat Represents, SW<sup>th</sup> 1<sup>st</sup> Aug<sup>r</sup> 1785, by J<sup>d</sup> Wittner Esq<sup>r</sup>,

Recorded the 2<sup>d</sup> Sept<sup>r</sup> 1785



State of South Carolina Pursuant to a warrant from John Thomas Esq<sup>r</sup> Commissioner of locations in 96 District N<sup>o</sup> of Saluda River, I have admeasured and laid out unto William Young a tract of 67 acres of land, situate in 96 District on the waters of Tigger River, bounding S<sup>e</sup> on Edward Prince's land, NW on land laid out for John Bennett, all other sides on vacant land, and hath such shape and Marks as the above Plat Represents, SW<sup>th</sup> 21<sup>st</sup> Sept<sup>r</sup> 1785,

Recorded 21<sup>st</sup> Sept<sup>r</sup> 1785

by W<sup>m</sup> Jarlson J<sup>d</sup>

