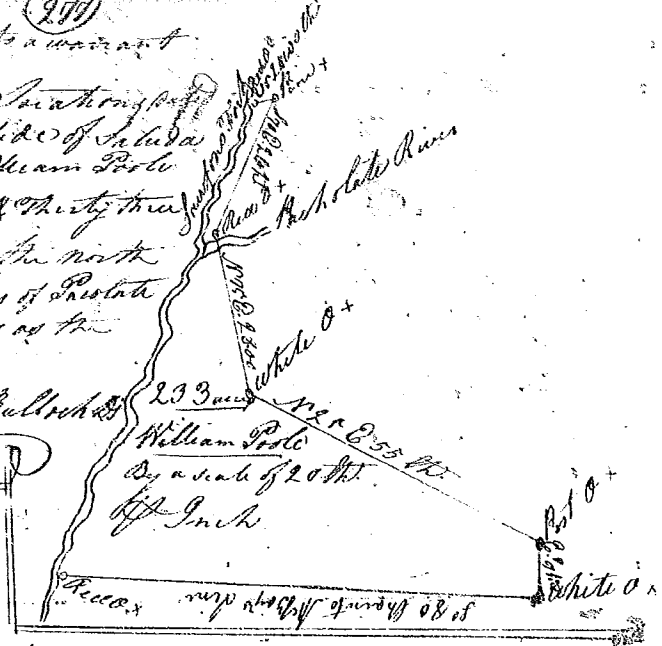
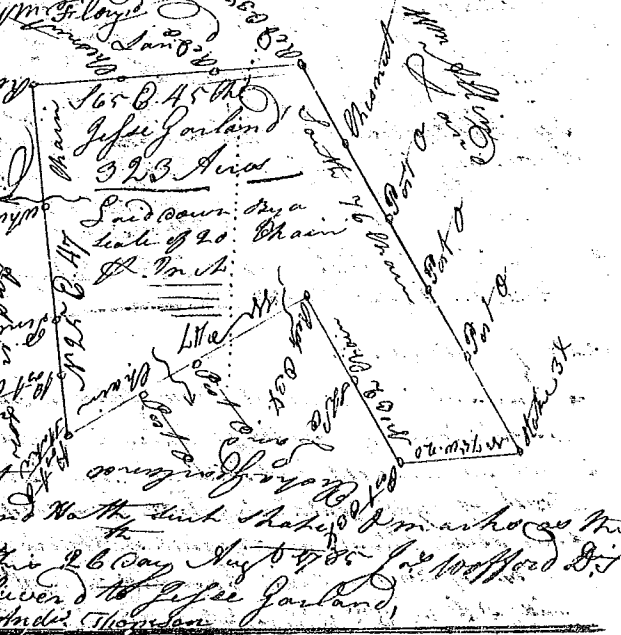


State of South Carolina pursuant to a warrant
 from John Thomas Esq. Commissioner of Location
 for Ninety Six District on the North side of Saluda
 I have measured & laid out to William Poole
 a Tract of Land containing Two hundred & Thirty three
 Acres situate in Ninety Six District on the north
 side of a low long fork and both sides of Prestate
 River and hath such shape and marks as the
 above Plat Represents
 Surveyed July the 19th 1785 Lach. Bulloch
 Recorded the 21st Sept. 1785



State of South Carolina Ninety Six District on the
 East side of the ancient Boundary Line Pursuant
 to a warrant from John Thomas Esq. Commissioner
 for the North side of Saluda River in Ninety Six
 District bearing date July the 19th Day 1785 I have
 measured & laid out to Daniel Jackson a Tract of Land containing
 Sixty Acres situate on the south side of a Branch of Broad
 River bounded Northwardly by James on his Land and westwardly by Hugh Means
 Land & southwardly by the said Daniel Jackson's Land and such shape &
 Marks as the above Plat Represents Surveyed the 29th Day of July 1785
 Recorded the 22nd of Sept. 1785
 Delivered to Wm Lancaster Andrew Thomson Esq.

State of South Carolina Ninety Six District North of Saluda East of the
 Old Boundary Line Pursuant to a warrant from John Thomas Esq.
 Commissioner of Location dated the 29th of
 Aug. 1785 I have measured and
 laid out to Jesse Garland a Tract
 of Land containing Three hundred & twenty
 three Acres situate on the Branch
 the north fork of Frogmore Creek the
 waters of Frogmore being of some growth
 by your Honors Land & bounds East by
 Allen Land & bounded southwardly by
 Clasha Jones Land & bounded west
 wardly by David Anderson's Land and hath such shape & marks as the
 above Plat Represents Surveyed the 26th Day Aug 1785
 Recorded the 22nd of Sept. 1785 Delivered to Jesse Garland
 Andrew Thomson



State of S. Carolina Pursuant to a warrant from John Thomas
 Commissioner of Location in Ninety Six District on Saluda River
 I have measured and laid out unto Richard Joy, a tract
 of land containing Two hundred and one acres situate
 on the north side of Prestate River on James's branch, bounded
 S on land belonging to Archibald Bulloch, E on land of Janet
 Little John N on land of Henry Little John, W on land of
 Jack Bulloch, and hath such shape and Marks as the
 above Plat Represents Surveyed 29 July 1785 Lach. Bulloch Esq.
 Recorded the 22nd Sept. 1785

