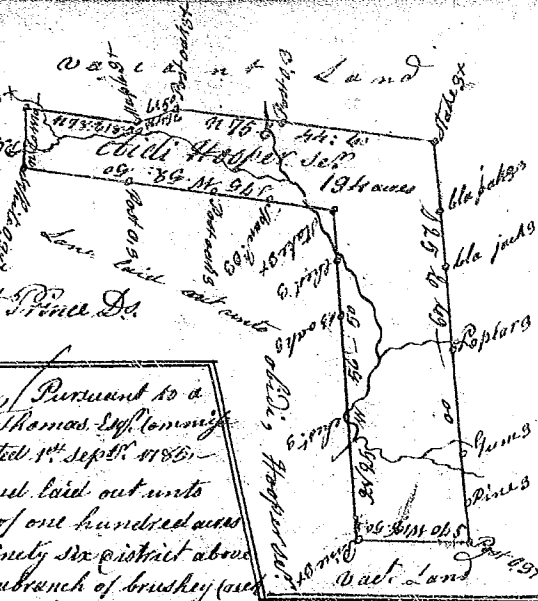


State of South Carolina,

Pursuant to warrant from John Thomas Esq<sup>r</sup> Commissioner of locations dated 4<sup>th</sup> July Saluda river, I have admeasured and laid out unto Obedia Hooper set a tract of one hundred and ninety four acres of land, situate in 96 District on the waters of Saluda River, and hath such shape, marks, buttings and boundings as the above Plat represents, Surveyed 5<sup>th</sup> Aug<sup>r</sup> 1785 by Rob<sup>t</sup> France D<sup>y</sup>  
Recorded the 30<sup>th</sup> Sept<sup>r</sup> 1785

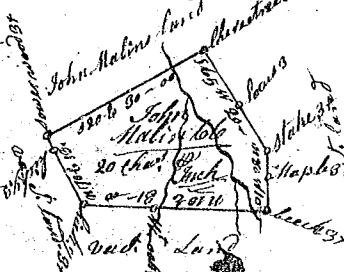
1785



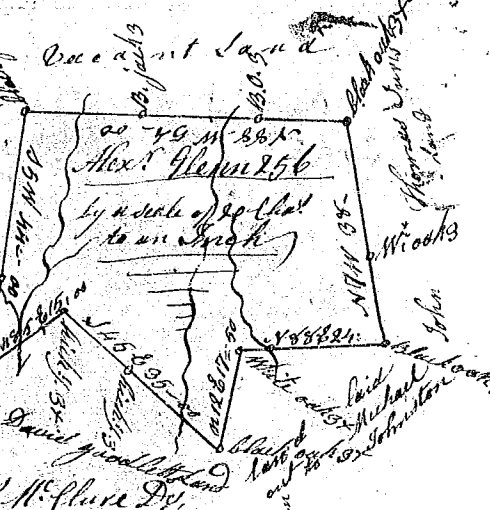
State of South Carolina, Pursuant to a warrant from John Thomas Esq<sup>r</sup> Commissioner of locations dated 1<sup>st</sup> Sept<sup>r</sup> 1785, I have admeasured and laid out unto Moses Kemp a tract of one hundred acres of land, situate in ninety six District above the old boundary, on a branch of brushy creek of Snow River, and hath such shape, marks, buttings and boundings as the above Plat represents, Surveyed 14<sup>th</sup> Sept<sup>r</sup> 1785, J. Whitner D<sup>y</sup>,  
Recorded 30<sup>th</sup> Sept<sup>r</sup> 1785,



State of South Carolina, Pursuant to a warrant from John Thomas Esq<sup>r</sup> Commissioner of locations, Dated the 30<sup>th</sup> Aug<sup>r</sup> 1785, I have admeasured and laid out unto John Malin a tract of sixty six acres, situate in 96 District on a branch of the Charon waters of Saluda River, and hath such shape, marks, buttings and boundings as the above Plat represents, Surveyed 1<sup>st</sup> day of September 1785, by John Young Sur<sup>r</sup> D<sup>y</sup>  
Recorded 30<sup>th</sup> Sept<sup>r</sup> 1785,



State of South Carolina 96 Dist<sup>r</sup> Pursuant to a warrant from John Thomas Commissioner of locations, 4<sup>th</sup> of Saluda River above the Indian boundary, I admeasured and laid out unto Alexander Glenn, a tract of land containing two hundred and fifty six acres, situate on the waters of Neelys River, on a small branch call<sup>d</sup> Richland Creek bounding N<sup>W</sup> and S<sup>E</sup> on David Goodletts land, N<sup>E</sup> on Michael Johnsons land, N<sup>W</sup> on John Thomas Esq<sup>r</sup> land, all other sides on Vac<sup>t</sup> Land, and hath such shape and marks as the above Plat represents, Surveyed 24<sup>th</sup> Sept<sup>r</sup> 1785, by Jo<sup>h</sup>n McClure D<sup>y</sup>  
Recorded 1<sup>st</sup> Oct<sup>r</sup> 1785,



State of S<sup>c</sup> Carolina Pursuant to a warrant from John Thomas Esq<sup>r</sup> Commissioner of locations, I have admeasured and laid out unto Samuel Cooper a tract of 173 acres of land situate in Union County, 96 District below the ancient limits on the SW of Tiger River, and hath such shape, marks, buttings and boundings as the above Plat represents, Surveyed 1<sup>st</sup> Oct<sup>r</sup> 1785, Abel Pearson D<sup>y</sup>  
Recorded 3<sup>rd</sup> Oct<sup>r</sup> 1785,



State of South Carolina Pursuant to a warrant from John Thomas Commissioner of locations, I have admeasured and laid out unto Samuel Cooper a tract of 140 acres of land situate in Union County & 96 District, below the ancient limits, on the N<sup>E</sup> side of Tiger River, and hath such shape, marks, buttings and boundings as the above Plat represents, Surveyed 1<sup>st</sup> Oct<sup>r</sup> 1785, Abel Pearson D<sup>y</sup>  
Recorded 3<sup>rd</sup> Oct<sup>r</sup> 1785,

