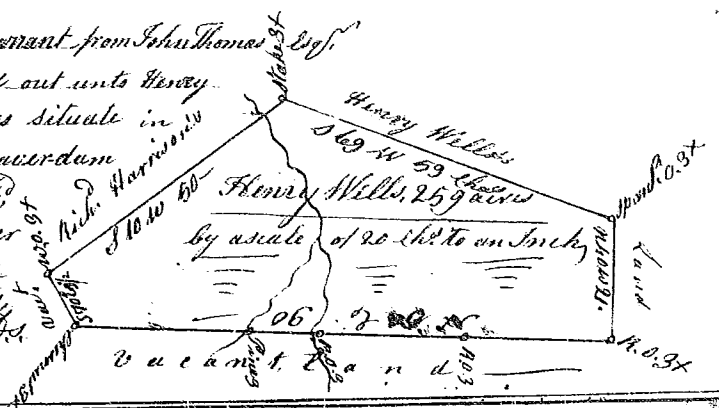
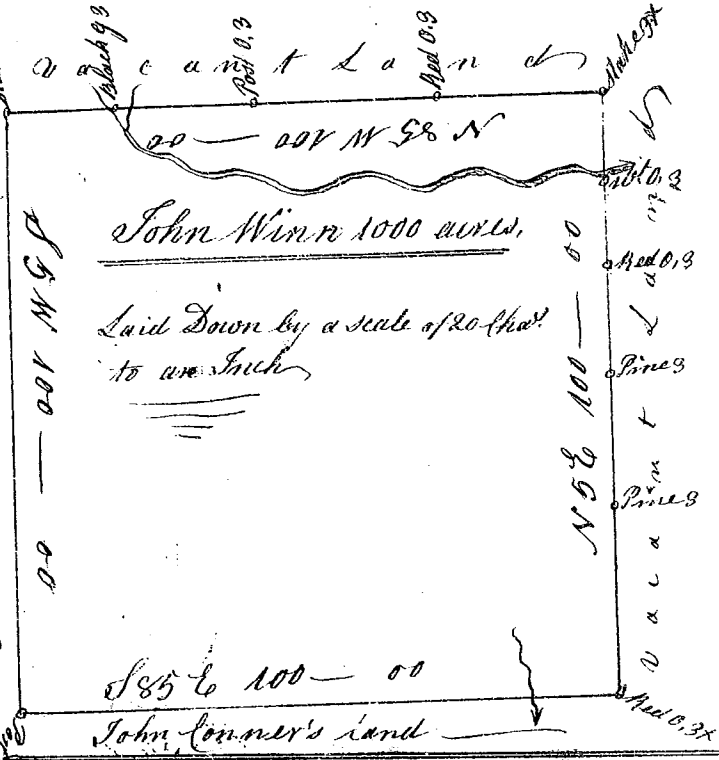


State of S<sup>c</sup> Carolina Pursuant to a warrant from John Thomas Esq.  
 Comm<sup>r</sup> of locations I have admeasured and laid out unto Henry  
 Wells a tract of land containing 259 acres situate in  
 Spartanburgh County on the waters of Beaverdam  
 Creek of Fair-forest, bounded S<sup>e</sup> by Rich<sup>d</sup>  
 Harrison's, S<sup>e</sup> by Henry Wells's, Every other  
 side by vacant Land, and has such shape  
 and marks as the above Plat represents,  
 Survey<sup>d</sup> 25<sup>th</sup> Oct<sup>r</sup> 1785, by Rich<sup>d</sup> Harrison Esq.  
 Recorded 23<sup>d</sup> Dec<sup>r</sup> 1785.



State of S<sup>c</sup> Carolina  
 Pursuant to a warrant from John  
 Thomas Esq. Comm<sup>r</sup> of locations  
 Dated the 8<sup>th</sup> day of Nov<sup>r</sup> 1785, I have  
 admeasured and laid out unto John  
 Winn a tract of one Thousand acres  
 of land, situate in Ninety Six dis-  
 trict, on both sides of a branch of Needy  
 river, and hath such shape, Marks,  
 buttings and boundings as the a-  
 bove Plat represents,  
 Survey<sup>d</sup> the 26<sup>th</sup> Nov<sup>r</sup> 1785,  
 by John C. Kilpatrick  
 Recorded 23<sup>d</sup> Dec<sup>r</sup> 1785.



State of South Carolina  
 Pursuant to a warrant from  
 John Thomas, Esq. Comm<sup>r</sup> of locati-  
 ons dated the 8<sup>th</sup> day of Nov<sup>r</sup> 1785, I have  
 admeasured and laid out unto John  
 Conner a tract of one Thousand acres  
 of land, situate in Ninety Six Dis-  
 trict, on both sides of Needy fork  
 of Needy river, and hath such shape,  
 Marks, buttings and boundings as  
 the above Plat represents,  
 Survey<sup>d</sup> 25<sup>th</sup> Nov<sup>r</sup> 1785,  
 by John C. Kilpatrick Esq.  
 Recorded 23<sup>d</sup> Nov<sup>r</sup> 1785.

