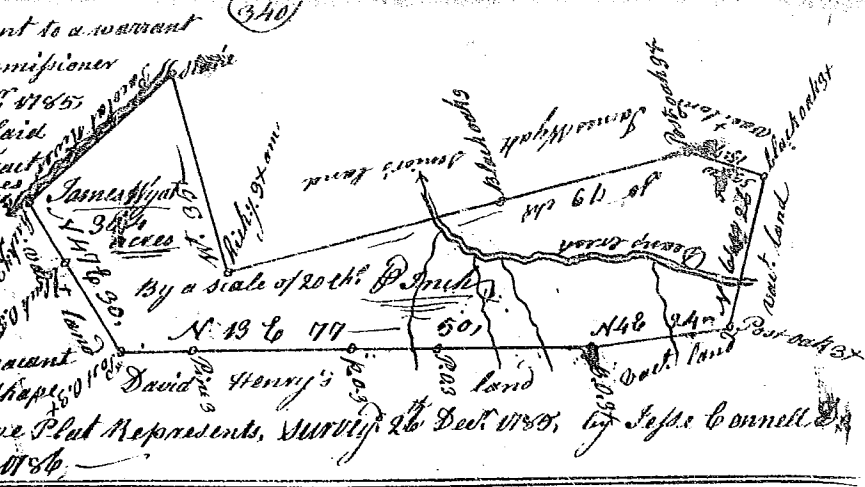
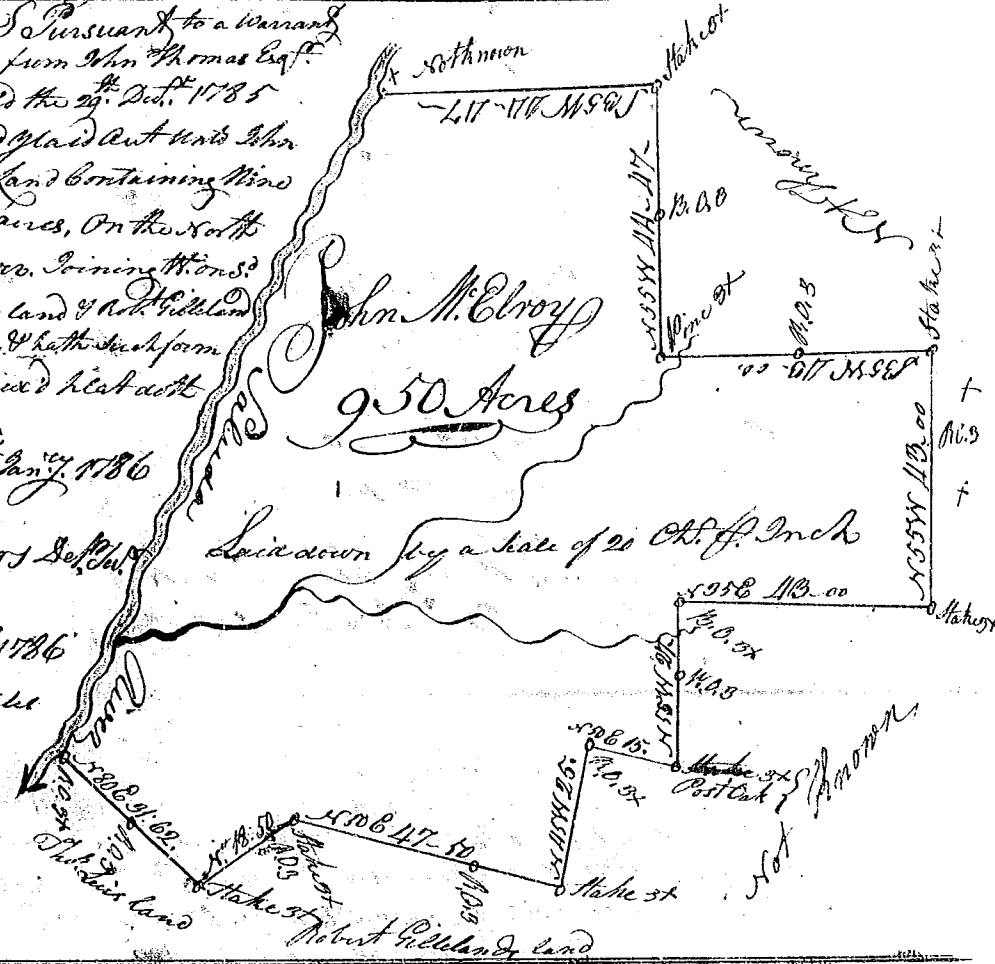


State of S. Carolina Pursuant to a warrant from John Thomas Esq. Commissioner of locations Dated 19<sup>th</sup> Dec. 1785 I have admeasured and laid out unto James Wyatt a tract of land containing 30 1/2 acres in 96 District on the East side of Picalat river, bounded N. by James Wyatt's land, E. by David Henry's land, all other sides by vacant land, and hath such shape and marks as the above Plat Represents, Surveyed 26 Dec. 1785, by John Cornell Esq. Recorded the 19<sup>th</sup> Jan. 1786



State of S. Carolina Pursuant to a warrant in 96 District from John Thomas Esq. Commissioner of locations dated the 29<sup>th</sup> Dec. 1785 I have admeasured and laid out unto John McElroy a tract of land containing nine hundred & fifty acres, on the North side of Saluda River, joining the N. S. River from the Lewis land & Robt. Hillman's N. E. land not known, & hath such form & marks as the annexed plat doth Represent Surveyed this 6<sup>th</sup> Jan. 1786



John Rodgers Esq. Surveyed this 6<sup>th</sup> Jan. 1786 Recorded 20<sup>th</sup> Jan. 1786 Dist. 96 of John Parvise

State of S. Carolina Pursuant to a warrant from John Thomas Commissioner of locations Dated the 24<sup>th</sup> Nov. 1785 I have admeasured and laid out unto William Hubbard a tract of fifty two acres of land in 96 District on waters of Broad River, and hath such shape, marks, cuttings & boundings, as the above Plat Represents Surveyed this 26<sup>th</sup> day of Novem. 1785 Recorded the 20<sup>th</sup> Jan. 1786 J. G. Wright Esq.

