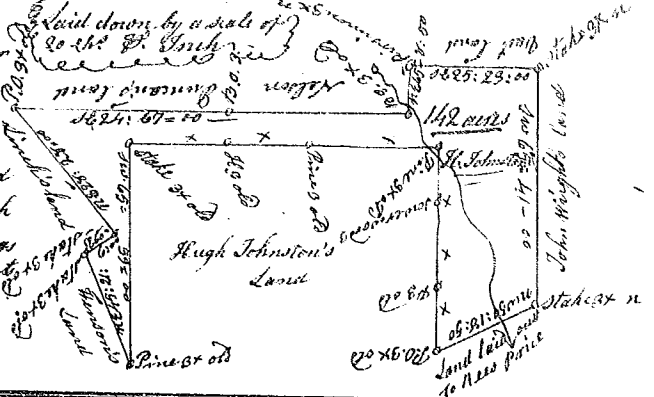
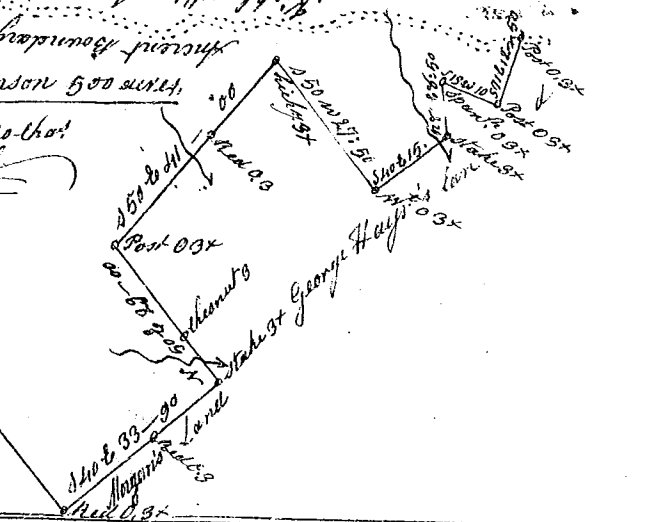


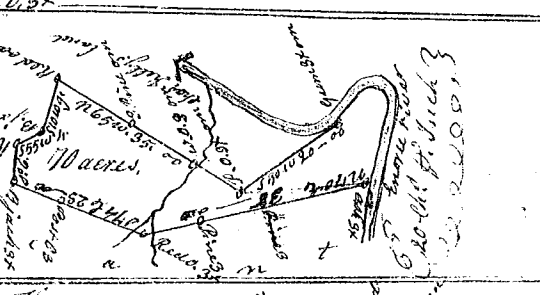
State of South Carolina,
 Pursuant to a warrant from John Thomas Esq.
 Dated 9. March 1786, I have admeasured
 and laid out unto Hugh Johnston a tract
 of one hundred and forty two acres of land
 in Ninety Six District, on waters of Bush
 River, and hath such shape, Marks, buttrees
 and boundings as the above Plat represents,
 Survey'd 11. March 1786, Joseph Wright Esq.
 Recorded 13. May 1786,



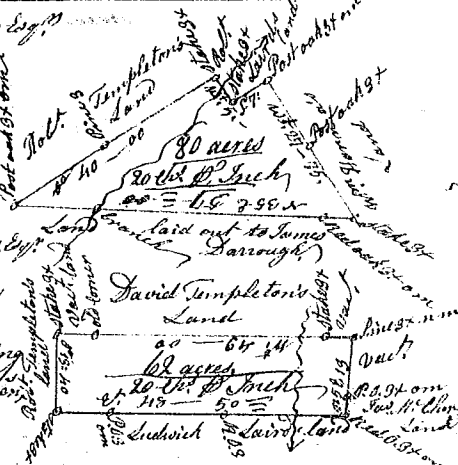
State of South Carolina
 Pursuant
 to warrant from John Thomas
 Commissioner of Locations, I
 have admeasured and laid out
 unto William Anderson a tract of
 five hundred acres of land, in Ninety
 Six District on the branches of Enoree river,
 and hath such shape, Marks, buttrees and
 boundings as the above Plat represents,
 Certified 3rd March 1786,
 Recorded 13th May 1786,
 by John Young Sur. D.



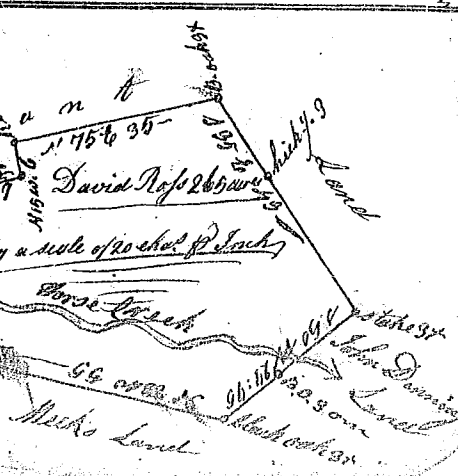
State of South Carolina Pursuant to a warrant from
 John Thomas Esq. Commissioner of Locations, I have admeasured and laid out
 unto John George a tract
 of seventy acres of land, on Enoree river in Union County,
 having such shape, Marks, buttrees & boundings
 as the above Plat represents, Survey'd 26. March 1786,
 Recorded 13th May 1786, by Robert Hanna Esq.



State of South Carolina Pursuant to a warrant from John Thomas Esq.
 Commissioner of Locations, I have admeasured and laid out
 unto Roger Brown a tract of eighty acres of land, on a small
 branch of Dunbars Creek in Laurens County, having such
 shape, Marks, buttrees & boundings as the above Plat represents,
 Survey'd 21. April 1786, Rob. Hanna Esq.,
 Recorded 13th May 1786,



State of South Carolina Pursuant to a warrant from John Thomas Esq.
 Commissioner of Locations, dated 28 Feb. 1786, I have admeasured &
 laid out unto Roger Brown a tract of sixty two acres of land,
 on a small branch of Dunbars Creek in Laurens County, having
 such shape, Marks, buttrees & boundings as in above Plat represents,
 Survey'd 28. April 1786, by Rob. Hanna Esq.,
 Recorded 13th May 1786,



State of South Carolina
 Pursuant to a warrant from John Thomas Esq.
 Commissioner of Locations & Salsuda River, I have
 admeasured and laid out unto George Rapp a tract of
 Two hundred and sixty five acres of land on Horse
 Creek a branch of Needy River above the line, having
 such shape, Marks, buttrees and boundings as
 the above Plat represents, Survey'd 26. Feb. 1786,
 Recorded 13th May 1786, Rob. Hanna Esq.

