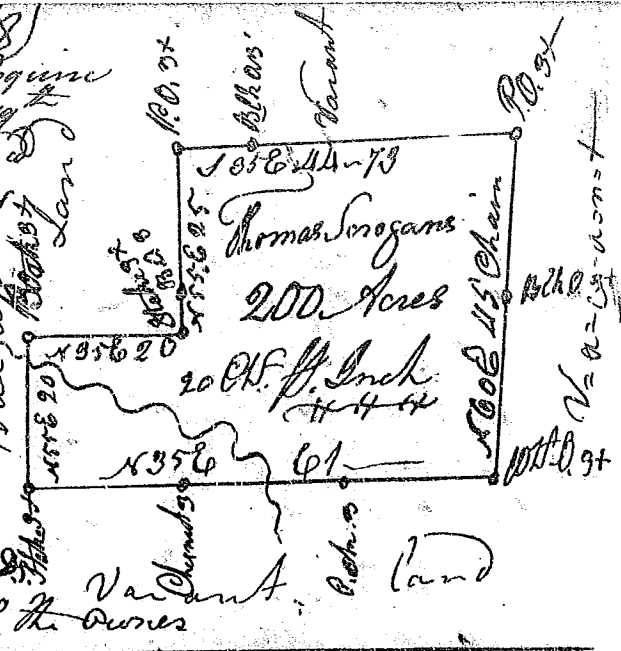


State Carolina Pursuant (28)  
 to a warrant from John Thomas Esquire  
 Commissioner of Locations Dated the 19<sup>th</sup>  
 Day of April 1786 I have admeasured  
 & laid out unto Thomas Ingrams  
 a tract of 200 Acres of land  
 above the ancient boundary  
 in 9<sup>th</sup> District. On brush Creek  
 waters of Saluda River. Bound  
 On all sides by vacant land  
 & hath such shape & marks  
 as the annexed plat represents  
 Surveyed this 25<sup>th</sup> April 1786  
 Recorded the 15<sup>th</sup> July 1786  
 Del. Peter Hair



S. Carolina State. Pursuant to  
 a warrant from John Thomas Esq  
 Dated the 19<sup>th</sup> June 1786. I have  
 admeasured & laid out unto  
 John Adam Summers, a tract  
 of 200 acres of land on the water  
 -ers of Crims Creek, a branch of  
 Broad River. & hath such shape  
 marks buttings & bounding  
 as the above plat represents



Certified the 1<sup>st</sup> July 1786  
 Recorded the 17<sup>th</sup> July 1786  
 State of S. Carolina Pursuant  
 to a warrant from John Thomas  
 Esq. Dated 19<sup>th</sup> June 1786, I have  
 admeasured and laid out unto  
 John Adam Summers a tract of  
 two Hundred acres of land on  
 the waters of big Creek a branch  
 of Saluda, 11<sup>th</sup> District, and  
 hath such shape, marks, buttings  
 and bounding as the above  
 Plat represents, Certified the 1<sup>st</sup> July 1786  
 Recorded 17<sup>th</sup> July 1786  
 Del. Peter Hair

