

State of S<sup>c</sup> Carolina,

Pursuant to a warrant from John Thomas, Com<sup>r</sup>. of locations dated 6<sup>th</sup> Jan<sup>y</sup>. 1787, I have admeasured and laid out unto George Hlaneigin tract of two hundred acres of land, on a branch of Neborns Creech, waters of Saluda River, bounded W<sup>ly</sup> by John Howards land, S<sup>ly</sup> by old lines

all other side Vacant Land, and hath such shape & Marks as the above Plat represents,

Recorded 22<sup>nd</sup> Febr<sup>y</sup>. 1787,

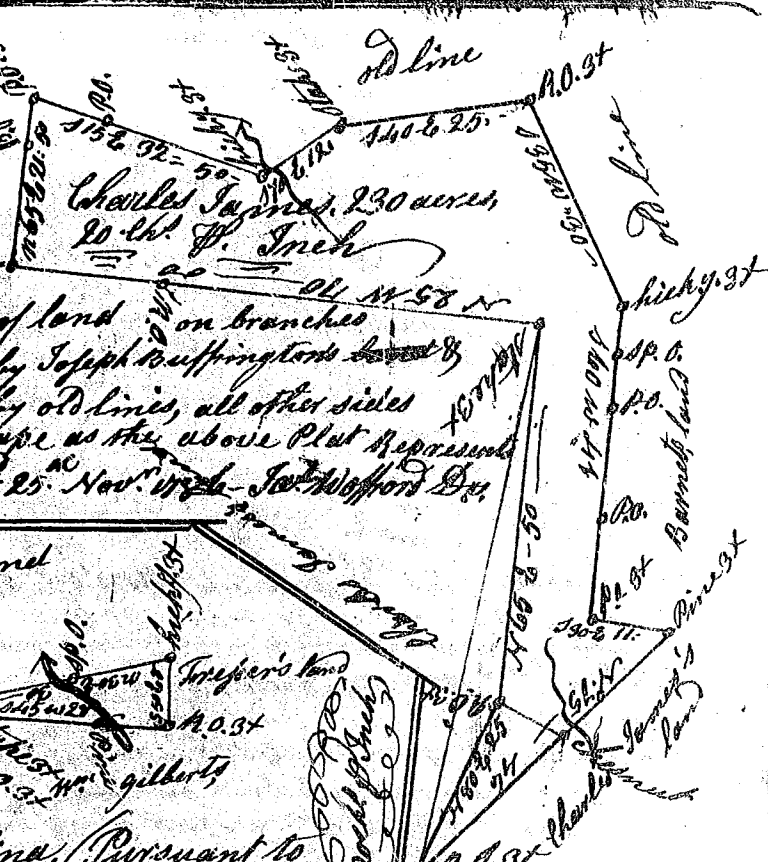


State of S<sup>c</sup> Carolina

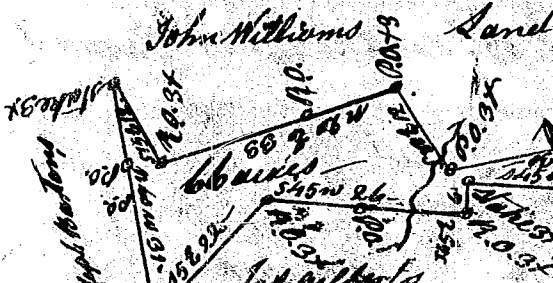
Pursuant to a warrant from John Thomas, Com<sup>r</sup>. of locations dated 24<sup>th</sup> Febr<sup>y</sup>. 1786, I have admeasured and laid out unto Charles

James a tract of 230 acres of land on branches of Fairforest, bounded W<sup>ly</sup> by Joseph Buffingtons land, Charles James land E<sup>ly</sup> by old lines, all other sides Vacant, and hath such shape as the above Plat represents,

Recorded 22<sup>nd</sup> Febr<sup>y</sup>. 1787, - Survey 25<sup>th</sup> Nov<sup>r</sup>. 1786 - Jas. Wofford Esq.



John Williams Land



State of S<sup>c</sup> Carolina, Pursuant to a warrant from John Thomas, Com<sup>r</sup>. of locations dated 1<sup>st</sup> Febr<sup>y</sup>. 1787 -

I have admeasured and laid out unto John Williams a tract of sixty six acres of land, on Darbins Creek waters of Enoree river, bounded S<sup>ly</sup> by John Williams land, W<sup>ly</sup> by Treasures land, N<sup>ly</sup> by 18<sup>th</sup> Gilbert and James Gilbert, N<sup>ly</sup> by So<sup>l</sup>. Wattons, and hath such shape & Marks as the above Plat represents,

Recorded 22<sup>nd</sup> Febr<sup>y</sup>. 1787, - Survey 6<sup>th</sup> Febr<sup>y</sup>. 1787, Jas. Wofford Esq.

