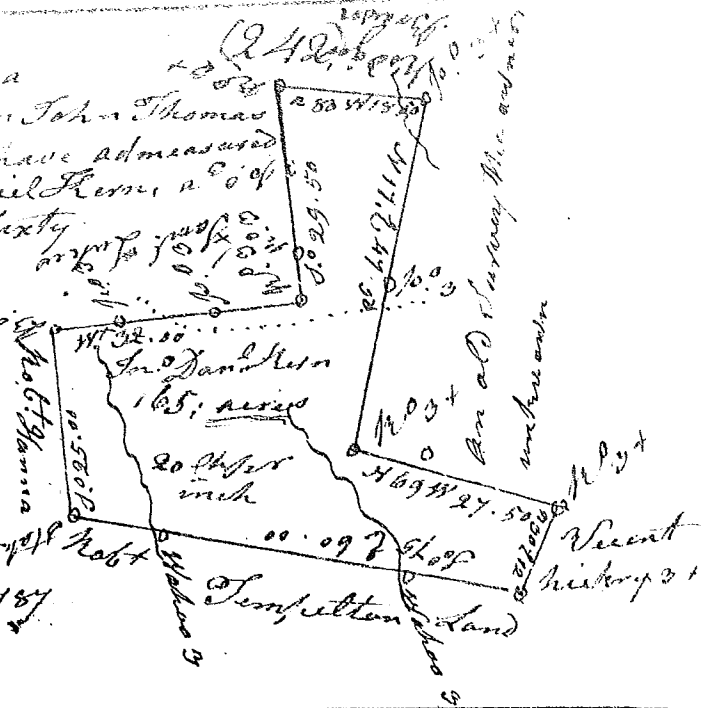


State of South Carolina

Pursuant to a warrant from John Thomas Esq. Comr. of Locations, I have admeasured and laid out unto John Daniel Kern a Co of Tract of Land Hundred and sixty five acres of Land on the Branches of Enore River

in Laurens County, having such Shape, marks, Buttings, and Boundings as the above Plat represents, - Surveyed

the 6th Day of July 1787
Robert Hanna D. S.
Recorded the 30th of August 1787

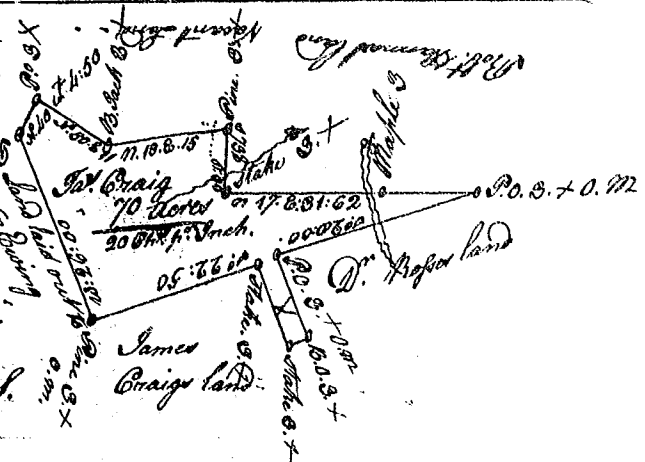


St. of S. Carolina. Pursuant to Warrant From John Thomas Esq. Comr. of Locations, I have Admeasured & Laid out unto James Craig a Tract of seventy Acres of Land on Duncan's Creek in Laurens County having such shape marks Buttings & Boundings as the Above plat represents -

Surveyed the 20th Day of July 1706.

Robert Hanna D. S.

Recorded 30th Aug 1707



State of South Carolina Pursuant to a Warrant from John Thomas Esq. Comr. of Locations N. Side a survey of Saluda Dated 31st Aug. I have Admeasured and laid out unto Adam Taylor a tract of one Hundred and seventy five Acres of Land Situate in Horry Six Sects on the N. Side of Saluda on the Wat. & on the

W. Side of Kiddy River and State such Shape, Marks Buttings and Boundings as the above Plat represents, Surveyed this 1st Day of Sept. 1787

By Thos W. Waterson D. S.
Recorded the 31st August 1787

