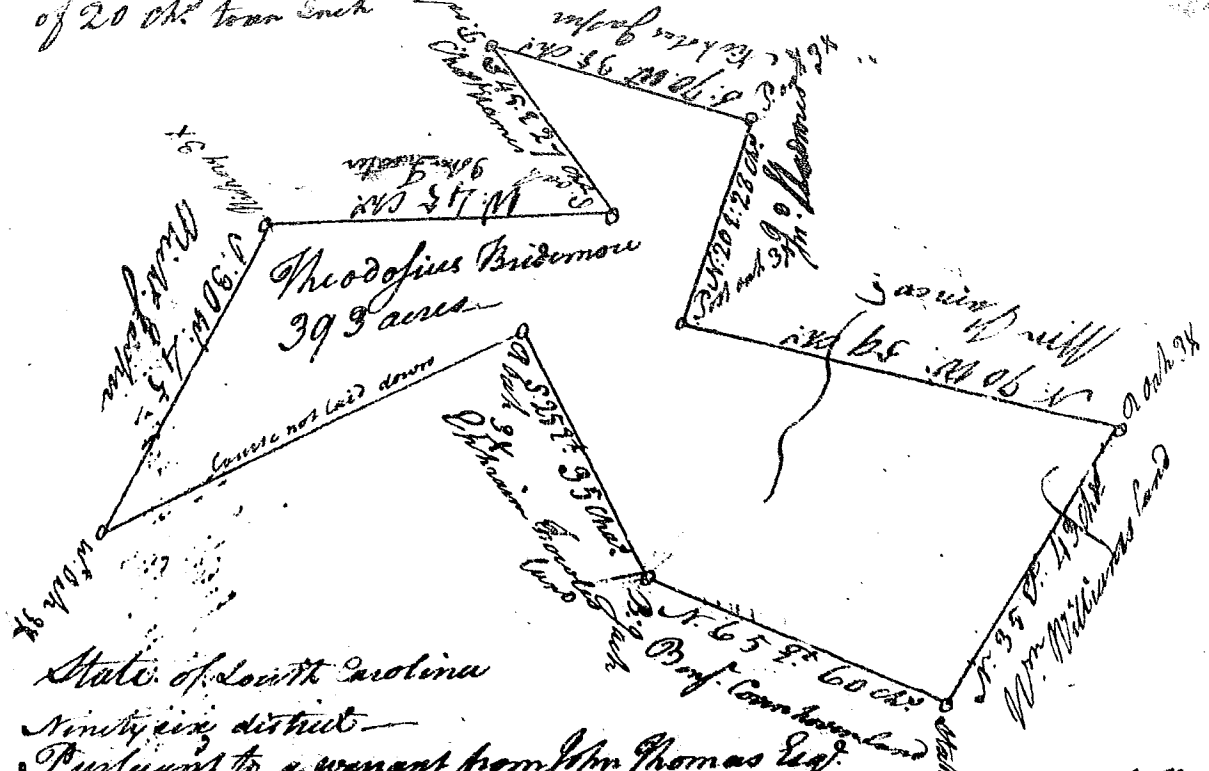


(230)

Laid down by a scale of 20 Ch^{rs} to an Inch

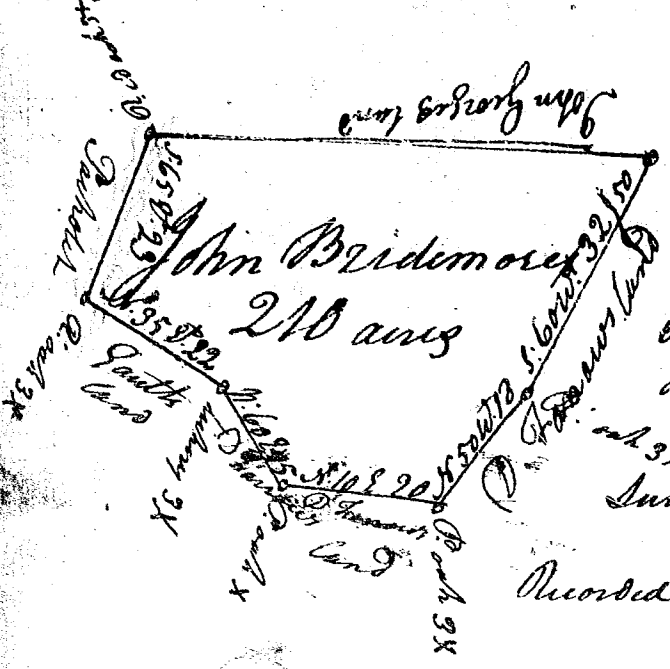


State of South Carolina

Ninety six district

Pursuant to a warrant from John Thomas Esq. Commissioner of Locations I have admeasured and laid out to Theodosius Bridemore a tract of 393 acres of land situate lying and being on the south side of Jacklet river in Union County. Bounded S. Eastwardly S. and South such shape form and other boundaries as the above plat represents. Survey'd 20th Novemb^r. 1797. T. Bullock D.S.

Recorded the 8th Decem^r. 1797. and del^d to J^r. Bridemore



South Carolina

Pursuant to a warrant from John Thomas Com^r. of Locations I have admeasured and laid out in to John Bridemore, a tract of 210 acres of land. lying and being in Union County. north side of Jacklet river and hath such shape form, and such marks as the above plat represents. Survey'd the 21st Novemb^r. 1797

T. Bullock D.S.
Recorded the 8th Decem^r. 1797 and del^d to J^r. Bridemore