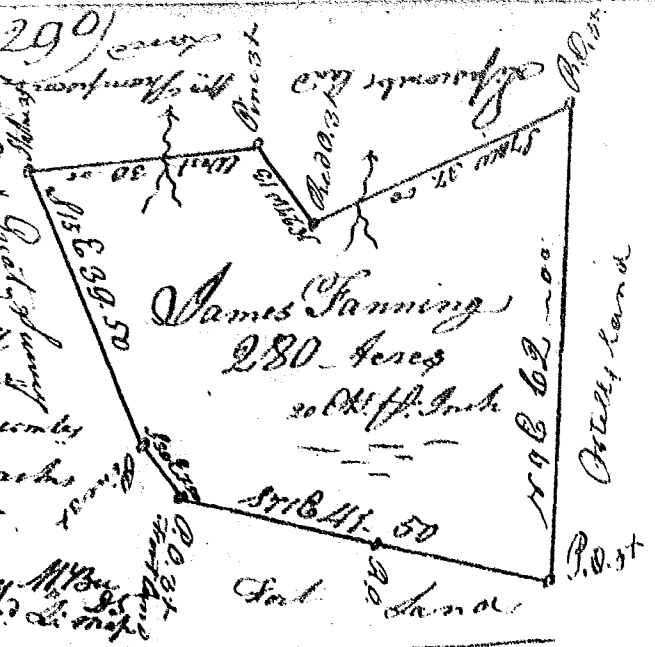


S. Carolina - Pursuant to (290) ^{copy}
 a warrant from John Thomas
 Esq. Com. Location for 96 Dist.
 No. of Saluda: I have admeasured
 and laid out unto James Fanning
 a tract of Two Hundred
 and Eighty acres of land, situate
 between the hills of Collier Creek
 bounded E. by Astells land & by
 the old fort land by a line sur-
 vey N. by Thompsons of adjacent
 lands, of both such compasses
 as the above plat represents.
 Surveyed the 26. July 1787
 Recorded the 15 Aug 1787 Del. J. M. B.



State of S. Carolina
 Pursuant to a warrant
 from John Thomas Esq. Com.
 in 96 District No. of Saluda
 Dated the 13. Sept. 1787. I have
 admeasured & laid out unto Benj.
 Barton a tract of 110 acres of
 land, situate on branches of
 Barton fork of S. Tyger river
 & a small C. of Middle Tyger
 river in Greenville County.
 and both such form & marks as the above plat represents.
 Surveyed the 13. Sept. 1787
 Recorded 7. Jan 1788 Del. the owner



State of S. Carolina Pursuant to a warrant from
 John Thomas Com. of locations dated 3. Oct.
 1787 I have admeasured and laid out unto
 James Johnston a tract of 29 acres of land
 in 96 District on the branches of Sandy run
 waters of Little river, waters of Saluda
 bounded by a line running S 4 E on Henry Pitts
 N 15 W on Benj. Cutlers land & by a line running S. 6 30 W on Parker
 above plat represents SURVEY. 10. Nov. 1787
 Recorded 9. Jan. 1788. Del. W. Blackburn

