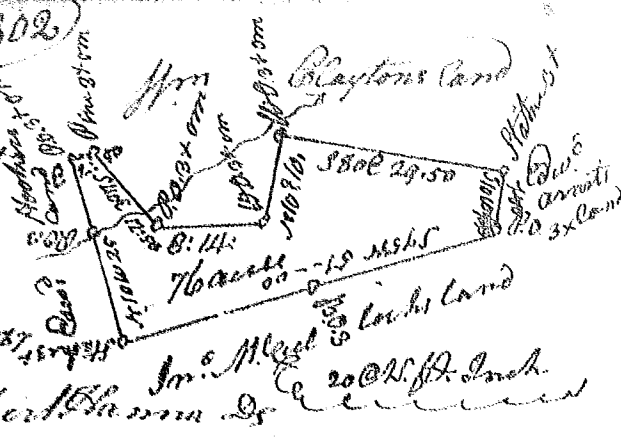


State of S. Carolina

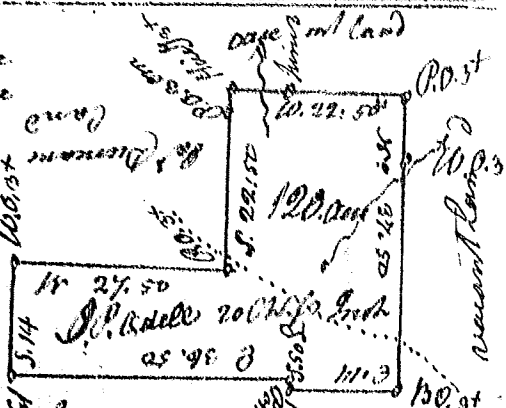
Pursuant to a warrant from John Thomas Esq. C. L. I have admeasured & laid out unto John Daniel Heron a tract of Seventy six acres of land on a branch of Sugar river in Spartanburg County and hath such form & marks as the above plat represents Survey the 11<sup>th</sup> Jan<sup>y</sup> 1787

(302)



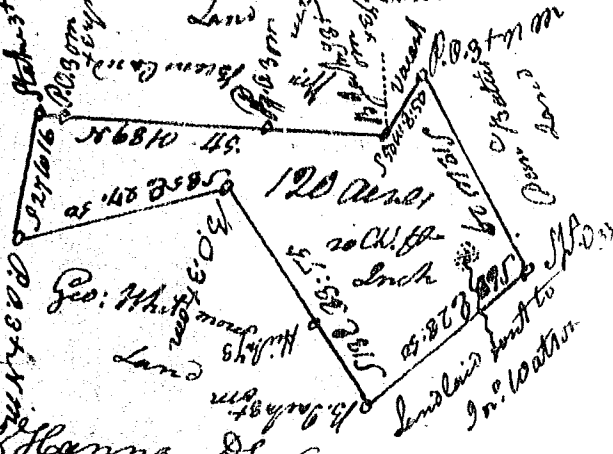
Recorded the 4<sup>th</sup> Feb<sup>y</sup> 1788 Robert Hanna Esq. Surveyor

S. Carolina Pursuant to a warrant from John Thomas Esq. Comin. Location. I have admeasured & laid out unto John Prather Odell a tract of 120 acres of land on the Branches of Duncan Creek in Laurens County having such form & marks, buttines & boundings as the above plat represents Survey the 29<sup>th</sup> Jan<sup>y</sup> 1787



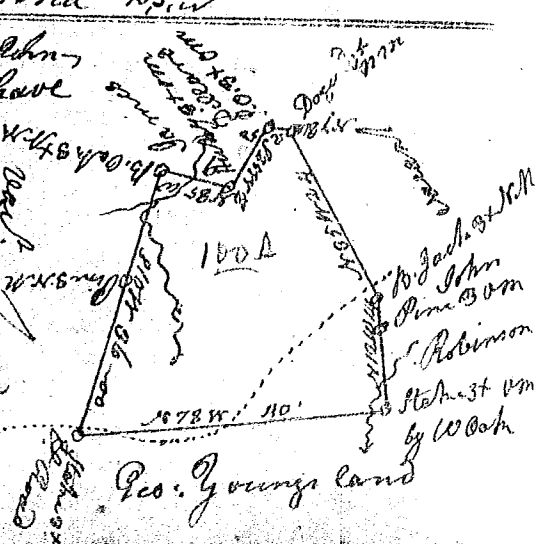
Recorded the 4<sup>th</sup> Feb<sup>y</sup> 1788 Robert Hanna Esq. Surveyor

State of S. Carolina Pursuant to a Warrant from John Thomas Esq. Comin. Location. I have admeasured & laid out unto John Prather Odell a tract of 120 acres of land on a small branch of Duncan creek in Laurens County having such form marks, buttines and boundings as the above plat represents Survey the 21<sup>st</sup> Jan<sup>y</sup> 1788



Recorded the 4<sup>th</sup> Feb<sup>y</sup> 1788 Robert Hanna Esq. Surveyor

S. Carolina Pursuant to a warrant from John Thomas Esq. C. L. of locations N. Saluda, I have admeasured and laid out unto George Young a tract of one hundred acres of land on a small branch of Enoree River in Laurens County having such shape, marks, buttines & boundings as the above Plat represents, Survey the 2<sup>nd</sup> Feb<sup>y</sup> 1788



Recorded the 4<sup>th</sup> Feb<sup>y</sup> 1788 Robt Hanna Esq. Surveyor