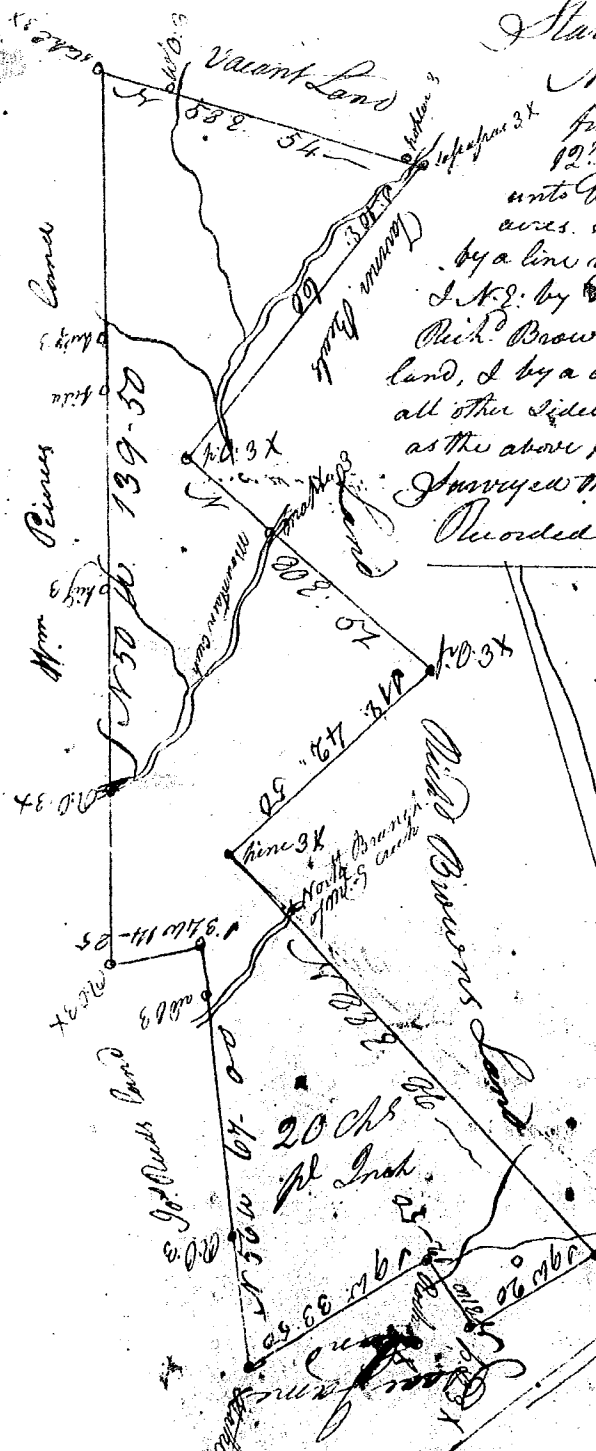


State of South Carolina

Pursuant to a warrant from John Thomas Esq. Com. of locations, dated the 29th Jan^y 1791. I have admeasured and laid out unto Benjamin a tract of six hundred & seven teen acres. On Mountain Creek waters of Saluda, bounded by a line running NW by land laid out for John Pierce Esq. S. N. E. by Taverner Beals land, by a line running S. E. to S. E. by Rich. Browns by lines running S. W. & N. W. on Isaac James land, & by a line running N. W. & N. E. on Joseph Beards land, on all other sides on vacant land. I hath such form & marks as the above plat Represents.

Surveyed the 2^d of January 1791. Benj^l Arnold Esq.
Recorded the 3^d of Jan^y 1791. D. D. to Geo. Martin



David McDowall Land



South Carolina

Pursuant to a warrant from John Thomas Esq. Com. of Locations, dated the 29th Novem^r 1790 I have admeasured & laid out unto Benjamin Stephens on a tract of fifty acres of land in 96 District, Charleston County, on South Back River, bounded N. E. & W. on Co. Dixons Land, & South on David McDowall Land, I hath such shape, form, and marks, as the above plat Represents.

Surveyed the 17th Jan^y 1791
Recorded the first day of Feb^y 1791
John Young Jun^r D. S.

State of S^c Carolina Pursuant to a warrant from John Thomas Esq. Commissioner of locations, dated 1st Dec^r 1790, I have admeasured and laid out unto James Waddleton a tract of eleven & three quarters acres of land situate in 96 dist^{ct} on waters of Back river, and hath such shape, marks, cuttings and boundings as the above Plat Represents,

Survey, 10th Dec^r 1790,

Jas Wright D.S.

Recorded 7th Feb^y 1791

