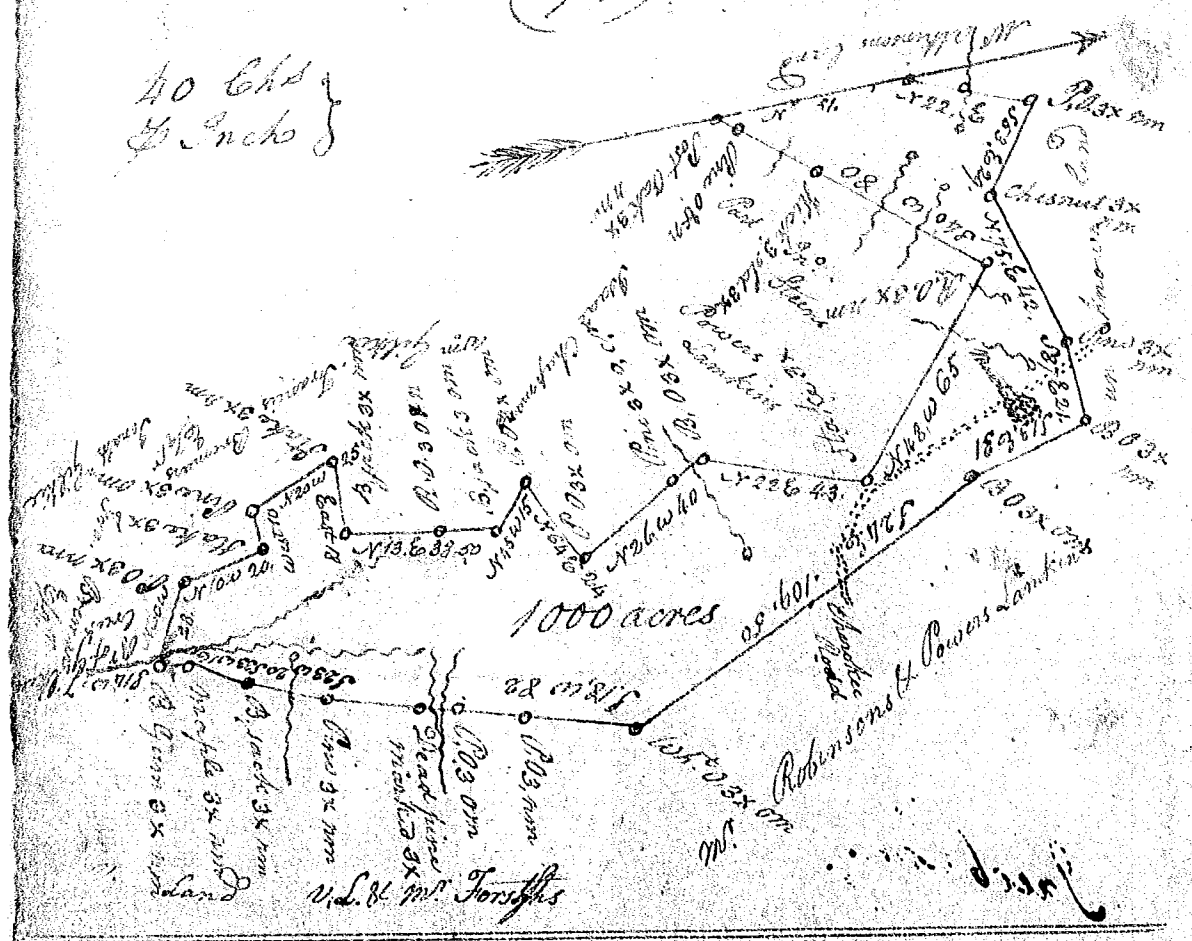


40 Chd
& Incks



St. of S. Carolina & Pursuant to a Warrant from John
 McKinney district of Thomas Esq. Dated the 28. Day of
 Sept. 1792. I have a do measure and laid out to Capt. Hugh
 Milling, a Tract of land containing one thousand Acres, more
 or less situate on the waters of Gilkeys Creek, London Bridge &
 abbions Creeks on Broad River. Bounded by Lines Running
 N. 80 E. by lands of Mr. Atkinson by Lines Running S. E. & S. E.
 by lands unknown by Lines Running S. E. by Mr. Robinson &
 Powers & Lambkins, by Lines Running S. W. by vacant land & Mr.
 Forrester's land, by Lines Running N. W. by Francis Bremar
 Esq. and Jonathan Gilkey's, by Lines Running N. W. E. & E.
 and S. W. by Francis Bremar Esq. and Jonathan Gilkey by
 Lines Running N. W. & N. E. by Isaac Chapman and
 hath such Shape & marks as the above plat

Represents
 Surveyed the 28. day of Sept. 1792
 Alex. Johnston D. S.