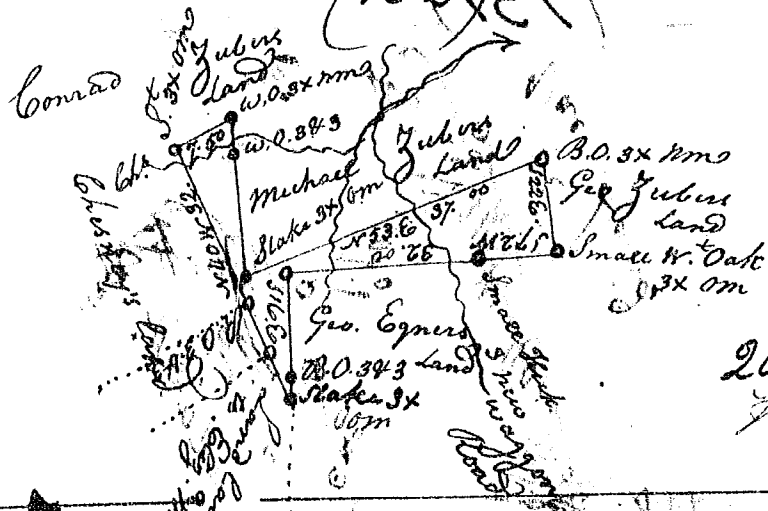
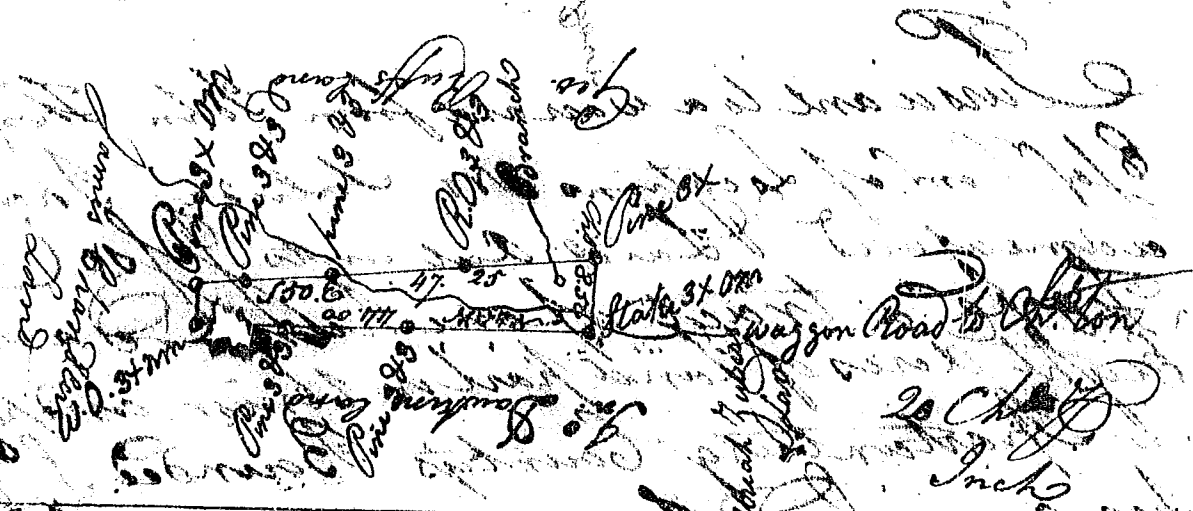


(132) 21



20 Chains
Inch

Carolina— Pursuant to a warr. from John Thomas Esq
Comr. of Locations N. Carolina dated the 11. April 1793 I have laid out
unto David Ruff & Co. a Tract of thirty One Acres of Land on the waters
of Hollers Creek, Newbury County, bounded S.E. & S.W. on Geo. Jubus
Geo. Egner, Eliz. M. Williams & Widow Chesneys Land N.E. & S.E.
on Michael Jubus Land & hath Shape and marks as the above
plat Represents. Surveyed the 22. May 1793
David Ruff D^r



20 Chains
Inch

Carolina Pursuant to a warr. from John Thomas
Esq Comr. of Locations I have laid out unto David
Ruff & Co. 30 acres of Land on a Branch of Broad River
Bounded N.E. & S.E. on Jas. Chantlers & Geo. Ruffs Land
S.W. & N.W. on David Jubus & John Darshins Land
and hath such Shape & marks as the above plat
Represents Surveyed the 22. May 1793

David Ruff D^r