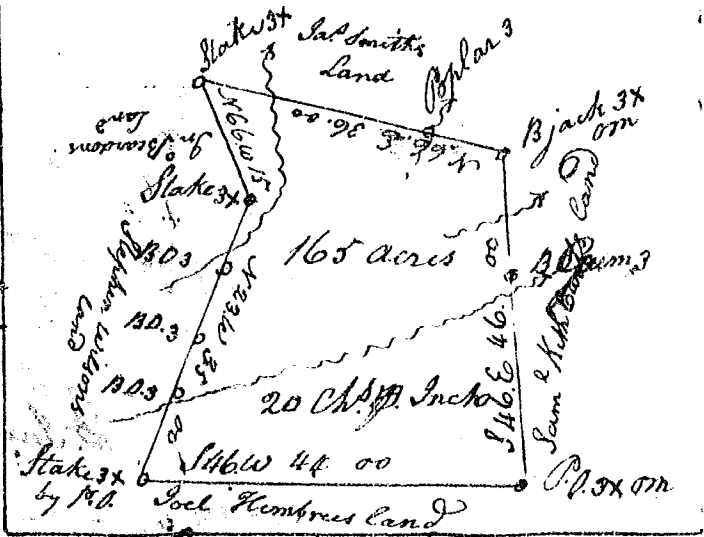
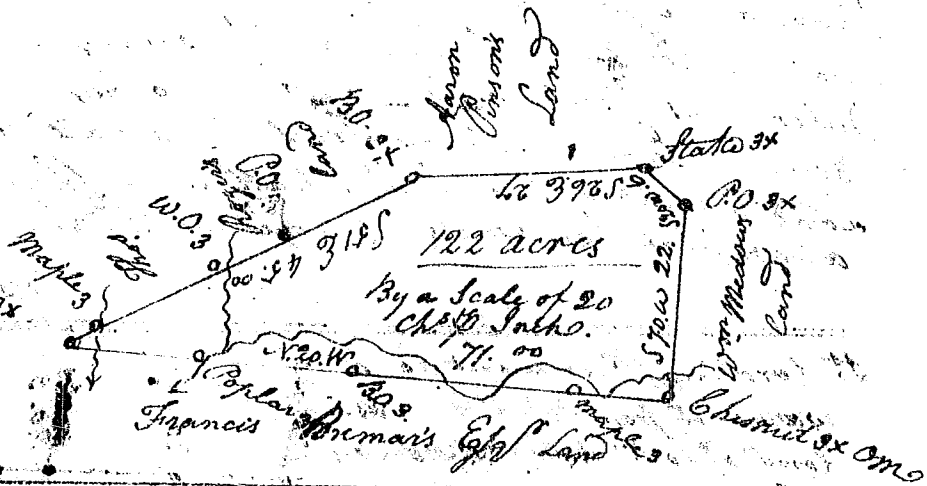


S<sup>c</sup> Carolina

Pursuant to a warrant from John Thomas Esq. Com<sup>r</sup> of Locations N<sup>o</sup>. Saluda dated 1<sup>st</sup> May 1793. I have admeasured & laid out unto Joel Hembre a tract of One hundred & Sixty five acres of Land on the small branches of Cane Creek of Tigger River in Spartanburg County (Bounding) S.W. on Sam<sup>l</sup>. Kithcarts land & Conjo<sup>r</sup> Smiths land & on John Beardens land and Stephen Wilsons land N.W. on the S. Joel Hembres Land and hath such Shape & marks as the above plat represents.



Surveyed the fiftenth day of May 1793. And<sup>o</sup>. Thomson Esq



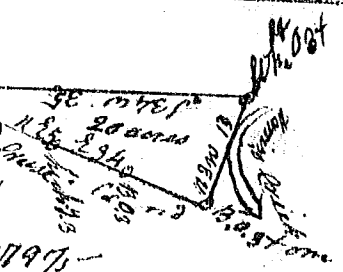
S<sup>c</sup> Carolina

Pursuant to a warrant from John Thomas Esq. Com<sup>r</sup> of Locations N<sup>o</sup>. Saluda Dated the 4<sup>th</sup> May 1793. I have admeasured and laid out unto Joel Hembre a tract of One hundred & twenty two acres of Land on the N<sup>o</sup>. side of Cane Creek of Tigger River in Spartanburg County. Bounded N.E. on Francis Bremar Esq<sup>s</sup> his land N. by Wm<sup>o</sup> Medsons land, Westerly by Aaron Consons Land, S.W. on Tho<sup>s</sup>. Rogers land & hath such Shape & marks as the above plat represents.

Surveyed the 16<sup>th</sup> day of May 1793.

And<sup>o</sup>. Thomson Esq

Pursuant to a warrant from John Thomas Esq. Com<sup>r</sup> of Locations N<sup>o</sup>. Saluda dated 1<sup>st</sup> Dec<sup>r</sup> 1797. I have admeasured and laid out unto George M<sup>r</sup>. Carter a tract of 20 acres of land in Spartanburg County S. & W. by said M<sup>r</sup>. Carter S.E. & N.E. by Ruth ... above plat represents.



Recorded 11<sup>th</sup> March 1799

Survey 20 Dec<sup>r</sup> 1797

Andrew Thomson Esq