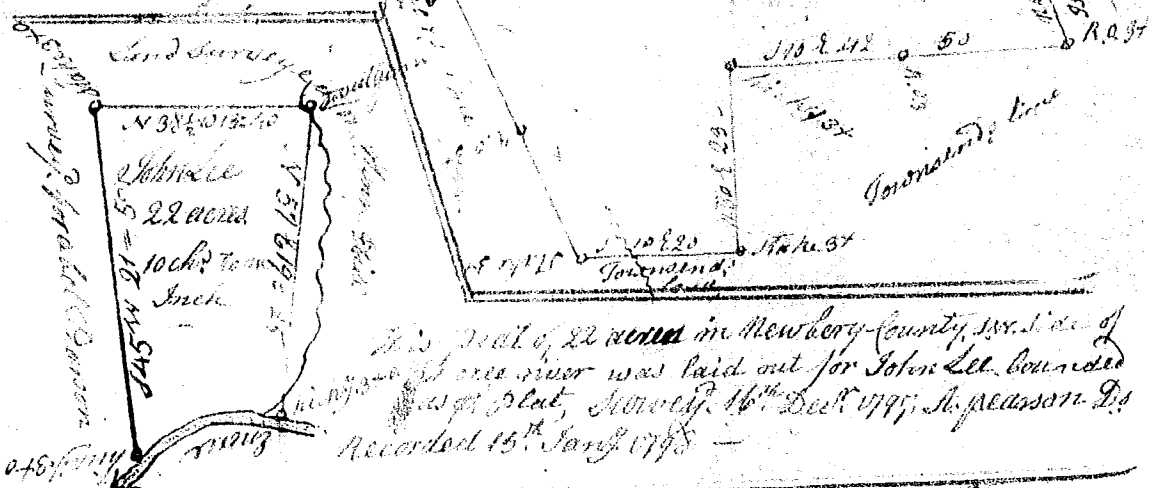
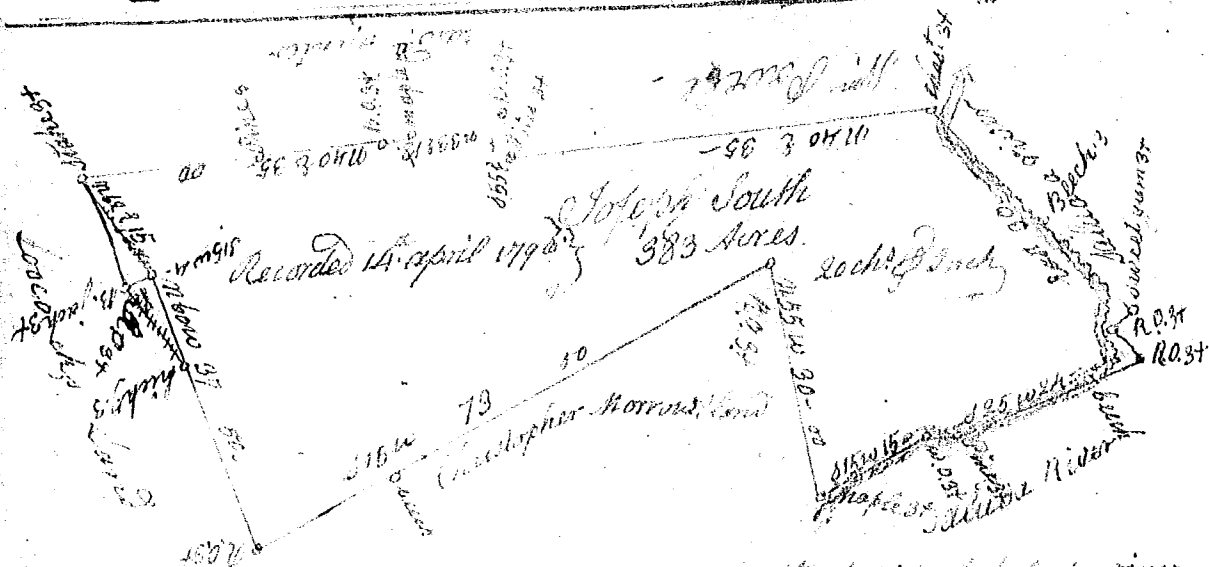


This was Survey for  
Edwin Porter by warrant  
no date - Survey 31<sup>st</sup> Jan<sup>y</sup>  
1795, by Charles Jones D<sup>s</sup>  
date of warrant 27 Jan<sup>y</sup> 1795



This plot of 22 acres in Newberry County, S.W. side of  
John Lee's river was laid out for John Lee, bounded  
as pt. Plat, Novemb<sup>r</sup> 16<sup>th</sup> Dec<sup>r</sup> 1795, M. Pearson D<sup>s</sup>  
Recorded 15<sup>th</sup> Jan<sup>y</sup> 1795



This plot of 383 acres was laid out on the S. side of Saluda river  
bounded as pt. Plat 13<sup>th</sup> April 1796 - by John Rodgers D<sup>s</sup>

This Plat of 310 acres on the waters of  
Commons Creek of Broad river -  
bounded as pt. Plat, survey 10 June  
1796. David Huff D<sup>s</sup>  
Recorded 20 June 1796 -

