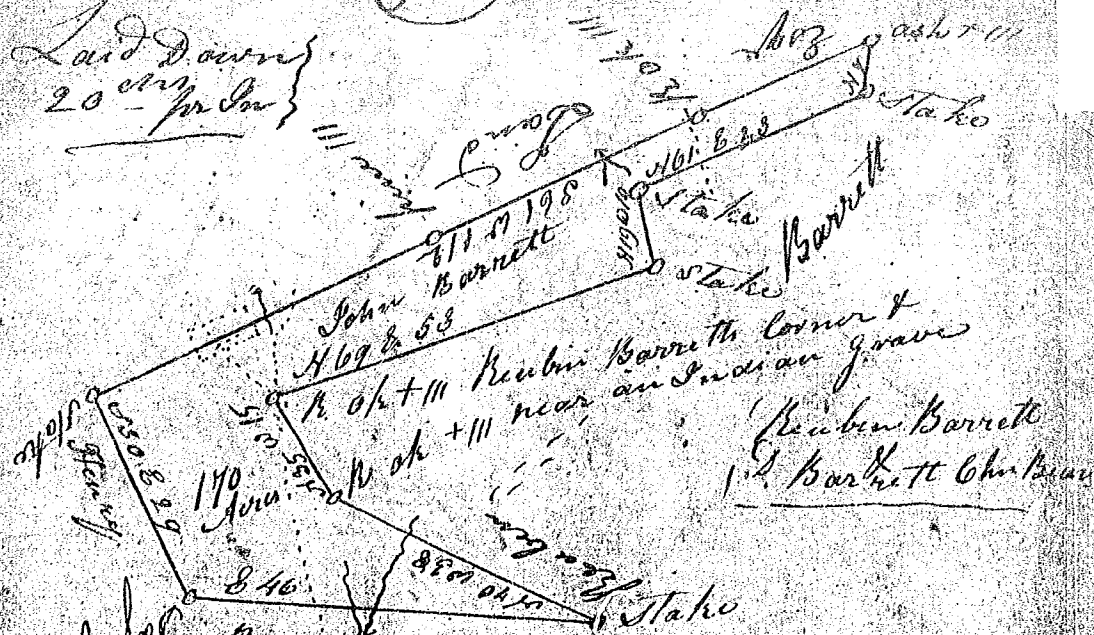


Laid Down  
20 - per Sec

(91)



Princess Land  
So Carolina } pursuant to a warrant from  
Wm. D. Thomas Esq. Comr. of Locations in the  
District of Greenville dated the 3<sup>rd</sup> february  
1814. I have Admeasured & laid out unto  
John Barrett a Tract of land containing  
One Hundred and Seventy acres, Situate  
in the said District on some Branches the  
waters of Tyger River, and on both sides of  
Packs Mountain, and bounded by a line  
running so E & E by land granted to  
Henry Prince & by lines running N. E. & N. W.  
& S. W. by land granted to Reuben Barrett Esq.  
and hath such Stake form & marks as the  
above plat represents, Surveyed the 28<sup>th</sup> febr  
1814 by ————— James Whitham

Recorded the 5<sup>th</sup> of August 1814  
Filed to Self