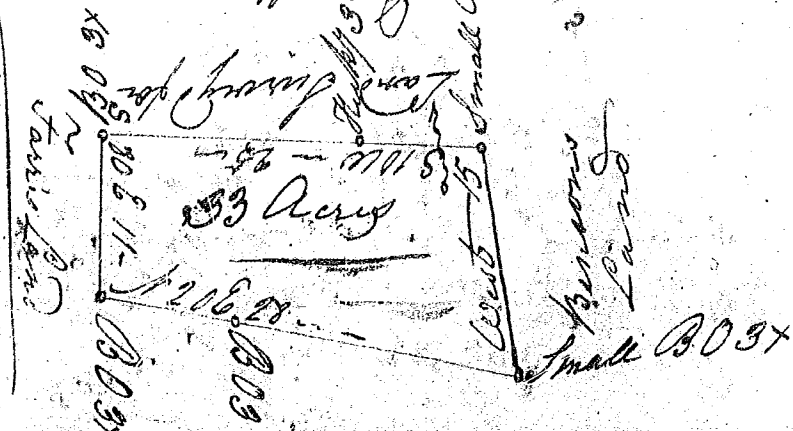


Scale ten Chs per Inch } 139,

John W. Young
John Young



Corn & Land
South Carolina

Pursuant to a warrant from John Young
Esq. Commr of Locations ~~and~~ the District
of Greenville dated the 14th day of Jan'y 1817
I have admeasured & laid out unto John
Winston a tract of Land containing thirty-
three Acres, situate in the District above
said, on a small branch of Saluda River,
bounded by a line running S 1/2 E by Lands surveyed
for Darnlee, S 1/2 E by Jane Land, N E by Carnis
Lands, West by Winston's Lands, and path such
form & marks as the above Plat represents,
Surveyed the 18th Day of Jan'y 1817 by

J. C. Austin Jr

Recorded the 13th day of March 1817 by

John Young CL