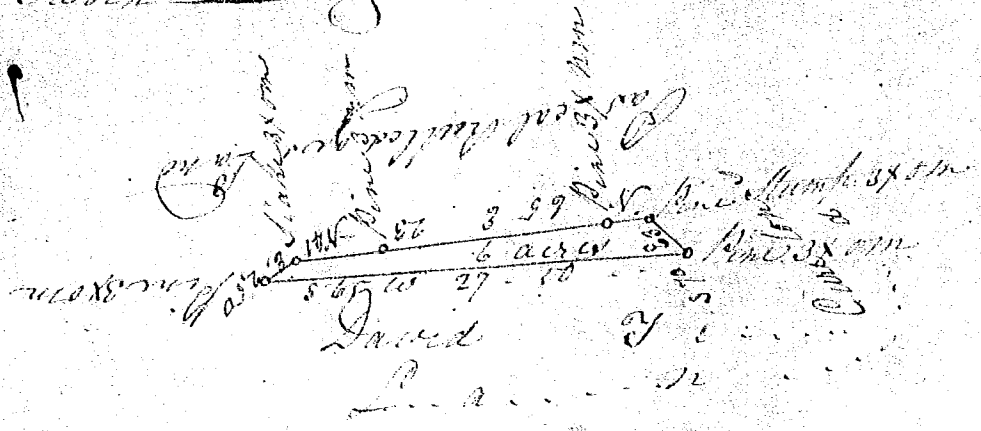


Chain bearing
 Laid down 10 Ch. to
 the Inch



South Carolina

Pursuant to a warrant from John Young Commissioner of Locations for the District of Greenville bearing date the 3rd day of June 1822. I have caused to be re-measured and laid out unto David & Curator a tract of six acres of land on the N. side of Ruddy River; Bounded by Paucal Rutledge's line running N. E. the other line by the said Curator S. and has such shape form and marks as the above Plat represents. Surveyed and Certified by me this 10th day of June 1822. B. Griffith D.

Recorded the 13th of July 1822

John Young C.