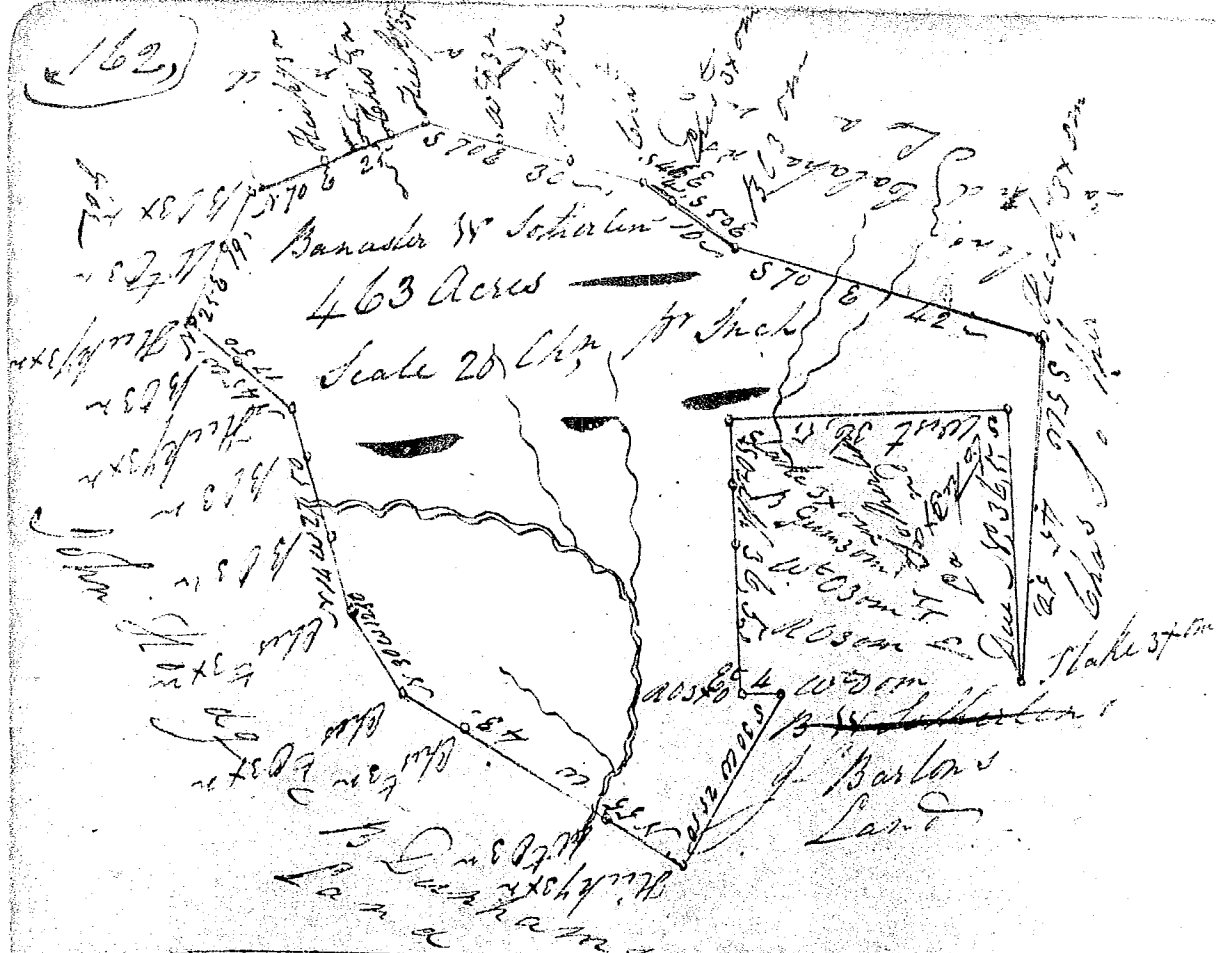


162



South Carolina

Pursuant to a warrant from John Young Esq Comr of Locations in the District of Greenville dated the 25th day of March 1833, I have admeasured and laid out unto Banister & Southern a tract of land containing four hundred and sixty three acres on waters of South Sugar River, bounded by lines running S 67 S 60 by Callahan an Elias Southwestern Lands, S W by Jefferson Barlow's land, N W by Co B Dunham's land and on lines running N W and N E by land surveyed for John Hodge including an old survey belonging B & Southern, and hath such marks, poles and boundaries as the above Plat represents. Surveyed the 30th day of March 1833, John C. Fort Ds, Recorded the 6th day of April 1833 by John Young Esq Comr handed to Mr Fort