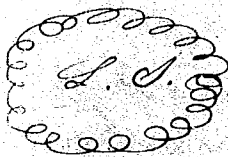


South Carolina } By Robt M. Hay, Ex. Off. Commis-
Greenville District } sioner of Locations for said District
To any Lawful Surveyor.

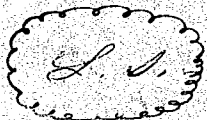
You are hereby required to admeasure and lay out unto George Howard a Tract of Land not exceeding Three Hundred Acres, observing the Surveyor General's Instructions in laying out the same, and return a Plat thereof certified by you into my office, within Two Months from the date hereof.



Given under my hand and seal of office,
this 2^d day of May A. D. 1840.
Robt M. Hay, c. c. f.
& Com. Loc. Ex. Off.

South Carolina } By Robt M. Hay, Ex. Off. Commissioner
Greenville District } of Locations for said District
To any Lawful Surveyor.

You are hereby required to admeasure and lay out unto Thomas P. Butler a Tract of Land not exceeding One Hundred Acres, observing the Surveyor General's Instructions in laying out the same, and return a Plat thereof certified by you into my office, within Two Months from the date hereof.



Given under my hand and seal of
Office, this 5th day of May A. D. 1840.
Robt M. Hay, c. c. f.
& Com. Loc. Ex. Off.