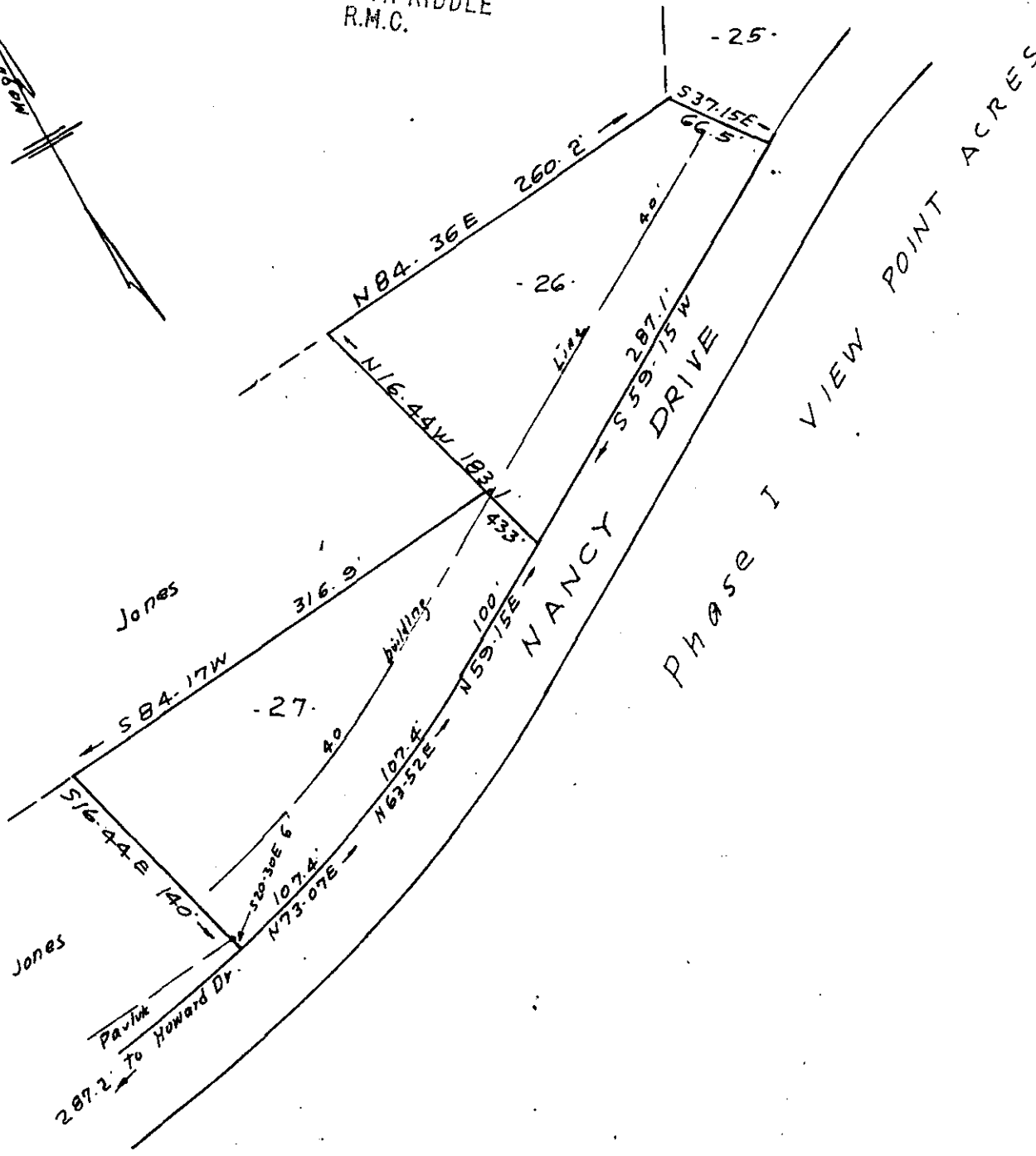
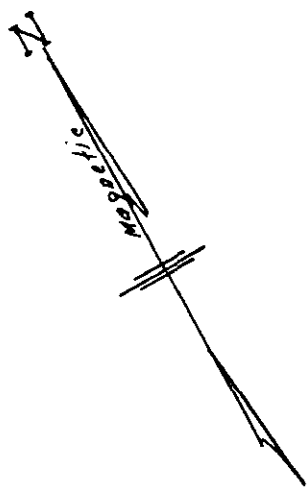


RECORDING FEE
PAID \$

FILED
GREENVILLE CO. S. C.
OCT 4 11 55 AM '72
ELIZABETH RIDDLE
R.M.C.



LOTS 26 & 27
ADDITION TO PHASE I
VIEW POINT ACRES

NEAR FOUNTAIN INN S. C.

SCALE 1" = 100' MAY 23, 1972

\$ 1.00.

HU-144

OCT 4 1972

10256

C.O. Riddle Reg. L.S. 1397 Greenville S.C.